



Evans, Mechwart, Hambleton & Tilton, Inc.
 Engineers • Surveyors • Planners • Scientists
 5500 New Albany Road, Columbus, OH 43054
 Phone: 614.775.4500 Fax: 614.775.4800

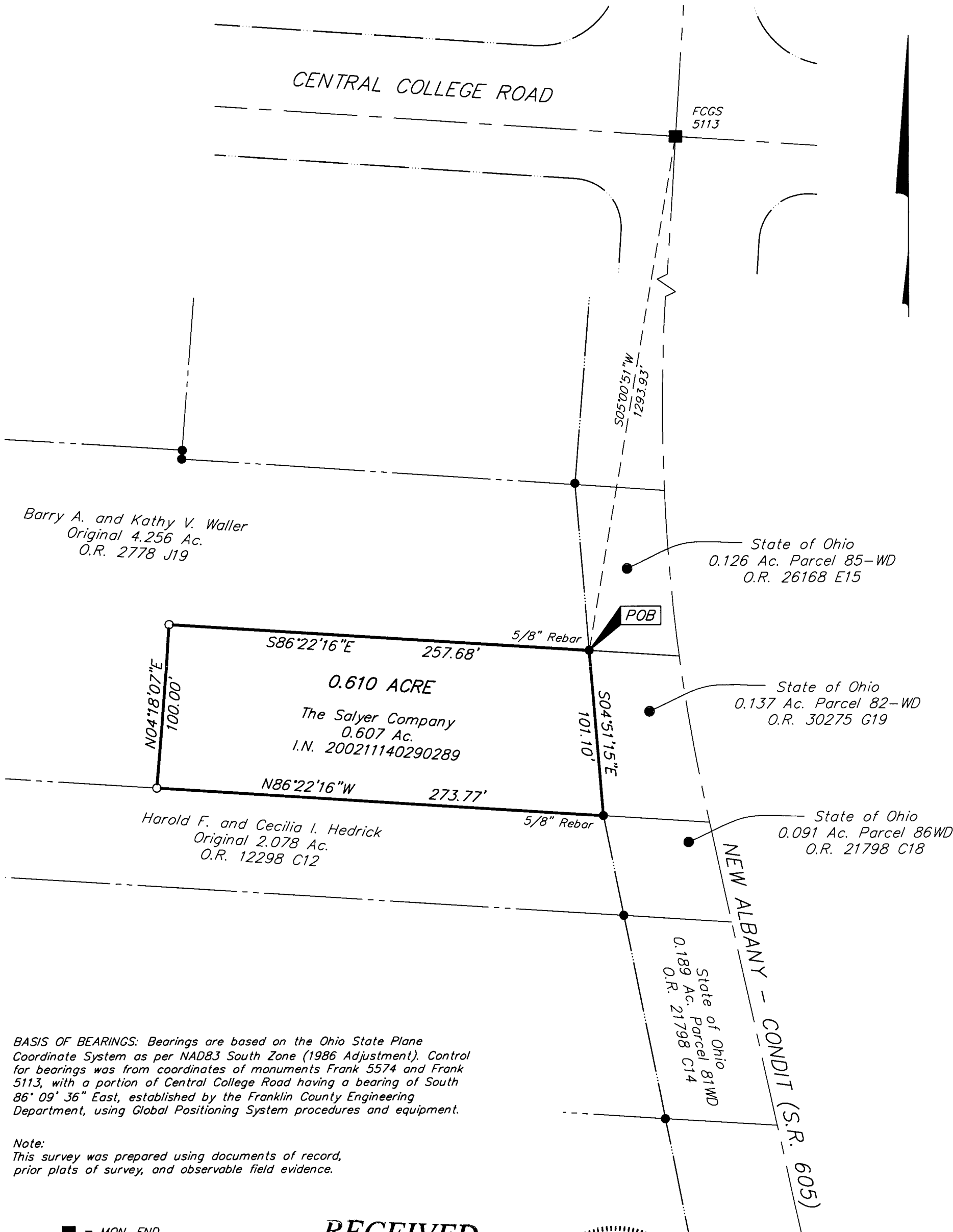
M C M X X V

SURVEY OF ACREAGE PARCEL
SECTION 13, TOWNSHIP 2, RANGE 16
UNITED STATES MILITARY LANDS
 PLAIN TOWNSHIP, FRANKLIN COUNTY, OHIO

Date: May 10, 2006

Scale: 1" = 60'

Job No: 2006-0918



BASIS OF BEARINGS: Bearings are based on the Ohio State Plane Coordinate System as per NAD83 South Zone (1986 Adjustment). Control for bearings was from coordinates of monuments Frank 5574 and Frank 5113, with a portion of Central College Road having a bearing of South 86° 09' 36" East, established by the Franklin County Engineering Department, using Global Positioning System procedures and equipment.

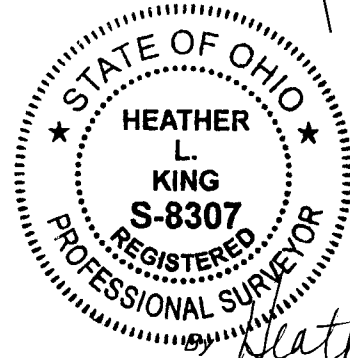
Note:
 This survey was prepared using documents of record, prior plats of survey, and observable field evidence.

- = MON. FND.
 - = I.P. FND.
 - = I.P. SET
 - = MAG. NAIL FND.
- I.P. Set are 13/16" I.D. iron pipe with cap inscribed EMHT INC

RECEIVED

MAY 11 2006

Franklin County Engineer
 Dean C. Ringle, P.E., P.S.



Heather L. King 5/10/06
 Professional Surveyor No. 8307



GRAPHIC SCALE
 (IN FEET)

\\CMHDATA1\SURVE\PROJECT\20060918\DWG\60918BV.DWG<11X17 PORTRAIT CANNON> - 1 XREF: 52299BV - LAST SAVED BY HKING [5/10/2006 7:46:08 PM] - PLOTTED BY HKING [5/10/2006 7:46:09 PM]