



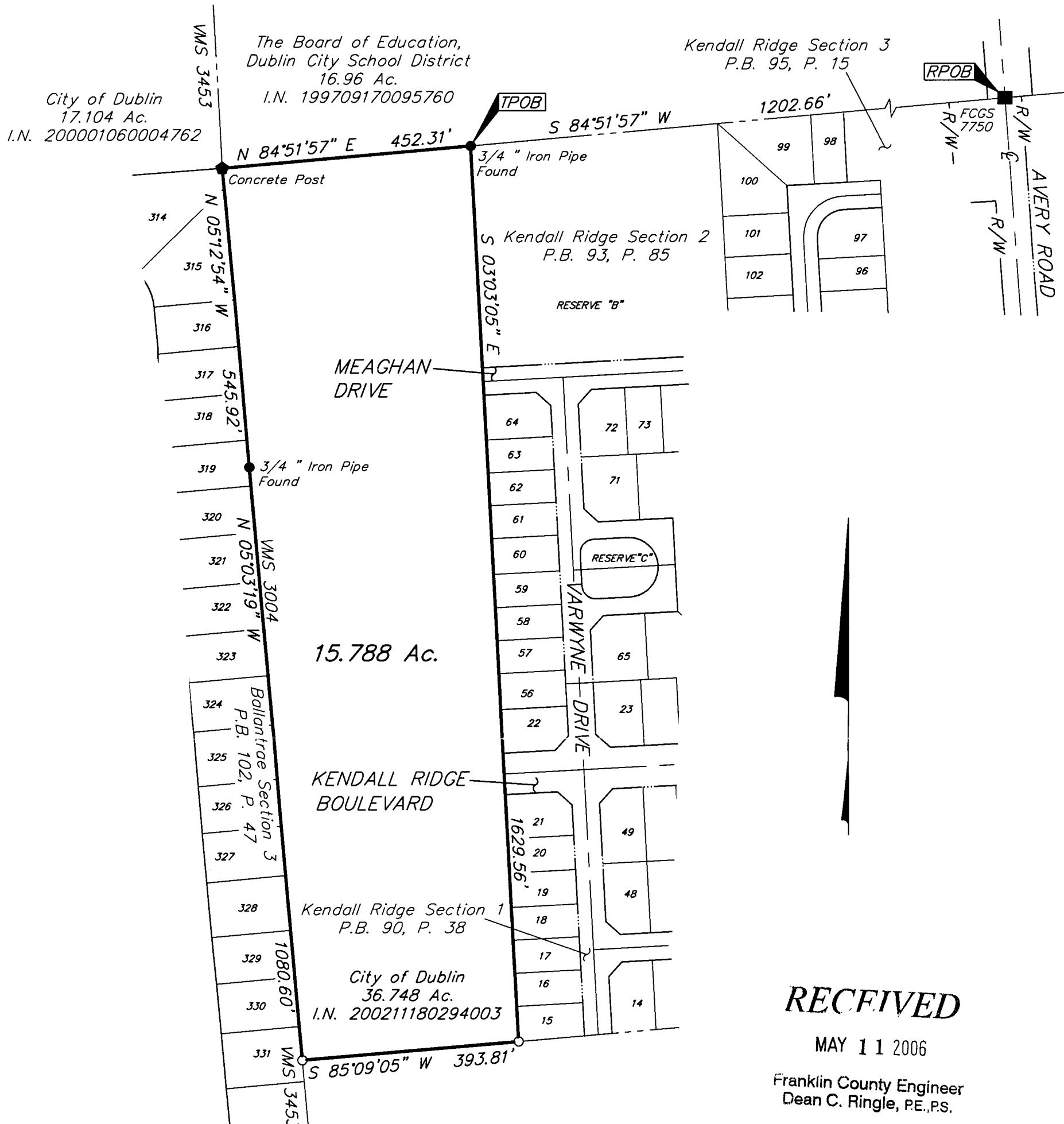
EVANS, MECHWART, HAMBLETON & TILTON, INC.
170 MILL STREET, GAHANNA, OHIO 43230
TELEPHONE (614) 471-5150 - FACSIMILE (614) 471-9286

SURVEY OF ACREAGE PARCEL
VIRGINIA MILITARY SURVEY No. 3004
CITY OF DUBLIN, FRANKLIN COUNTY, OHIO

Date: November 4, 2004

Scale: 1" = 200'

Job No: 2004-1981



RECEIVED
MAY 11 2006
Franklin County Engineer
Dean C. Ringle, PE., PS.

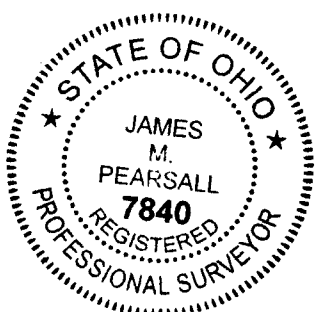
- = STONE FND.
- = MON. FND.
- = I.P. FND.
- = I.P. SET
- = MAG. NAIL FND.
- = MAG. NAIL SET
- ▲ = R.R. SPK. FND.
- △ = R.R. SPK. SET
- ◆ = POST FOUND

I.P. Set are 13/16" I.D. iron pipe with cap inscribed EMHT INC

BASIS OF BEARINGS: Bearings are based on the Ohio State Plane Coordinate System, NAD83. Control for bearings was derived from coordinates of monuments 7748 & 7749, as established by the Franklin County Engineering Department using Global Positioning System procedures and equipment, having a bearing between them of North 05° 17' 10" East.



GRAPHIC SCALE (IN FEET)



By James M. Pearsall 5/4/06
Professional Surveyor No. 7840

CMHDATA \SURVEY\PROJECT\20041981\DWG\141981BV.DWG - I XREF: 77857600 - PLOTTED BY: TWEBB - THURSDAY, NOV 4 2004 - 2:23:11 PM