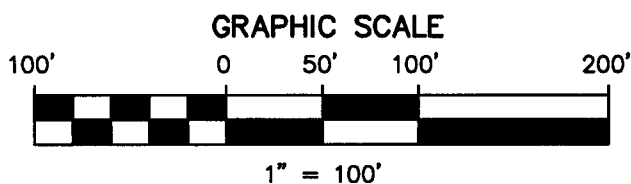
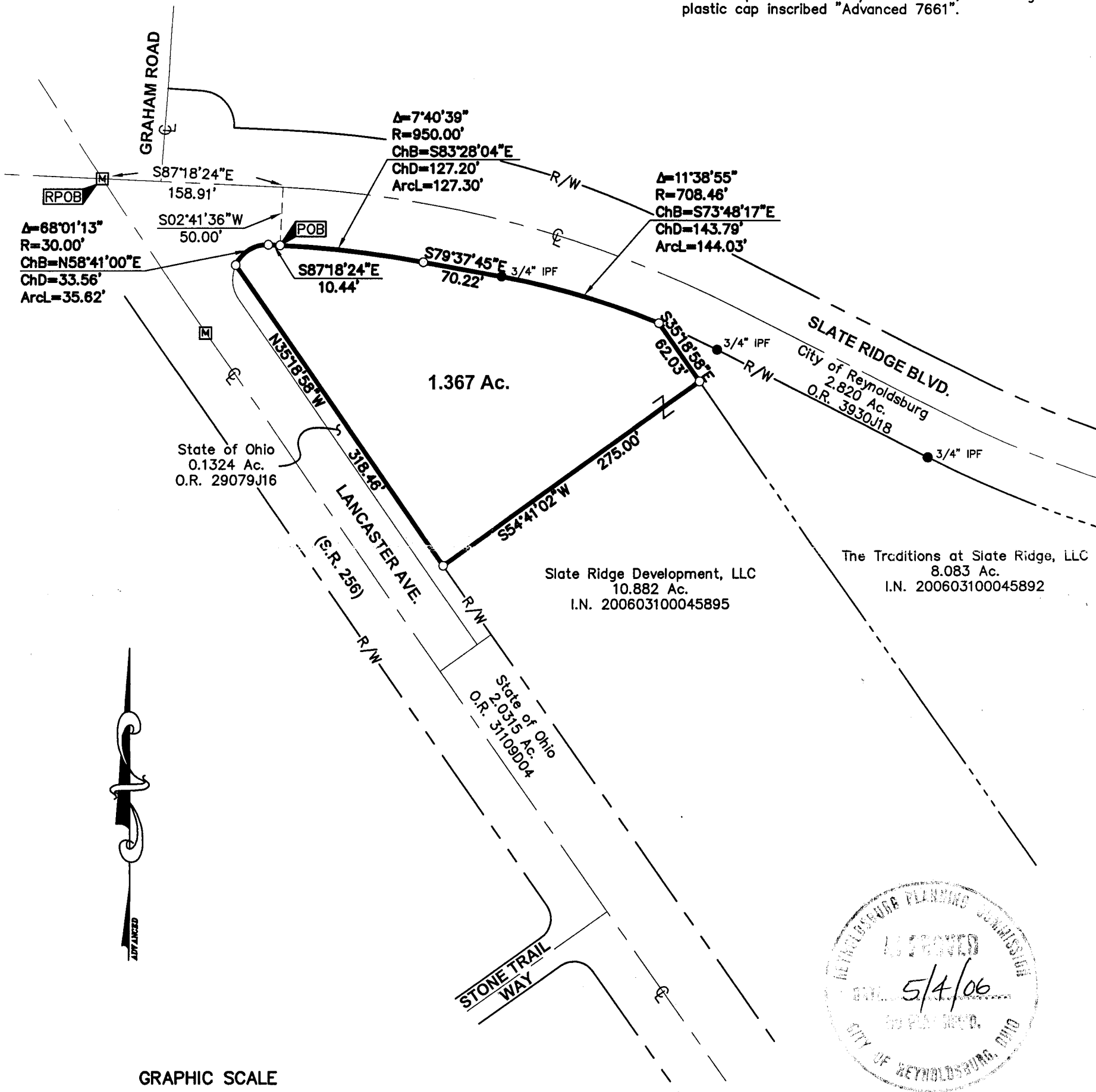


**SURVEY OF ACREAGE PARCEL
LOCATED IN SECTION 18, TOWNSHIP 16, RANGE 20
REFUGEE LANDS
CITY OF REYNOLDSBURG, FRANKLIN COUNTY, OHIO**

LEGEND

- Iron Pin Found ○ Iron Pin Set W / Cap
- ✕ PK Nail Found ✕ PK Nail Set
- ▲ RR Spike Found △ RR Spike Set
- ☒ Monument Box ☒ Monument

All iron pins set are 3/4" diameter, 30" long with plastic cap inscribed "Advanced 7661".



BASIS OF BEARINGS: The Bearings shown hereon were transferred from a GPS survey of Franklin County Monuments "LIVINGSTON" and "REYNOLDSBURG" performed by the Franklin County Engineer's Office, and is based upon the NAD83 Ohio State Plane Coordinate System, South Zone, 1986 adjustment and determines the bearing between said monuments as S 88° 26' 12" 5



DRAWN BY: *CEW* JOB NO.: 05-0001-172
 DATE: 04/04/06 CHECKED BY: *DRH*



422 Beecher Road
 Gahanna, Ohio 43230
 ph 614.428.7750
 fax 614.428.7755

ADVANCED CIVIL DESIGN, INC.

Clark E. White
 Clark E. White
 Professional Surveyor No. 7868

Date:

