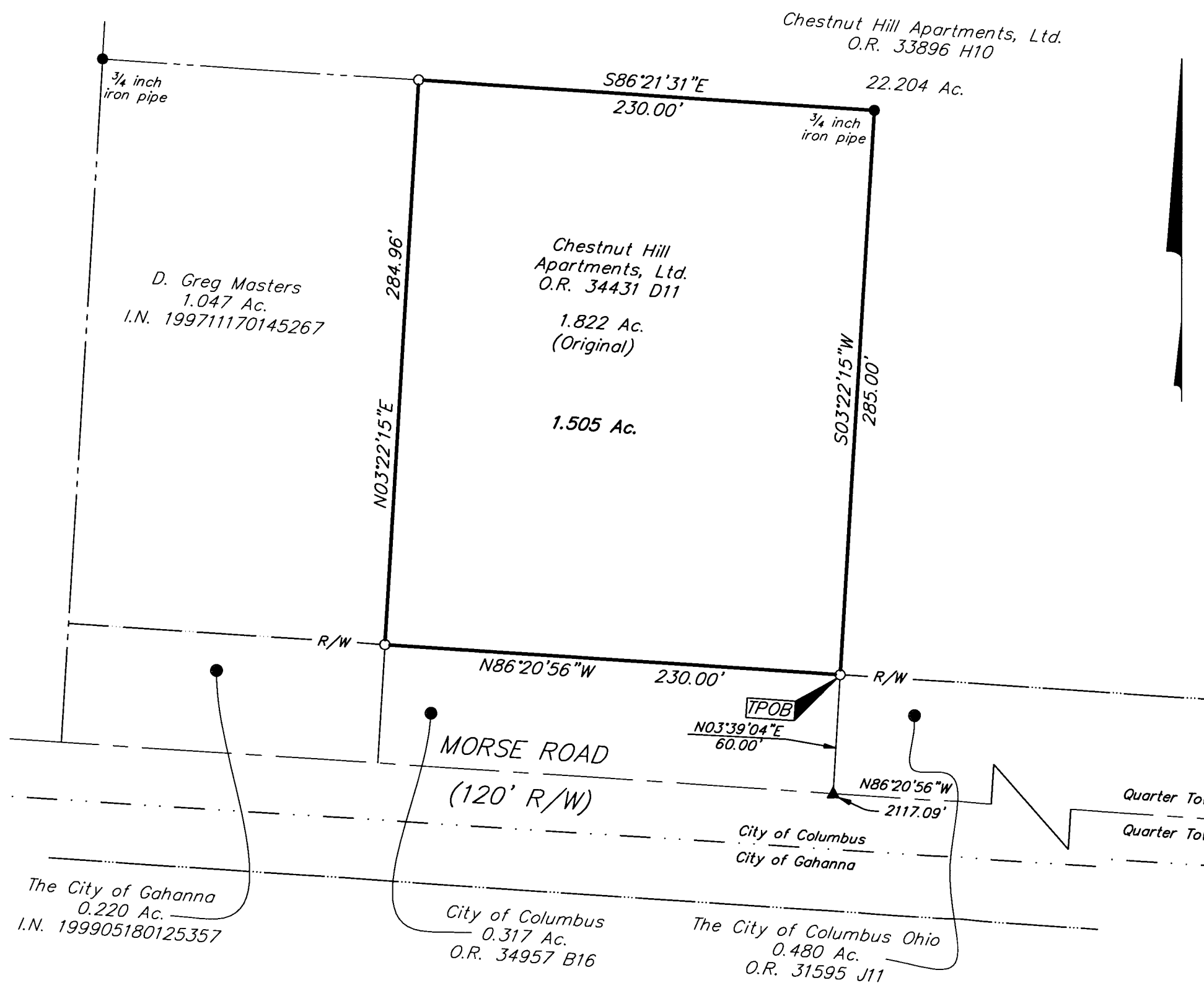


EMH&T
 Evans, Mechwart, Hambleton & Tilton, Inc.
 Engineers • Surveyors • Planners • Scientists
 5500 New Albany Road, Columbus, OH 43054
 Phone: 614.775.4500 Fax: 614.775.4800

SURVEY OF ACREAGE PARCEL
QUARTER TOWNSHIP 4, TOWNSHIP 2, RANGE 17
UNITED STATES MILITARY LANDS
CITY OF COLUMBUS, FRANKLIN COUNTY, OHIO

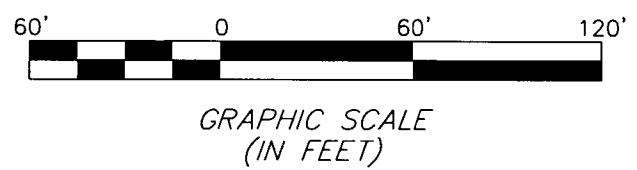
Date: April 18, 2006
 Scale: 1" = 60'
 Job No: 2006-0570

\\CMHDATA1\SURVEY\PROJECT\20060570\DWG\60570B\1.DWG-11X17 LAND CANNON - NO XREES - LAST SAVED BY JMC/FARLAND [4/21/2006 9:07:22 AM] - PLOTTED BY JMC/FARLAND [4/21/2006 9:07:24 AM]

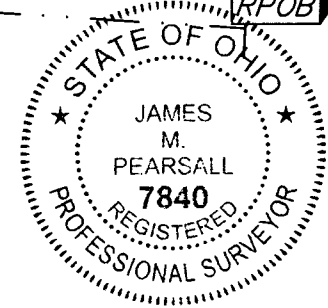


BASIS OF BEARINGS: Bearings are based on the Ohio State Plane Coordinate System, South Zone, as per NAD83 (1986 Adjustment). Control for bearings was from coordinates of monuments FRANK 69 & FRANK 169, having a bearing of North 86° 20' 56" West for the centerline of Morse Road, established by the Franklin County Engineering Department, using Global Positioning System procedures and equipment.

- = STONE FND.
 - = MON. FND.
 - = I.P. FND.
 - = I.P. SET
 - = MAG. NAIL FND.
 - = MAG. NAIL SET
 - ▲ = R.R. SPK. FND.
 - △ = R.R. SPK. SET
 - = P.K. NAIL FND.
- I.P. Set are 13/16" I.D. iron pipe with cap inscribed EMHT INC



RECEIVED
 APR 21 2006
 Franklin County Engineer
 Dean C. Ringle, RE.,P.S.



By *James M. Pearsall* 4/21/06
 Professional Surveyor No. 7840