



Evans, Mechwart, Hambleton & Tilton, Inc.
 Engineers • Surveyors • Planners • Scientists
 5500 New Albany Road, Columbus, OH 43054
 Phone: 614.775.4500 Fax: 614.775.4800

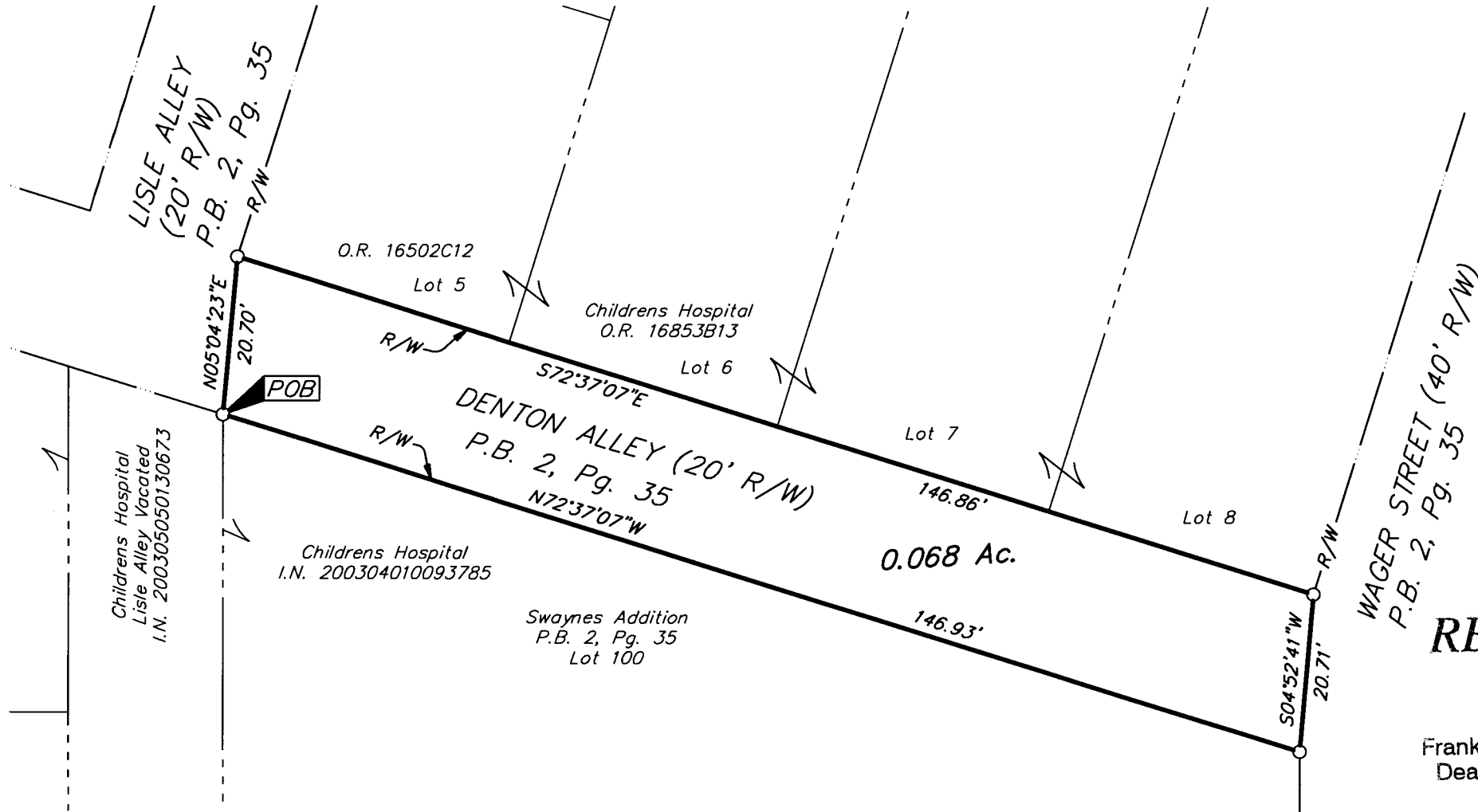
M C M X X V I

RIGHT-OF-WAY VACATION
SECTION 22, TOWNSHIP 5, RANGE 22
REFUGEE LANDS
 CITY OF COLUMBUS, FRANKLIN COUNTY, OHIO

Date: April 21, 2006

Scale: 1" = 20'

Job No: 2006-0528



- = STONE FND.
 - = MON. FND.
 - = I.P. FND.
 - = I.P. SET
 - = MAG. NAIL FND.
 - = MAG. NAIL SET
 - ▲ = R.R. SPK. FND.
 - △ = R.R. SPK. SET
 - ◆ = P.K. NAIL FND.
- I.P. Set are 13/16" I.D. iron pipe with cap inscribed EMHT INC



GRAPHIC SCALE
(IN FEET)

BASIS OF BEARINGS:
 Bearings are based on North 00° 00' 00" East for the centerline of Parsons Avenue as shown in the plat of "Swaynes Addition", a subdivision of record in Plat Book 2, Page 35.

RECEIVED

APR 24 2006

Franklin County Engineer
 Dean C. Ringle, P.E., P.S.



By *Heather L. King* 4/21/06
 Professional Surveyor No. 8307

I:\CADD\DATA\1\SURVEY\PROJECT\20060225B\DWG\60258B\DWG-LEGAL LANDS - NO XREFS - LAST SAVED BY THEBB [4/21/2006 2:54:06 PM] - PLOTTED BY THEBB [4/21/2006 2:54:06 PM]