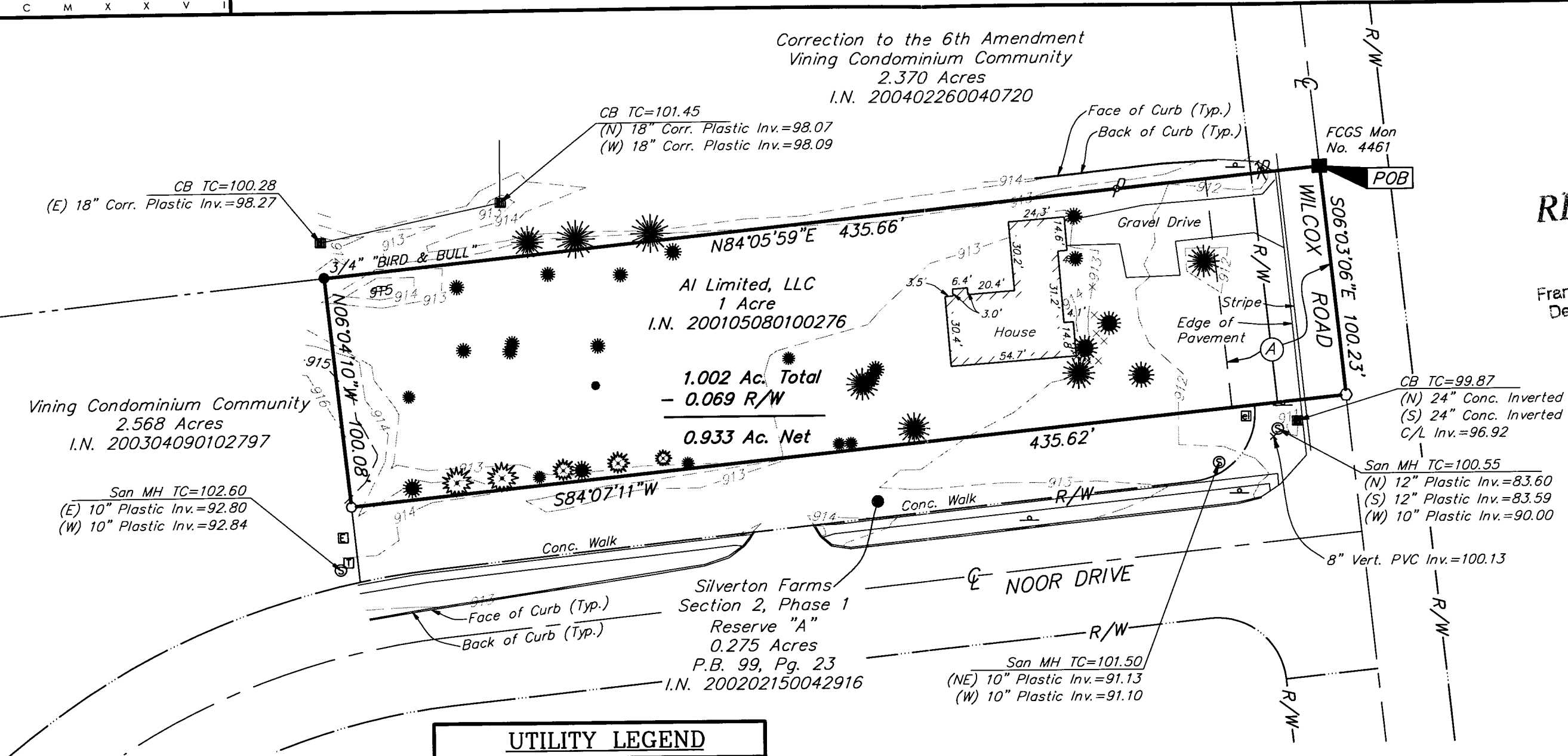


SURVEY OF ACREAGE PARCEL
VIRGINIA MILITARY SURVEY NO. 3012
CITY OF COLUMBUS, FRANKLIN COUNTY, OHIO

Date: March 27, 2006
 Scale: 1" = 50'
 Job No: 2006-0428

L:\CMHDATA\TAI\SURVEY\PROJECT\20060428\DWG\60428B\DWG-11X17 LAND CANNONS - NO XREFS - LAST SAVED BY HKING [3/27/2006 3:13:15 PM] - PLOTTED BY HKING [3/27/2006 3:13:16 PM]



RECEIVED
 MAR 28 2006
 Franklin County Engineer
 Dean C. Ringle, P.E., P.S.

UTILITY LEGEND	
	= Electric Pedestal
	= Utility Pole
	= Power Pole
	= Electric Transformer
	= Telephone Pedestal
	= Sign
	= Catch Basin
	= Sanitary Manhole
	= Centerline
	= Right of Way Line

BASIS OF BEARINGS:
 Bearings are based on the Ohio State Plane Coordinate System as per NAD83. Control for bearings was from coordinates of monuments 4461 and 5542, having a bearing of South 06° 03' 06" East for a portion of the centerline of Wilcox Road, established by the Franklin County Engineering Department, using Global Positioning System procedures and equipment.

(A) 50' Easement
 City of Columbus, Ohio
 I.N. 200005220100087



By *Heather L. King* 3/27/06
 Professional Surveyor No. 8307

