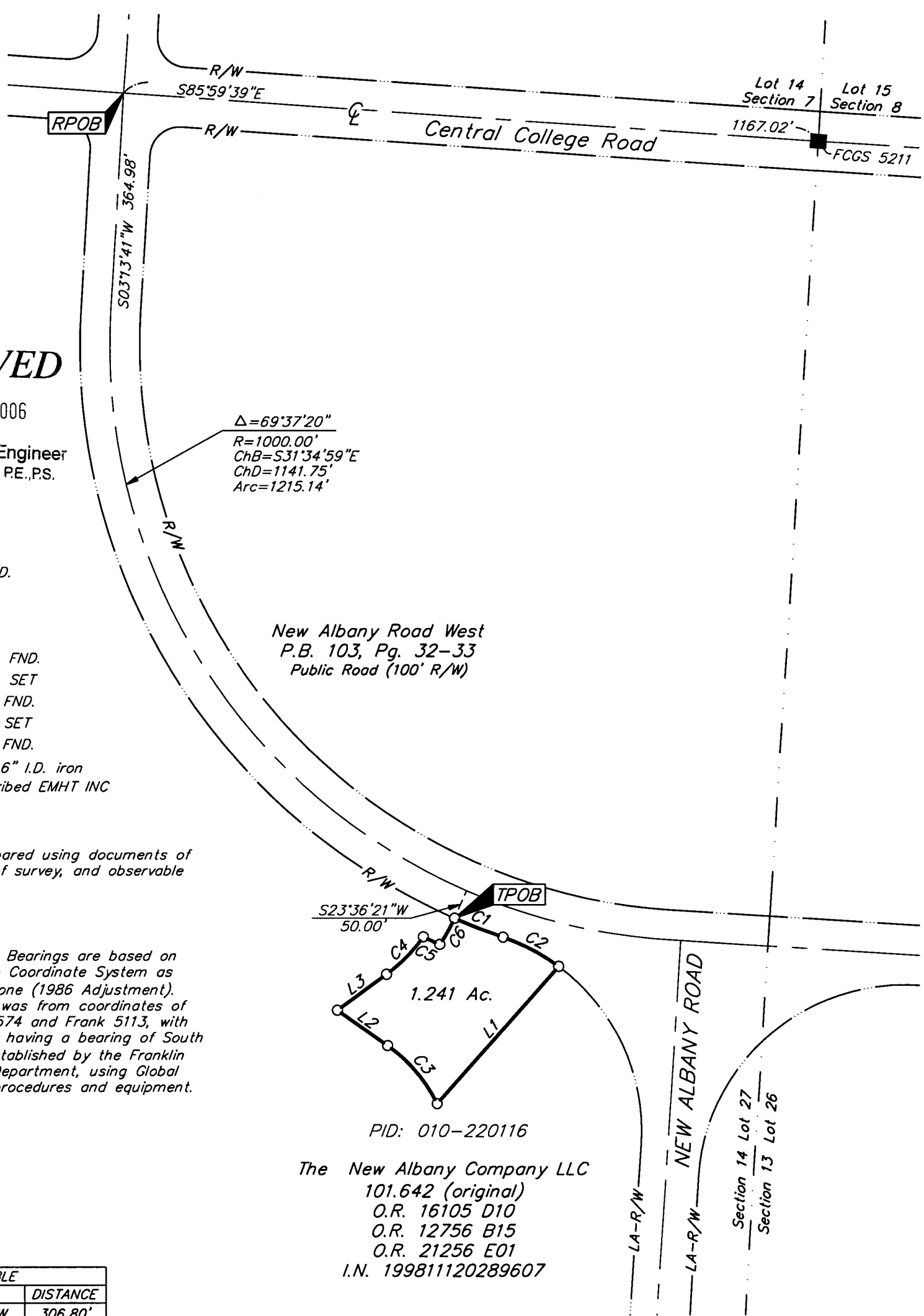


**SURVEY OF ACREAGE PARCEL**  
**SECTION 14, QUARTER TOWNSHIP 2,**  
**TOWNSHIP 2, RANGE 16**  
**UNITED STATES MILITARY LANDS**  
**CITY OF COLUMBUS, FRANKLIN COUNTY, OHIO**

Date: April 10, 2006  
 Scale: 1" = 200'  
 Job No: 2005-2313



**RECEIVED**

APR 12 2006

Franklin County Engineer  
 Dean C. Ringle, RE., P.S.

- = STONE FND.
- = MON. FND.
- = I.P. FND.
- = I.P. SET
- = MAG. NAIL FND.
- = MAG. NAIL SET
- ▲ = R.R. SPK. FND.
- △ = R.R. SPK. SET
- ◆ = P.K. NAIL FND.

I.P. Set are 13/16" I.D. iron pipe with cap inscribed EMHT INC

Note:  
 This survey was prepared using documents of record, prior plats of survey, and observable field evidence.

BASIS OF BEARINGS: Bearings are based on the Ohio State Plane Coordinate System as per NAD83, South Zone (1986 Adjustment). Control for bearings was from coordinates of monuments Frank 5574 and Frank 5113, with Central College Road having a bearing of South 86° 09' 36" East, established by the Franklin County Engineering Department, using Global Positioning System procedures and equipment.

LINE TABLE		
LINE	BEARING	DISTANCE
L1	S41°28'32"W	306.80'
L2	N54°43'41"W	103.01'
L3	N53°56'25"E	101.54'

CURVE TABLE					
CURVE	DELTA	RADIUS	ARC	CH BRG	CH
C1	04°45'56"	1050.00'	87.33'	S68°46'37"E	87.31'
C2	17°37'52"	342.70'	105.46'	S62°20'39"E	105.04'
C3	28°31'07"	260.00'	129.41'	N40°28'07"W	128.08'
C4	18°41'48"	270.00'	88.11'	N44°35'31"E	87.72'
C5	01°35'13"	1100.00'	30.47'	S65°20'16"E	30.47'
C6	09°36'25"	300.00'	50.30'	N29°22'18"E	50.24'



GRAPHIC SCALE  
 (IN FEET)



By *Heather L. King* 4/11/06  
 Professional Surveyor No. 8307

\\CMHDATA1\SURVEY\PROJECT\20052313\DWG\52313BV.DWG<11X17 PORTRAIT CANNON> - NO XREFS - LAST SAVED BY HKING [4/10/2006 5:07:03 PM] - PLOTTED BY HKING [4/10/2006 5:07:03 PM]