



Evans, Mechwart, Hambleton & Tilton, Inc.  
 Engineers • Surveyors • Planners • Scientists  
 5500 New Albany Road, Columbus, OH 43054  
 Phone: 614.775.4500 Fax: 614.775.4800

RECEIVED

MAR 21 2006

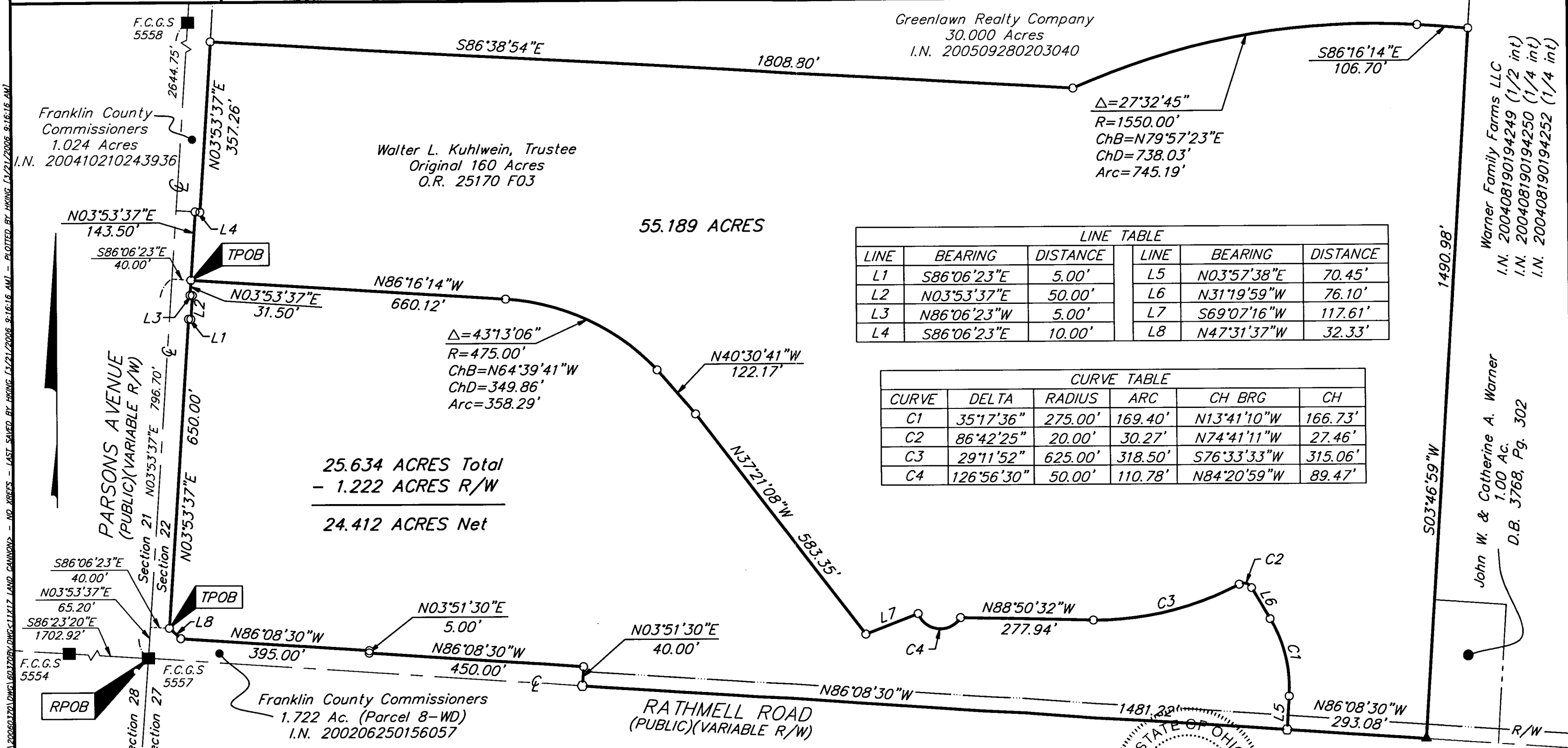
Franklin County Engineer  
 Dean C. Ringle, P.E., P.S.

**SURVEY OF ACREAGE PARCEL**  
**SECTION 22, TOWNSHIP 4, RANGE 22**  
**CONGRESS LANDS**  
 CITY OF OBETZ, FRANKLIN COUNTY, OHIO

Date: March 21, 2006

Scale: 1" = 200'

Job No: 2006-0370



LINE TABLE

LINE	BEARING	DISTANCE	LINE	BEARING	DISTANCE
L1	S86°06'23"E	5.00'	L5	N03°57'38"E	70.45'
L2	N03°53'37"E	50.00'	L6	N31°19'59"W	76.10'
L3	N86°06'23"W	5.00'	L7	S69°07'16"W	117.61'
L4	S86°06'23"E	10.00'	L8	N47°31'37"W	32.33'

CURVE TABLE

CURVE	DELTA	RADIUS	ARC	CH BRG	CH
C1	35°17'36"	275.00'	169.40'	N13°41'10"W	166.73'
C2	86°42'25"	20.00'	30.27'	N74°41'11"W	27.46'
C3	29°11'52"	625.00'	318.50'	S76°33'33"W	315.06'
C4	126°56'30"	50.00'	110.78'	N84°20'59"W	89.47'

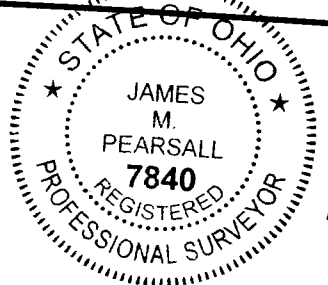
I:\C:\DATA\PROJECTS\20060320\DWG\60370B.DWG - 1117 LAND PARCEL - NO XREFS - LAST SAVED BY HKING 03/21/2006 9:16:16 AM - PLOTTED BY HKING 03/21/2006 9:16:16 AM

- = MAG. NAIL SET
  - ▲ = R.R. SPK. FND.
  - = MON. FND.
  - = I.P. SET
- I.P. Set are 13/16" I.D. iron pipe with cap inscribed EMHT INC



GRAPHIC SCALE (IN FEET)

**BASIS OF BEARINGS:** Bearings are based on the Ohio State Plane Coordinate System as per NAD83, South Zone (1986 Adjustment). Control for bearings was from coordinates of monuments F.C.G.S. 5556 & F.C.G.S. 9980, having a bearing of North 03° 53' 37" East for a portion of the centerline of Parsons Avenue, established by the Franklin County Engineering Department, using Global Positioning System procedures and equipment.



By *James M. Pearsall* 3/21/06  
 Professional Surveyor No. 7840