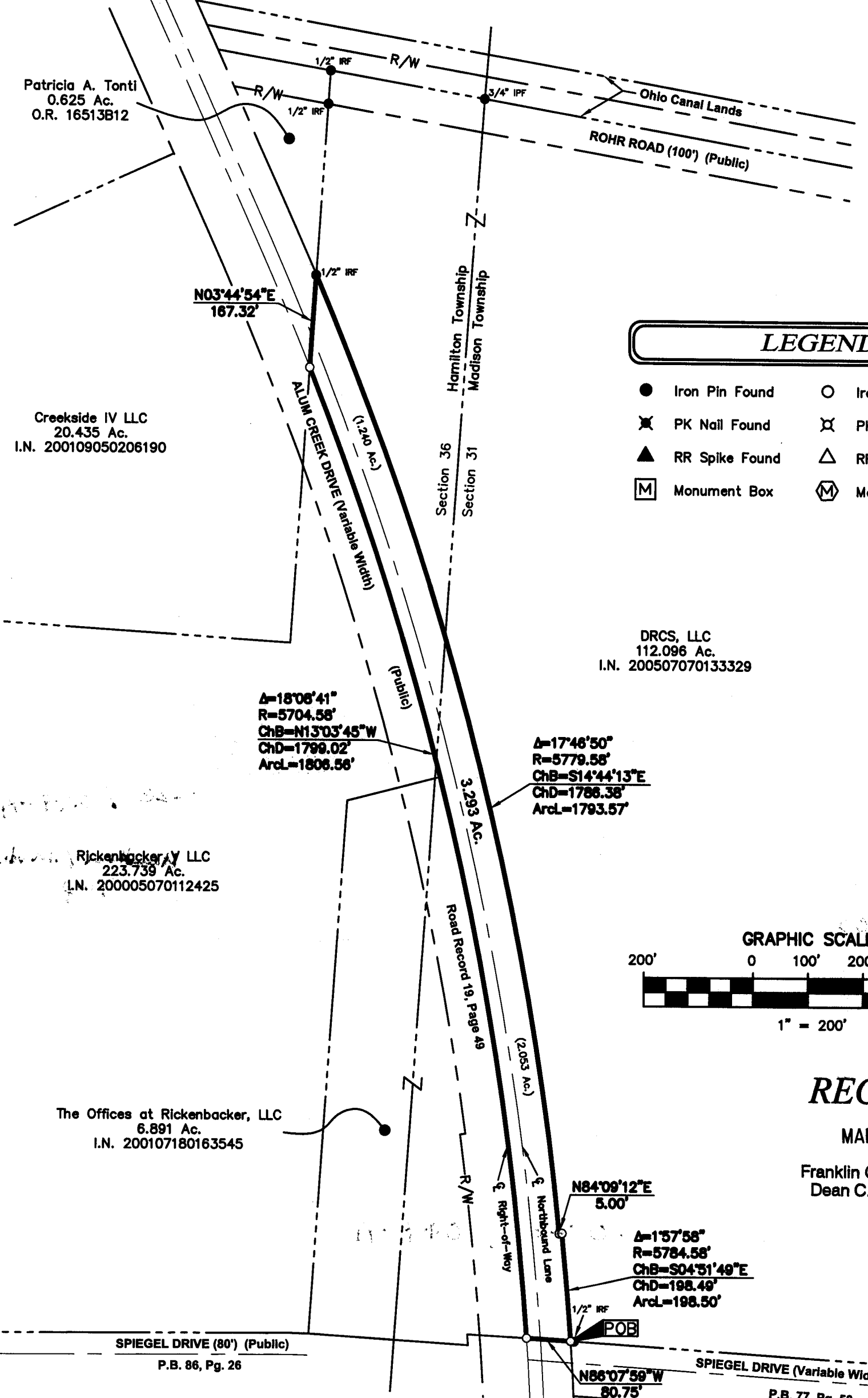


SURVEY OF ACREAGE PARCEL

LOCATED IN SECTION 31, TOWNSHIP 11, RANGE 21 &
SECTION 36, TOWNSHIP 4, RANGE 22
CONGRESS LANDS

HAMILTON AND MADISON TOWNSHIPS, FRANKLIN COUNTY, OHIO



Patricia A. Tonti
0.625 Ac.
O.R. 16513B12

Creekside IV LLC
20.435 Ac.
I.N. 200109050206190

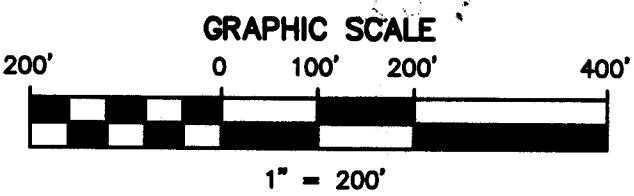
Rickenbacker, LLC
223.739 Ac.
I.N. 200005070112425

The Offices at Rickenbacker, LLC
6.891 Ac.
I.N. 200107180163545

DRCS, LLC
112.096 Ac.
I.N. 200507070133329

LEGEND

- | | |
|------------------|------------------------|
| ● Iron Pin Found | ○ Iron Pin Set W / Cap |
| ✕ PK Nail Found | ✕ PK Nail Set |
| ▲ RR Spike Found | △ RR Spike Set |
| Ⓜ Monument Box | Ⓜ Monument |

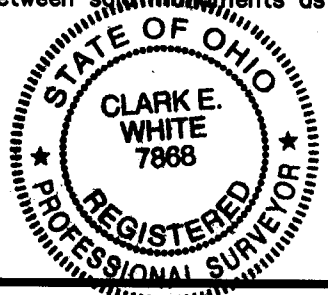


RECEIVED

MAR 07 2006

Franklin County Engineer
Dean C. Ringle, P.E., P.S.

The Basis of Bearings shown hereon was transferred from a GPS survey of Franklin County Monuments "FCGS 1661" and "FCGS 9927" performed by the Franklin County Engineer's Office, and is based upon the NAD83 Ohio State Plane Coordinate System, South Zone, 1986 adjustment, and determines the bearing between said monuments as S 03° 55' 36" W.



Clark E. White 3/7/06
Clark E. White
Professional Surveyor No. 7868
Date:

DRAWN BY: <i>CEW</i>	JOB NO.: 04-0011-08
DATE: 03/07/06	CHECKED BY: DRH

ADVANCED
CIVIL DESIGN

4605 Morse Road
Suite 101
Columbus, Ohio 43230
ph 614.428.7750
fax 614.428.7755

Z:\04-0011-08\dwg\0011-08AlumCreekDrop.dwg Layout1 Mar 07, 2006 - 1:57:05pm cwhite