

LOT SPLIT FOR DUKE REALTY OHIO

A 6.305 ACRE TRACT OUT OF
AN ORIGINAL 197.551 ACRE TRACT
DEEDED TO TRUEMAN LIMITED PARTNERSHIP
IN OFFICIAL RECORD 32808, PAGE A03

CITY OF HILLIARD
COUNTY OF FRANKLIN
STATE OF OHIO

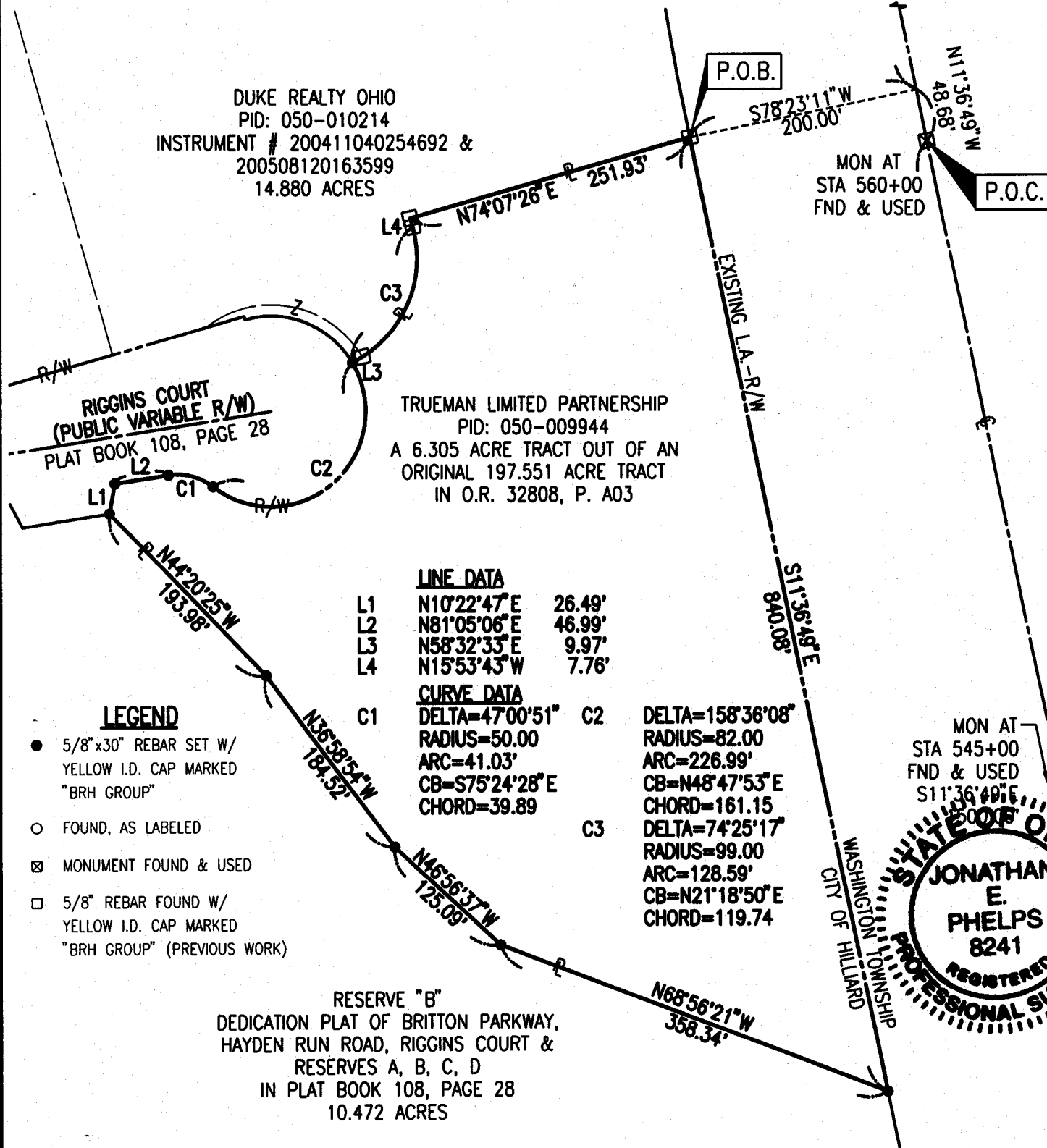
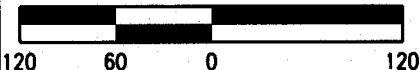
RECEIVED

FEB 28 2006

Franklin County Engineer
Dean C. Ringle, P.E., P.S.

BASIS OF BEARING IS THE
CENTERLINE OF INTERSTATE 270
FROM ODOT RIGHT-OF-WAY PLANS
IN FRA-270-3.47N

SCALE: 1" = 120'



DUKE REALTY OHIO
PID: 050-010214
INSTRUMENT # 200411040254692 &
200508120163599
14.880 ACRES

TRUEMAN LIMITED PARTNERSHIP
PID: 050-009944
A 6.305 ACRE TRACT OUT OF AN
ORIGINAL 197.551 ACRE TRACT
IN O.R. 32808, P. A03

LINE DATA

L1	N10°22'47"E	26.49'
L2	N81°05'06"E	46.99'
L3	N58°32'33"E	9.97'
L4	N15°53'43"W	7.76'

CURVE DATA

C1	DELTA=47°00'51"	C2	DELTA=158°36'08"
	RADIUS=50.00		RADIUS=82.00
	ARC=41.03'		ARC=226.99'
	CB=S75°24'28"E		CB=N48°47'53"E
	CHORD=39.89		CHORD=161.15
		C3	DELTA=74°25'17"
			RADIUS=99.00
			ARC=128.59'
			CB=N21°18'50"E
			CHORD=119.74

LEGEND

- 5/8" x 30" REBAR SET W/
YELLOW I.D. CAP MARKED
"BRH GROUP"
- FOUND, AS LABELED
- ⊗ MONUMENT FOUND & USED
- 5/8" REBAR FOUND W/
YELLOW I.D. CAP MARKED
"BRH GROUP" (PREVIOUS WORK)

RESERVE "B"
DEDICATION PLAT OF BRITTON PARKWAY,
HAYDEN RUN ROAD, RIGGINS COURT &
RESERVES A, B, C, D
IN PLAT BOOK 108, PAGE 28
10.472 ACRES

THIS PLAT WAS PREPARED BY BRH GROUP INC., AND IS A TRUE
AND ACCURATE REPRESENTATION, TO THE BEST OF MY KNOWLEDGE
AND BELIEF, OF A SURVEY MADE BY SAME IN JULY AND AUGUST
2004, OCTOBER 2005, AND FEBRUARY 2006.

2/24/06

SHEET

BRH Group, Inc.

705-F Lakeview Plaza Boulevard
Worthington, Ohio 43085-4779
Phone: (614) 841-9500
Fax: (614) 841-0170

JOB NO.
20147

JONATHAN E. PHELPS, P.S. No. 8241

DATE

Jonathan E. Phelps 2/24/06

1

OF

1

