



ENGINEERS, SURVEYORS, PLANNERS, SCIENTISTS

EVANS, MECHWART, HAMBLETON & TILTON, INC.  
170 MILL STREET, GAHANNA, OHIO 43230  
TELEPHONE (614) 471-5150 - FACSIMILE (614) 471-9286

# SURVEY OF ACREAGE PARCEL

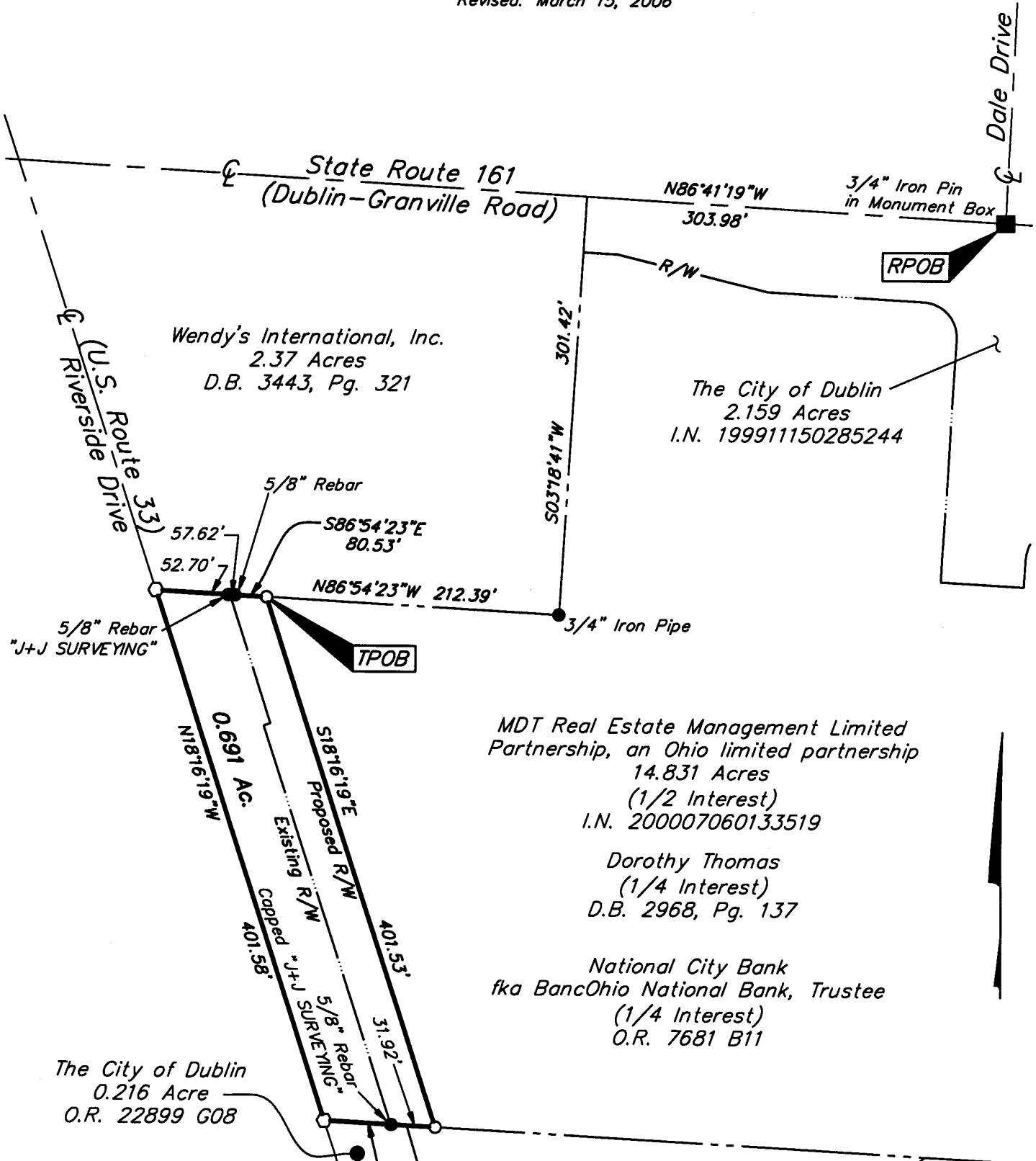
QUARTER TOWNSHIP 3, TOWNSHIP 2, RANGE 19  
UNITED STATES MILITARY LANDS  
CITY OF DUBLIN, FRANKLIN COUNTY, OHIO

Date: April 15, 2005

Job No. 2004-1983

Scale: 1" = 100'

Revised: March 15, 2006



- = MON. FND.
- = I.P. FND.
- = I.P. SET
- = MAG. NAIL SET

I.P. Set are 13/16" I.D. iron pipe with cap inscribed EMHT INC

**BASIS OF BEARINGS:**  
Bearings are based on the centerline bearing for State Route 161, South 86°41'19" East as delineated in the ODOT Plans Fra-161-4.77 for State Route 161 dated December 11, 1998.



GRAPHIC SCALE (IN FEET)

**RECEIVED**  
MAY 16 2006  
Survey Engineer  
James M. Pearsall, P.E., P.S.

I hereby certify that this plat was prepared from a field survey made under my supervision.  
**JAMES M. PEARSALL**  
7840  
REGISTERED PROFESSIONAL SURVEYOR  
Professional Surveyor No. 7840

\\CMHDATA\1\SURVEY\PROJECT\20041983\DWG\41983BV.DWG<LEGAL PORTRAIT> - NO XREFS - LAST SAVED BY HKING [3/15/2006 3:04:27 PM] - PLOTTED BY HKING [3/15/2006 3:04:27 PM]