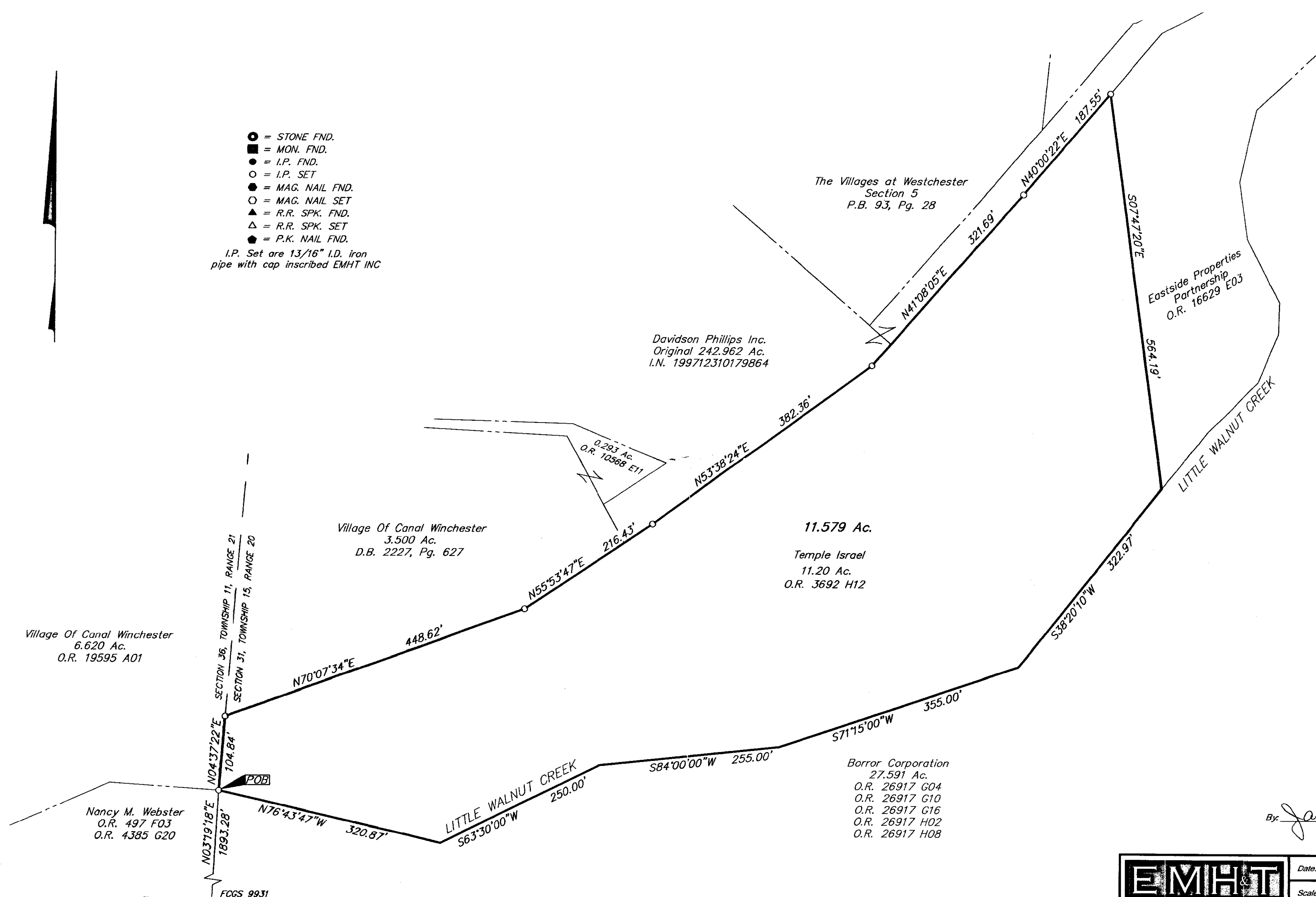


SURVEY OF ACREAGE PARCEL
SECTION 31, TOWNSHIP 15, RANGE 20
CONGRESS LANDS
VILLAGE OF CANAL WINCHESTER, FRANKLIN COUNTY, OHIO

- = STONE FND.
 - = MON. FND.
 - = I.P. FND.
 - = I.P. SET
 - = MAG. NAIL FND.
 - = MAG. NAIL SET
 - ▲ = R.R. SPK. FND.
 - △ = R.R. SPK. SET
 - = P.K. NAIL FND.
- I.P. Set are 13/16" I.D. iron pipe with cap inscribed EMHT INC

RECEIVED
 JAN 06 2006
 Franklin County Engineer
 Don C. Ring, P.E.



Village Of Canal Winchester
 6.620 Ac.
 O.R. 19595 A01

Village Of Canal Winchester
 3.500 Ac.
 D.B. 2227, Pg. 627

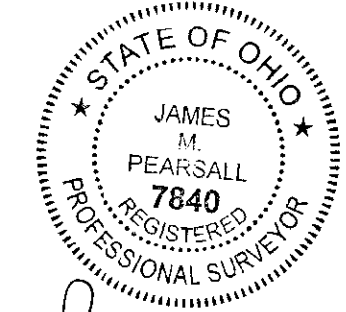
Davidson Phillips Inc.
 Original 242.962 Ac.
 I.N. 199712310179864

The Villages at Westchester
 Section 5
 P.B. 93, Pg. 28

Eastside Properties
 Partnership
 O.R. 16629 E03

11.579 Ac.
 Temple Israel
 11.20 Ac.
 O.R. 3692 H12

Borrer Corporation
 27.591 Ac.
 O.R. 26917 G04
 O.R. 26917 G10
 O.R. 26917 G16
 O.R. 26917 H02
 O.R. 26917 H08



By: *James M. Pearsall* 1/5/06
 Professional Surveyor No. 7840



GRAPHIC SCALE
 (IN FEET)

BASIS OF BEARINGS:
 The Bearings shown are based on The Ohio State Plane
 Coordinate System—South Zone, per NAD83 (1986 adjustment).
 Control for bearings was from coordinates of Monument Nos.
 9925 and 9931 established by the Franklin County Engineering
 Department, using Global Positioning System procedures and
 equipment.

EMHT		Date: January 5, 2006
Evans, Mechwart, Hambleton & Tilton, Inc. Engineers • Surveyors • Planners • Scientists 5500 New Albany Road, Columbus, OH 43054 Phone: 614.775.4800 Fax: 614.775.4800		Scale: 1" = 100'
M C M X X V I		Job No: 2005-2633
		Sheet: 1 of 1
REVISIONS		
MARK	DATE	DESCRIPTION

I:\CADD\DATA1\SURVEY\PROJECT\20052633\DWG\52633BV.DWG-18x24 LANDSCAPE - NO XREFS - LAST SAVED BY THEBB [1/5/2006 12:58:05 PM] - PLOTTED BY THEBB [1/5/2006 12:58:07 PM]