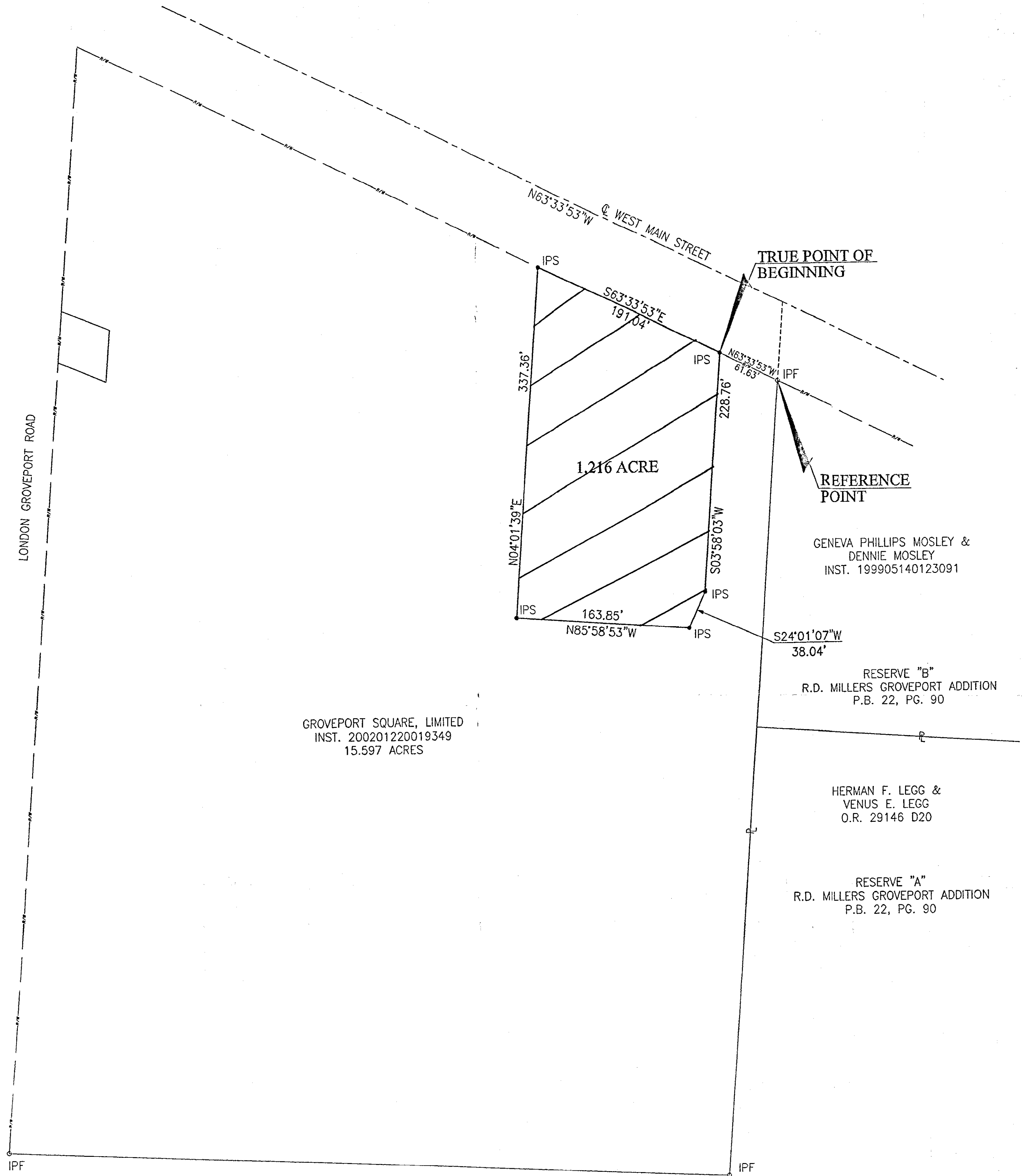


LEGEND  
 ○ IPF  
 ● IPS



GROVEPORT SQUARE, LIMITED  
 INST. 200201220019349  
 15.597 ACRES

GENEVA PHILLIPS MOSLEY &  
 DENNIE MOSLEY  
 INST. 199905140123091

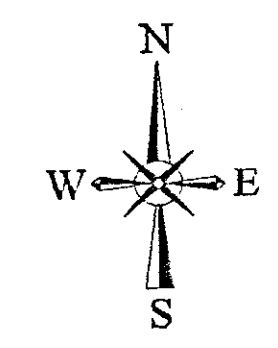
RESERVE "B"  
 R.D. MILLERS GROVEPORT ADDITION  
 P.B. 22, PG. 90

HERMAN F. LEGG &  
 VENUS E. LEGG  
 O.R. 29146 D20

RESERVE "A"  
 R.D. MILLERS GROVEPORT ADDITION  
 P.B. 22, PG. 90

RECEIVED  
 FEB 24 2006  
 Franklin County Engineer  
 Dean C. Ringle, P.E., P.S.

BEARINGS SHOWN HEREON ARE BASED ON THE BEARING OF  
 N63°33'53"W FOR THE CENTERLINE OF WEST MAIN STREET.  
 ALL IRON PINS SET ARE 5/8 INCH REBAR, 30 INCHES LONG WITH  
 A YELLOW CAP STAMPED "ADR".



DRAWN	RJS	CHECKED	RJS
CALCULATED	RJS	CHECKED	RJS

BOUNDARY SURVEY

CASTO DEVELOPMENT

*Robert J. Zands* 9/10/03  
 ROBERT J. ZANDS, P.S.  
 REGISTERED SURVEYOR #S-8053  
 STATE OF OHIO  
 ROBERT J. ZANDS  
 S-8053  
 REGISTERED  
 PROFESSIONAL SURVEYOR

BOUNDARY SURVEY OF  
 1.216 ACRE  
 SECTION 29, TOWNSHIP 11, RANGE 21  
 CONGRESS LANDS  
 VILLAGE OF GROVEPORT,  
 MADISON TOWNSHIP  
 FRANKLIN COUNTY, OHIO

1  
 1