

EMHT

Evans, Mechwart, Hambleton & Tilton, Inc.
 Engineers • Surveyors • Planners • Scientists
 5500 New Albany Road, Columbus, OH 43054
 Phone: 614.775.4500 Fax: 614.775.4800

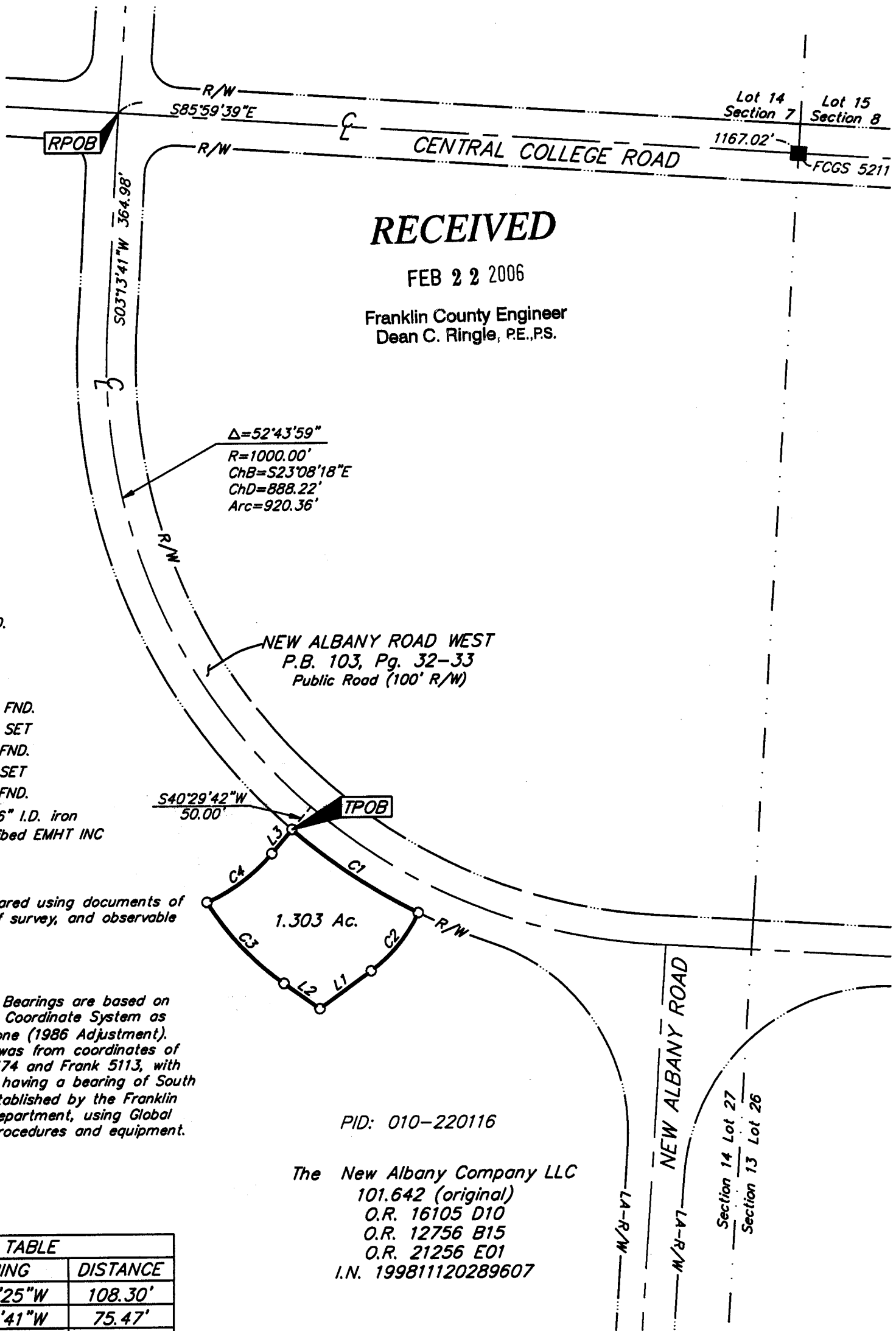
SURVEY OF ACREAGE PARCEL SECTION 14, QUARTER TOWNSHIP 2, TOWNSHIP 2, RANGE 16 UNITED STATES MILITARY LANDS CITY OF COLUMBUS, FRANKLIN COUNTY, OHIO

Date: February 21, 2006

Scale: 1" = 200'

Job No: 2005-0191

M C M X X V I



- = STONE FND.
 - = MON. FND.
 - = I.P. FND.
 - = I.P. SET
 - = MAG. NAIL FND.
 - = MAG. NAIL SET
 - ▲ = R.R. SPK. FND.
 - △ = R.R. SPK. SET
 - ◆ = P.K. NAIL FND.
- I.P. Set are 13/16" I.D. iron pipe with cap inscribed EMHT INC

Note:
 This survey was prepared using documents of record, prior plats of survey, and observable field evidence.

BASIS OF BEARINGS: Bearings are based on the Ohio State Plane Coordinate System as per NAD83, South Zone (1986 Adjustment). Control for bearings was from coordinates of monuments Frank 5574 and Frank 5113, with Central College Road having a bearing of South 86° 09' 36" East, established by the Franklin County Engineering Department, using Global Positioning System procedures and equipment.

PID: 010-220116
 The New Albany Company LLC
 101.642 (original)
 O.R. 16105 D10
 O.R. 12756 B15
 O.R. 21256 E01
 I.N. 199811120289607

LINE	BEARING	DISTANCE
L1	S53°56'25"W	108.30'
L2	N54°43'41"W	75.47'
L3	N40°29'42"E	53.03'

CURVE	DELTA	RADIUS	ARC	CH BRG	CH
C1	14°09'38"	1050.00'	259.51'	S56°35'07"E	258.85'
C2	29°27'14"	250.00'	128.52'	S39°12'53"W	127.11'
C3	22°10'35"	500.00'	193.53'	N43°38'24"W	192.32'
C4	26°40'36"	300.00'	139.68'	N53°50'00"E	138.42'



Heather L. King 2/21/06
 Professional Surveyor No. 8307

I:\CNHDATA1\SURVEY\PROJECT\20050191\DWG\50191BV.DWG<11X17 PORTRAIT CANNON> - NO XREFS - LAST SAVED BY HKING [2/21/2006 3:13:09 PM] - PLOTTED BY HKING [2/21/2006 3:13:09 PM]