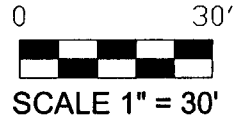
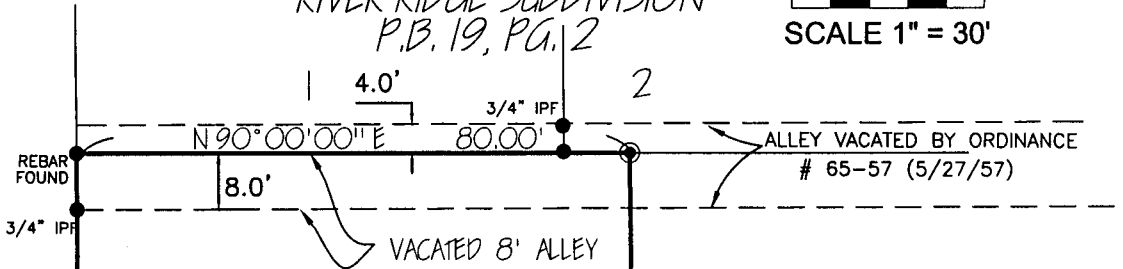


PLAT OF LOT SPLIT

LOT 186, EAST CLEFT ON THE SCIOTO, P.B. 11, PG. 1
CITY OF UPPER ARLINGTON, FRANKLIN COUNTY, OHIO



RIVER RIDGE SUBDIVISION
P.B. 19, PG. 2



258.40'

123.20'

0.226 ACRES

186

REBECCA L. KENTOSH
I.N. 200006090114365
P. # 070-005622



RECEIVED

JAN 26 2006

Franklin County Engineer
Dean C. Ringle, P.E., P.S.

187

TRUE PLACE OF BEGINNING for 0.226 Ac.

KIOKA ROAD (60')

N 00° 09' 08" W

S 90° 00' 00" W
80.00'

Approved by the Director of Development
Upper Arlington, Ohio, on 1-24-06 for
attachment to a lot of record. No plat required.

Director of Development Date

0.212 ACRES

10' x 6'
STORM EASEMENT
D.B. 3232, PG. 387

115.20'

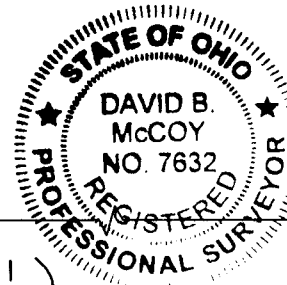
115.41'

40' BUILDING LINE
D.B. 578, PG. 153

TRUE PLACE OF BEGINNING for 0.212 Ac.
Reference Place of COMMENCEMENT for 0.226 Ac.

N 90° 00' 00" W
80.00'

WICKLIFFE ROAD (60')



LEGEND:

- = IRON PIN FOUND
- ⊙ = 3/4" IRON PIN W/ CAP SET

Bearings are based on N90°00'00"W, assumed, as there are no bearings on "EAST CLEFT ON THE SCIOTO" subdivision, of record in P.B. 11, Page 1, Recorder's Office, Franklin County, Ohio.

5750 Chandler Court
Westerville, OH 43082
E-Mail: hoyssinc@aol.com
Phone (614) 895-1922
Survey Fax (614) 895-1949
Construction Fax (614) 895-9549



We hereby certify that the above plat was prepared from an actual field survey and to the best of our knowledge and belief is correct. All dimensions along arcs are chord distances.

HOY SURVEYING SERVICES, INC.

David B. McCoy
David B. McCoy

1/17/06
Date

Registered Professional Surveyor No. 7632

Order No. 180-06