

# BAUER, DAVIDSON & MERCHANT, INC.

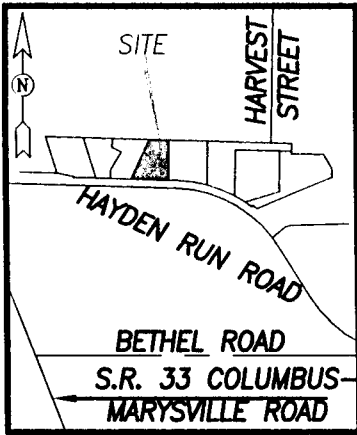
CONSULTING ENGINEERS

255 GREEN MEADOWS DRIVE SOUTH WESTERVILLE, OHIO 43081

PHONE: 614-846-3393

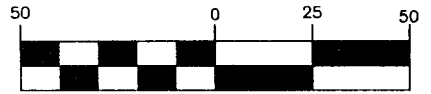
FAX: 614-846-4575

**SURVEY MAP OF A 1.092 ACRE TRACT OF LAND LOCATED ON THE NORTH SIDE OF HAYDEN RUN ROAD AND EAST OF COLUMBUS-MARYSVILLE ROAD (STATE ROUTE 33) IN THE CITY OF COLUMBUS, COUNTY OF FRANKLIN, STATE OF OHIO**



SITE MAP  
NOT TO SCALE

GRAPHIC SCALE



( IN FEET )

1 inch = 50 ft.

Hayden Falls Condominium 2  
C.P.B. 73, P. 52

Donald R. Kenney, Trustee  
PARCEL 4X EXHIBIT A  
0.974 Acre  
D.B. 3719, P. 422

RECEIVED

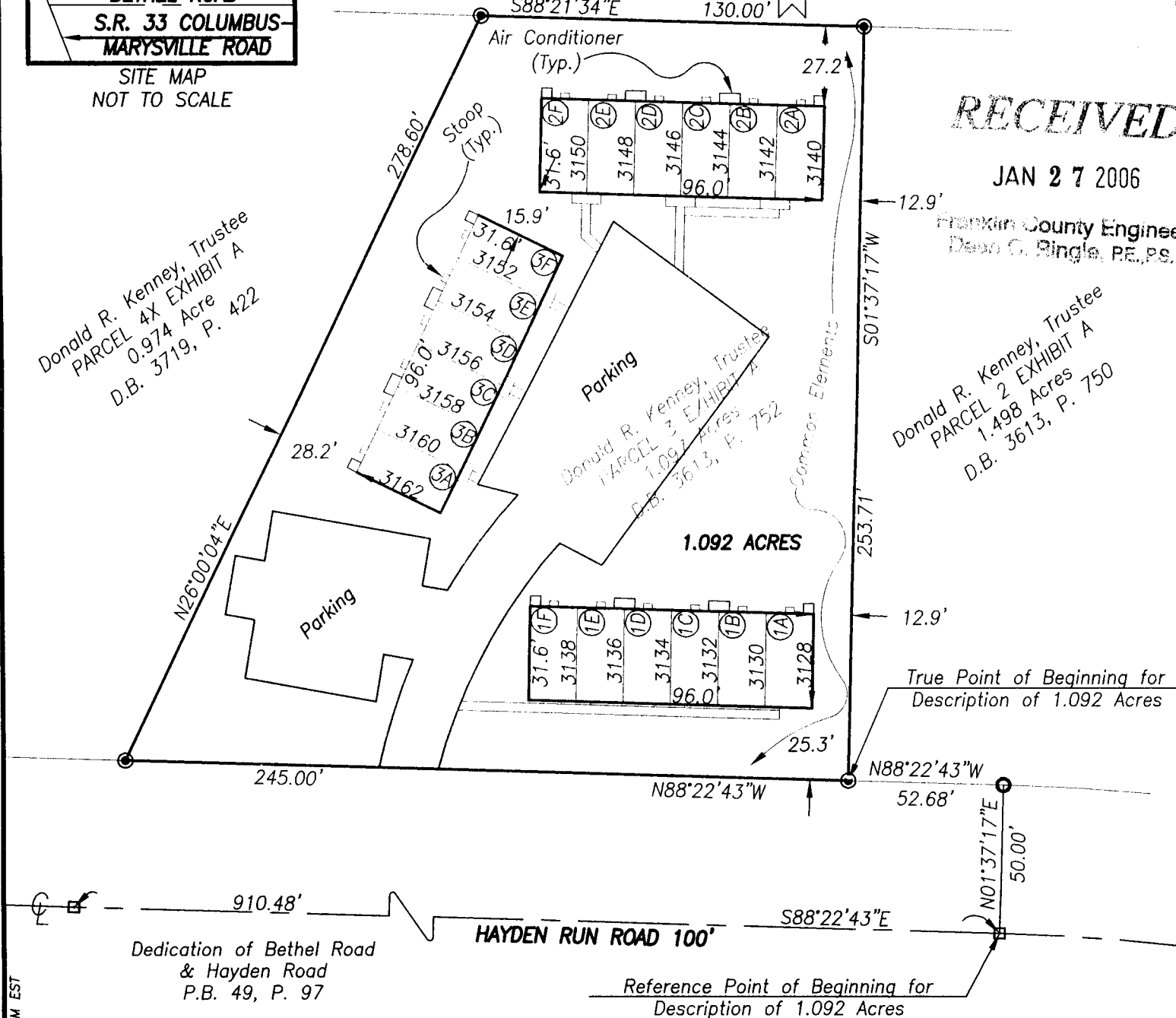
JAN 27 2006

Franklin County Engineer  
Dean C. Ringle, PE, PS.

Donald R. Kenney, Trustee  
PARCEL 2 EXHIBIT A  
1.498 Acres  
D.B. 3613, P. 750

Donald R. Kenney, Trustee  
PARCEL 3 EXHIBIT A  
1.092 Acres  
D.B. 3613, P. 752

1.092 ACRES



Situated in the State of Ohio, County of Franklin, City of Columbus, being in Quarter Township 3, Township 2, Range 19, United States Military Lands, containing 1.092 acres of land, more or less, said 1.092 acres being part of that 1.097 acre tract of land, designated as PARCEL 3 and described in EXHIBIT A in the deed to Donald R. Kenney, Trustee, of record in Deed Book 3613, Page 752, Recorder's Office, Franklin County, Ohio.

The bearings shown on this survey map are based upon the bearing of S88°22'43"E, for the centerline of Hayden Run Road as the same is delineated upon the recorded plat of Dedication of Bethel Road and Hayden Road, of record in Plat Book 49, Page 97, Recorder's Office, Franklin County, Ohio.

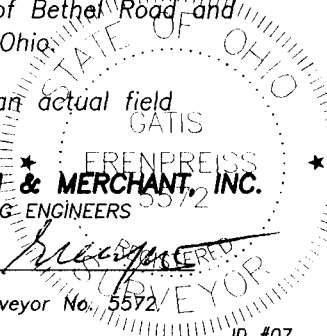
We hereby state that this survey map was prepared from information obtained from an actual field survey conducted by Bauer, Davidson & Merchant, Inc. in December of 2005.

**LEGEND**

- = Centerline Monument Found
- = 3/4-Inch (I.D.) Iron Pipe Found
- ⊙ = 3/4-Inch (I.D.) Iron Pipe Set
- Ⓛ = Unit Number
- 3134 = Unit Address

BAUER, DAVIDSON & MERCHANT, INC.  
CONSULTING ENGINEERS

BY: *Gatis Erenpreiss*  
Gatis Erenpreiss  
Professional Surveyor No. 5572



H:\Dwg 05\337605\33765parcel3.dwg 1/25/2006 1:33:15 PM EST

SCALE: 1"=50'  
JANUARY 25, 2006  
ORDER NO. 3376-05

DWG 05\337605\33765parcel3.dwg

ID #07