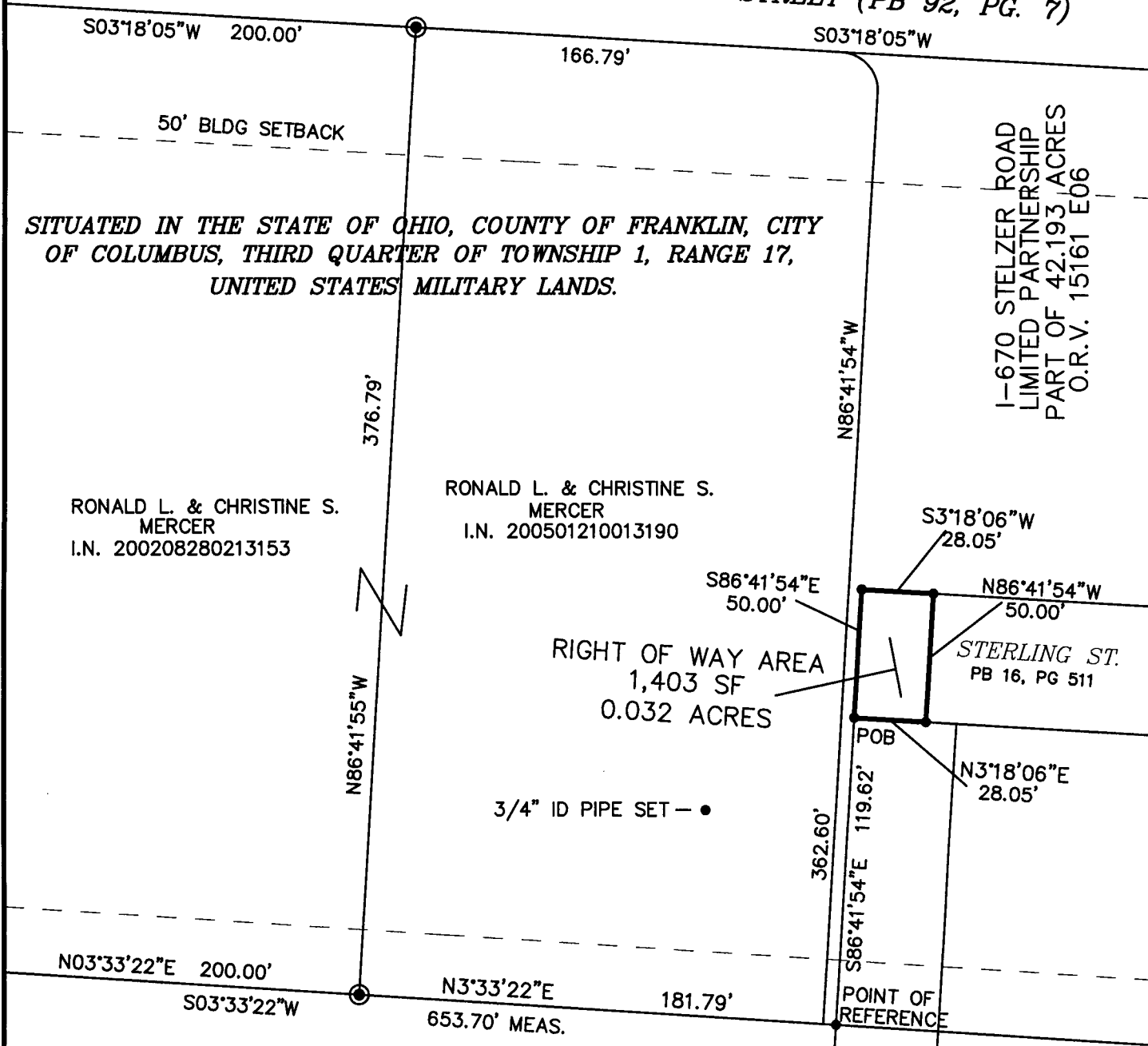




PREPARED BY:  
**HOCKADEN AND ASSOCIATES, INC.**  
 Consulting Engineers & Surveyors  
 883 North Cassady Avenue  
 Columbus, Ohio 43219  
 Telephone: (614) 252-0993  
 Fax: (614) 252-0444

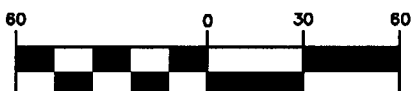
## BOUNDARY EXHIBIT

*DEDICATION OF JETWAY BOULEVARD AND RUNWAY STREET (PB 92, PG. 7)*

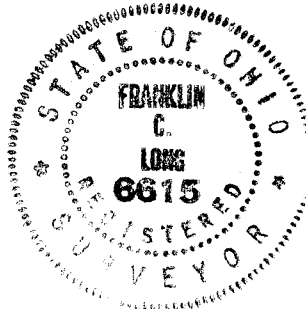


DRAKE ROAD SUBDIVISION  
 PLAT BOOK 21, PAGE 10

**GRAPHIC SCALE**



( IN FEET )  
 1 inch = 60 ft.



EXISTING DRAKE RD 40'  
 RECORD NO. 17, PAGE 66A

**RECEIVED**

DEC 02 2005

Franklin County Engineer  
 Dean C. Ringle, P.E., P.S.

SCALE: 1"=60'

DATE: 07-06-2005

SURVD	DRAWN	CHECKED
SUR. BY	FCL	CK BY

REVISED DATES	42249/10.5

**HOCKADEN AND ASSOCIATES, INC.**  
 CONSULTING ENGINEERS & SURVEYORS

By *Frank C. Long*  
 FRANK C. LONG, P.S. No. 6615