



EVANS, MECHWART, HAMBLETON & TILTON, INC.
170 MILL STREET, GAHANNA, OHIO 43230
TELEPHONE (614) 471-5150 - FACSIMILE (614) 471-9286

SURVEY OF ACREAGE PARCEL
SOUTHWEST QUARTER SECTION 10, QUARTER TOWNSHIP 1,
TOWNSHIP 2, RANGE 16
UNITED STATES MILITARY LANDS
PLAIN TOWNSHIP, FRANKLIN COUNTY, OHIO

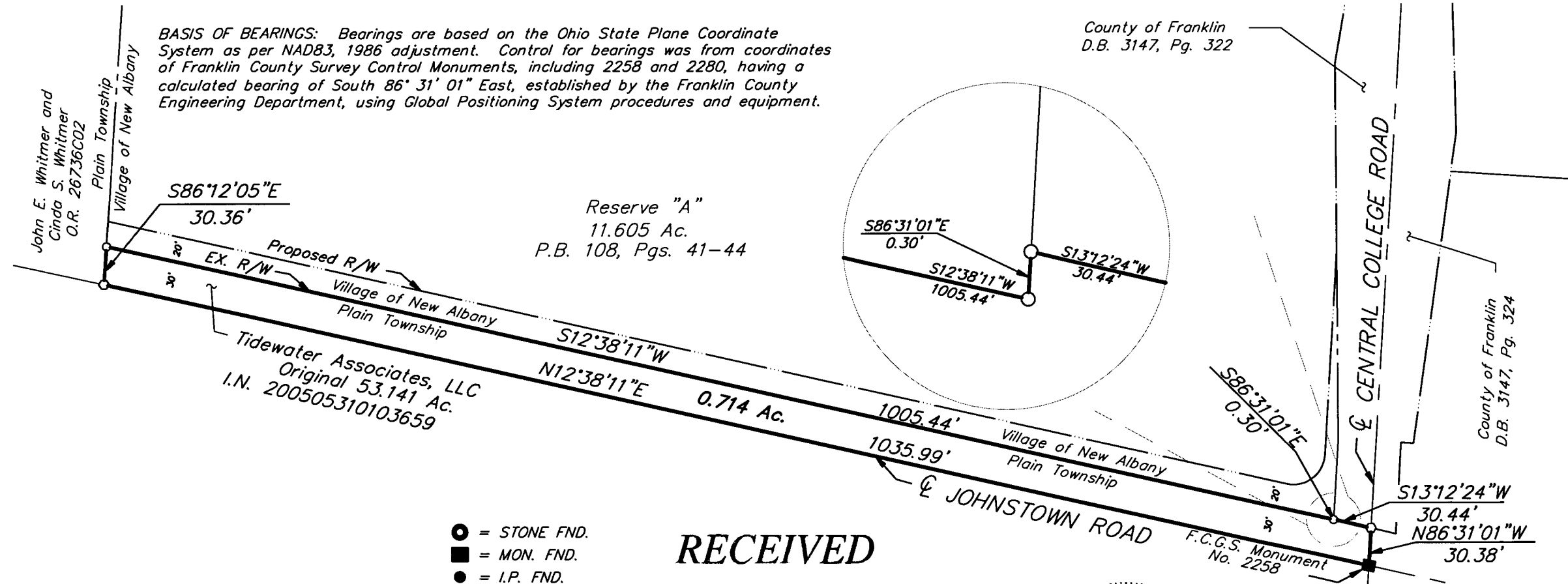
Date: December 6, 2005

Scale: 1" = 100'

Job No: 2004-1014

BASIS OF BEARINGS: Bearings are based on the Ohio State Plane Coordinate System as per NAD83, 1986 adjustment. Control for bearings was from coordinates of Franklin County Survey Control Monuments, including 2258 and 2280, having a calculated bearing of South 86° 31' 01" East, established by the Franklin County Engineering Department, using Global Positioning System procedures and equipment.

County of Franklin
D.B. 3147, Pg. 322



- = STONE FND.
- = MON. FND.
- = I.P. FND.
- = I.P. SET
- = MAG. NAIL FND.
- = MAG. NAIL SET
- ▲ = R.R. SPK. FND.
- △ = R.R. SPK. SET
- ◆ = P.K. NAIL FND.

I.P. Set are 13/16" I.D. iron pipe with cap inscribed EMHT INC

RECEIVED

DEC 15 2005

Franklin County Engineer
Dean C. Ringle, P.E., P.S.



GRAPHIC SCALE
(IN FEET)



2/15/05
Professional Surveyor No. 8250

\\CMHDATA1\PROJECT\20041014\DWG\41014BV.DWG-LEGAL LANDS - NO XREFS - LAST SAVED [8/18/2005 7:08:31 AM] - PLOTTED BY WILLIAMSON [8/18/2005 8:03:03 AM]