

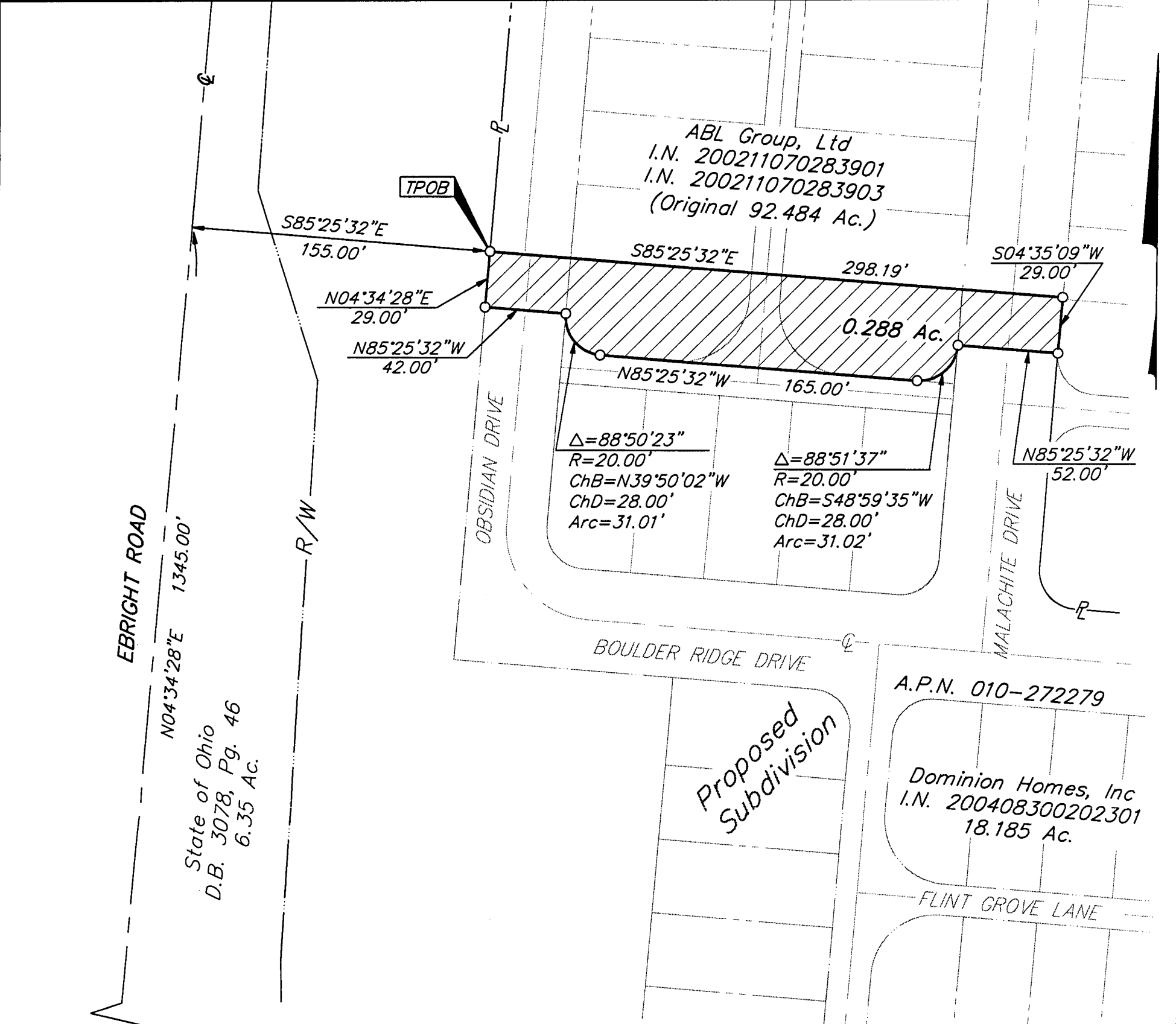
SURVEY OF ACREAGE PARCEL SECTION 15, TOWNSHIP 11, RANGE 21 CONGRESS LANDS CITY OF COLUMBUS, FRANKLIN COUNTY, OHIO

Date: November 16, 2005

Scale: 1" = 60'

Job No: 2005-1698

M C M X X V I



BASIS OF BEARINGS: Bearings are based on the Ohio State Plane Coordinate System per NAD83 (1986 Adjustment). Control for bearings was from coordinates of monuments FRANK 32 & FRANK 132, having a bearing of South 57°12'05" East, as established by the Franklin County Engineering Department.

By: John C. Dodgin
 Professional Surveyor No. 8069

- = STONE FND.
- = MON. FND.
- = I.P. FND.
- = I.P. SET
- = MAG. NAIL FND.
- = MAG. NAIL SET
- ▲ = R.R. SPK. FND.
- △ = R.R. SPK. SET
- ◆ = P.K. NAIL FND.

I.P. Set are 13/16" I.D. iron pipe with cap inscribed EMHT INC

RPOB
 F.C.G.S. 5563
 BACHMAN ROAD

RECEIVED

NOV 30 2005

Franklin County Engineer
 Dean C. Ringle, P.E., P.S.



GRAPHIC SCALE
 (IN FEET)

\\C:\DATA\1\SURVEY\PROJECT\20051698\DWG\CORLETON OVER LAY\51698B.DWG<11X17 PORTRAIT HP5000> - NO XREFS - LAST SAVED BY: SGEGER [11/21/2005 5:49:27 PM] - PLOTTED BY: PSINGLETON [11/22/2005 8:36:02 AM]