

EMH&T

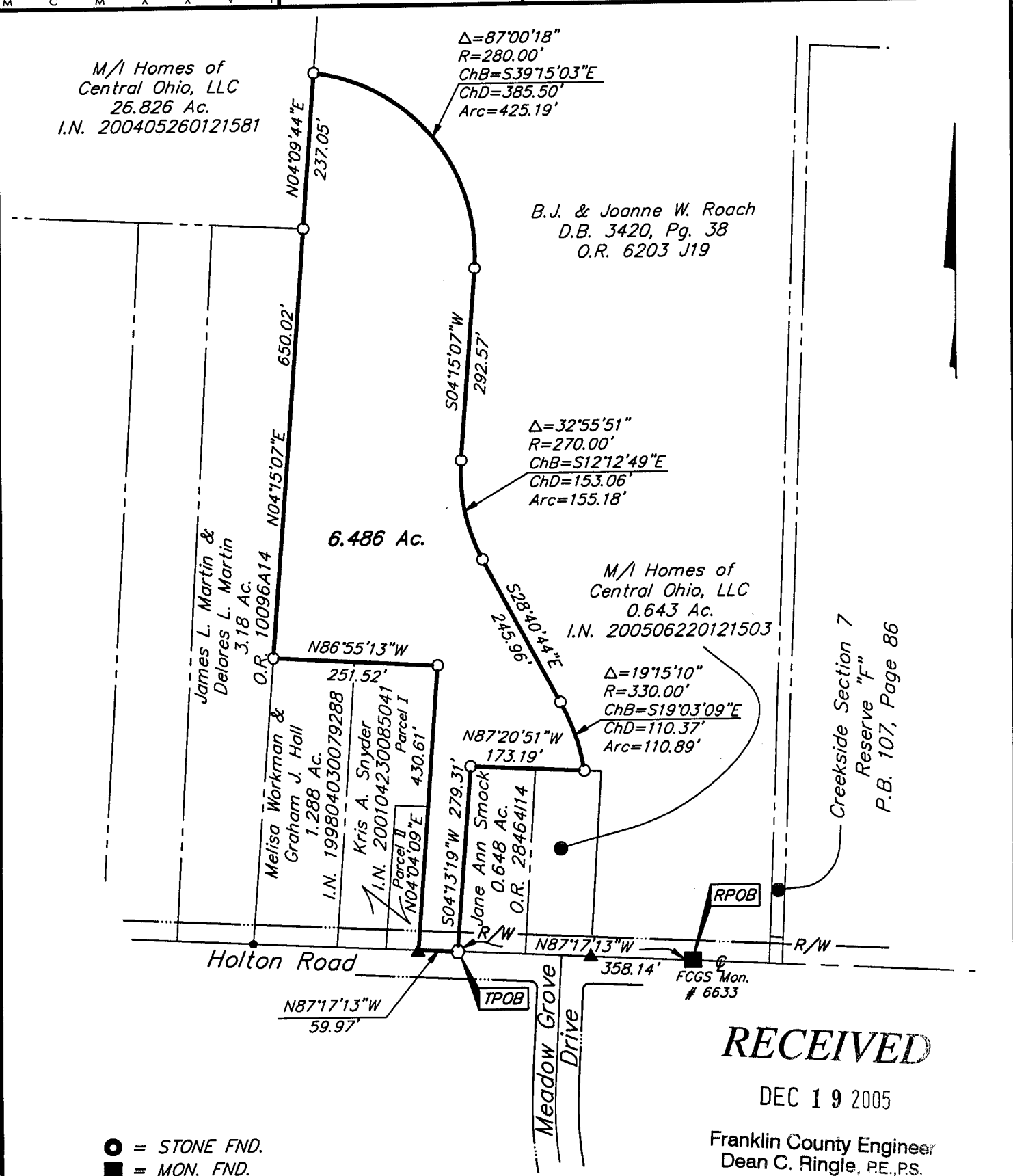
Evans, Mechwart, Hambleton & Tilton, Inc.
 Engineers • Surveyors • Planners • Scientists
 5500 New Albany Road, Columbus, OH 43054
 Phone: 614.775.4500 Fax: 614.775.4800

SURVEY OF ACREAGE PARCEL VIRGINIA MILITARY SURVEY 6840 CITY OF GROVE CITY, FRANKLIN COUNTY, OHIO

Date: December 14, 2005

Job No. 2005-1310

Scale: 1" = 200'



- = STONE FND.
- = MON. FND.
- = I.P. FND.
- = I.P. SET
- = MAG. NAIL FND.
- = MAG. NAIL SET
- ▲ = R.R. SPK. FND.
- △ = R.R. SPK. SET
- = P.K. NAIL FND.

I.P. Set are 13/16" I.D. iron pipe with cap inscribed EMHT INC

BASIS OF BEARINGS: Bearings are based on the Ohio State Plane Coordinate System as per NAD83 (1986 Adjustment). Control for bearings was from coordinates of monuments FRANK 125 & FRANK 25, established by the Franklin County Engineering Department, using Global Positioning System procedures and equipment.

RECEIVED
 DEC 19 2005

Franklin County Engineer
 Dean C. Ringle, PE., PS.



GRAPHIC SCALE (IN FEET)

By: James M. Peacock 12/16/05
 Professional Surveyor No. 7840

\\CMHDATA1\SURVEY\PROJECT\20051310\DWG\51310B\DWG\LEGAL\PORTRAIT> - NO XREFS - LAST SAVED BY JMC FARLAND [12/16/2005 11:10:34 AM] - PLOTTED BY JMC FARLAND [12/16/2005 11:16:10 AM]