

SITE ENGINEERING, INC.

6559 E. LIVINGSTON AVE.
REYNOLDSBURG, OHIO 43068
PHONE: (614) 759-9900

FILE # 2836
DATE: DEC 05

SCALE: 1"=150'

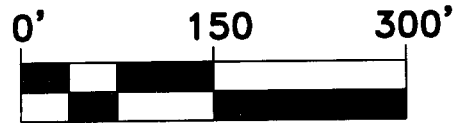
SITUATED IN THE STATE OF OHIO, COUNTY OF FRANKLIN, CITY OF COLUMBUS, BEING IN V.M.S. 5239-5241 & 7065, AND BEING ALL OF LOT 8 AS DESIGNATED AND DELINEATED ON THE RECORDED PLAT OF WALCUTT INDUSTRIAL PARK OF RECORD IN P.B. 45, PG. 40, RECORDER'S OFFICE, FRANKLIN COUNTY, OHIO.

RECEIVED

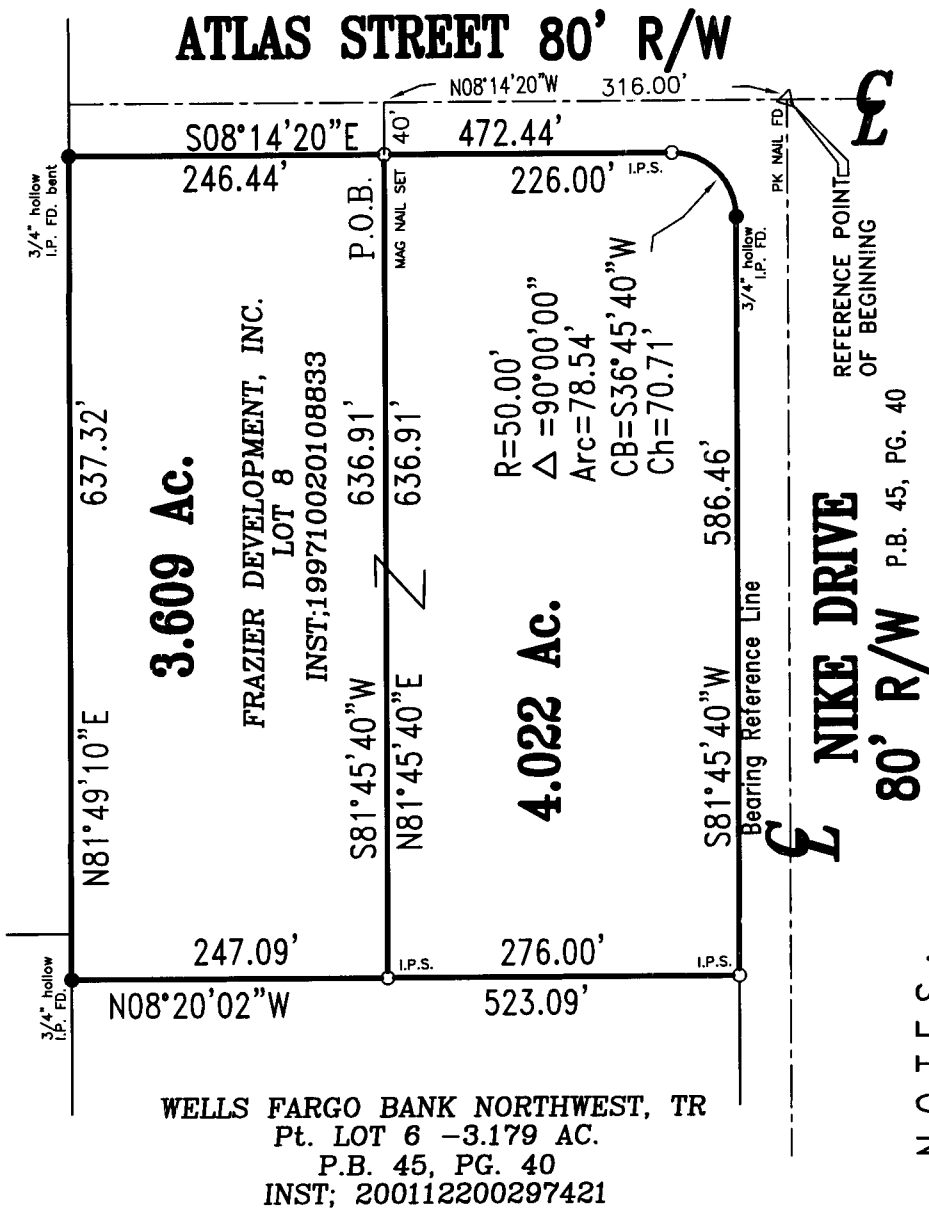
DEC 16 2005



Franklin County Engineer
Dean C. Ringle, P.E., P.S.



GRAPHIC SCALE



- NOTES:**
- 1) Bearings are used for the determination of angles only. For the purpose of this survey a bearing of S81°45'40"W was used on the northerly right-of-way line of Nike Drive as shown on P.B. 45, PG. 40.
 - 2) The iron pins set (I.P.S.) are 5/8" rebar, 30" long with yellow plastic caps stamped "SITE ENG INC".

CITY OF COLUMBUS OHIO
6.74 AC.
INST; 200010260217362

SADOUN PROPERTIES, LLC
PART LOT 5-2.248 AC.
P.B. 45, PG. 40
INST; 200503150047865

WELLS FARGO BANK NORTHWEST, TR
Pt. LOT 6 - 3.179 AC.
P.B. 45, PG. 40
INST; 200112200297421

We do hereby certify that an actual field survey was made of the premises shown on this plat during November, 2005.

SITE ENGINEERING, INC.

By *Mark A Hazel, pps 12-15-05*
Professional Surveyor No. 7039

