

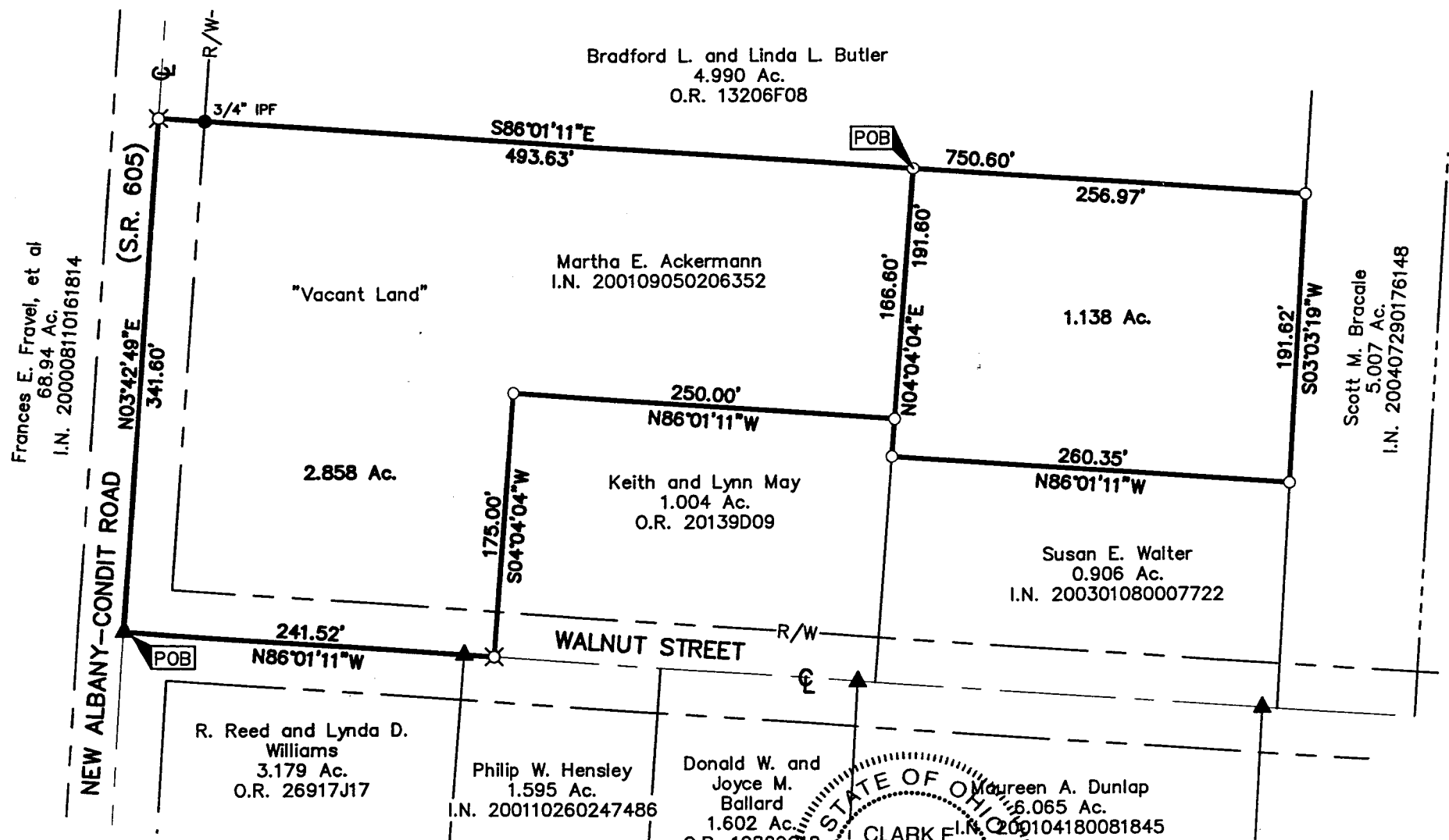
SURVEY OF ACREAGE PARCELS

LOCATED IN SECTION 3, QUARTER TOWNSHIP 1, TOWNSHIP 2, RANGE 16
 UNITED STATES MILITARY LANDS
 PLAIN TOWNSHIP, FRANKLIN COUNTY, OHIO

RECEIVED

SEP 09 2005

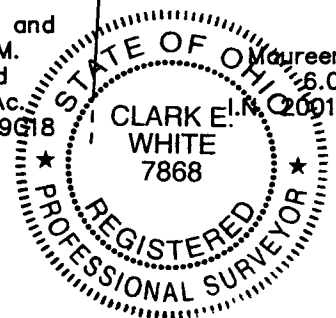
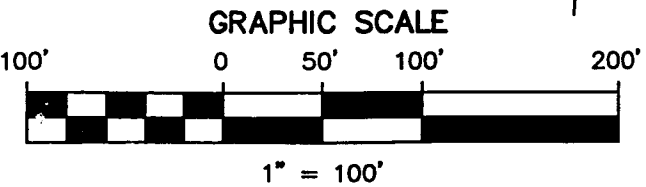
Franklin County Engineer
 Dean C. Ringle, P.E., P.S.



LEGEND

<ul style="list-style-type: none"> ● Iron Pin Found ✕ PK Nail Found ▲ RR Spike Found ◻ Monument Box 	<ul style="list-style-type: none"> ○ Iron Pin Set W/Cap ✕ PK Nail Set △ RR Spike Set ⊕ Monument
---	---

The Basis of Bearings shown hereon was transferred from a GPS survey of Franklin County Monuments "Frank 82" and "Frank 182" performed by the Franklin County Engineer's Office, and is based upon the NAD83 Ohio State Plane Coordinate System, South Zone, 1986 adjustment, and determines the bearing between said monuments as S04° 22' 37"W.



Clark E. White

Clark E. White
 Professional Surveyor #7868

Date: 8/24/05

DRAWN BY: CEW	JOB NO.: 03-0001-26
DATE: 08/24/05	CHECKED BY: DRH

ADVANCED
 CIVIL DESIGN

ENGINEERS & SURVEYORS

4605 Morse Road
 Suite 101
 Columbus, Ohio 43230
 ph 614.428.7750
 fax 614.428.7755