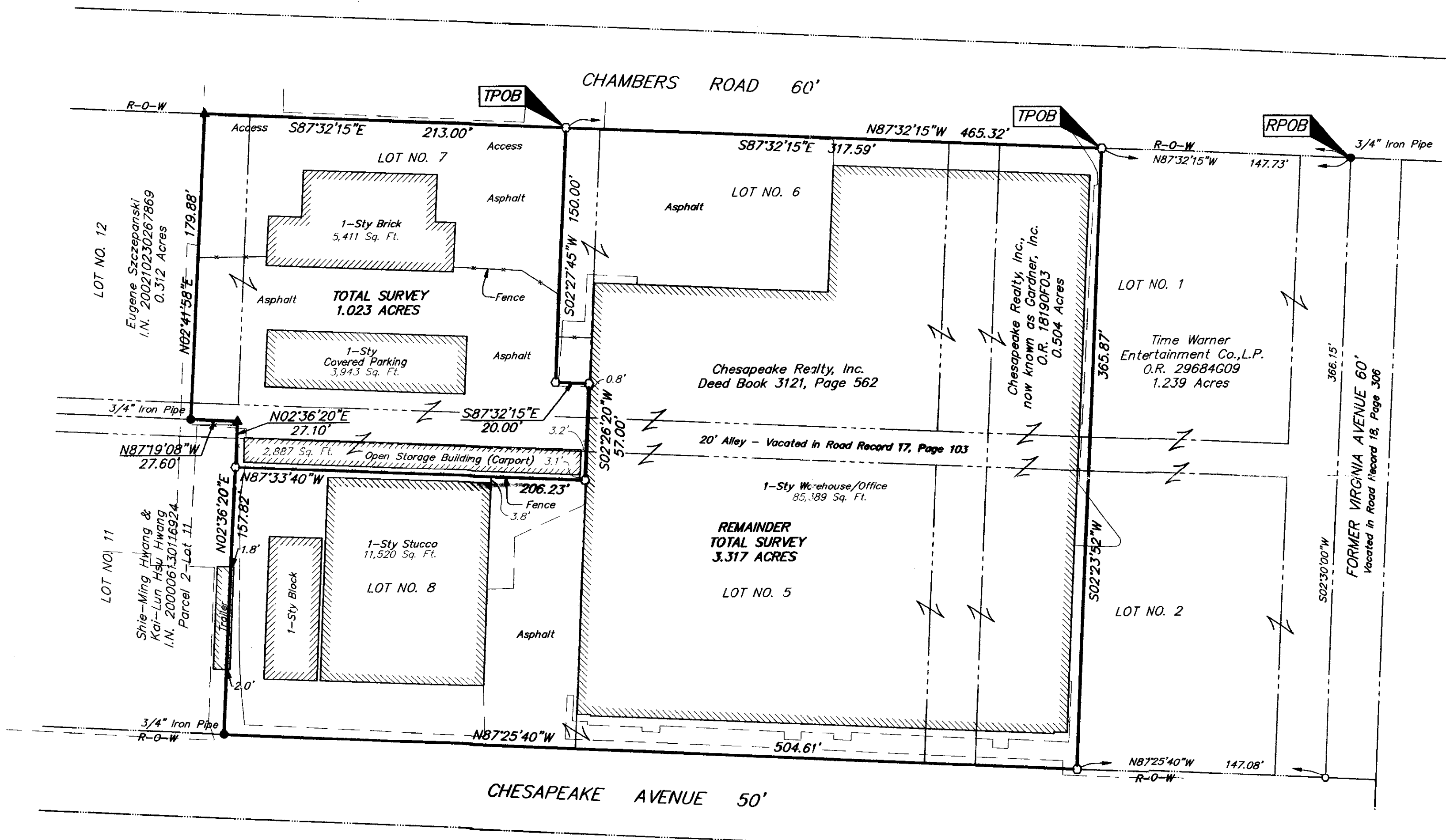


SURVEY OF ACREAGE PARCEL
JOHN M. PUGH'S SUBDIVISION
PLAT BOOK 4, PAGE 103
CLINTON TOWNSHIP, FRANKLIN COUNTY, OHIO

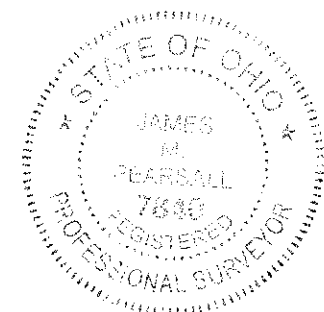


RECEIVED
 OCT 07 2005
 Franklin County Engineer
 Dean C. Ringle, PE., PS.

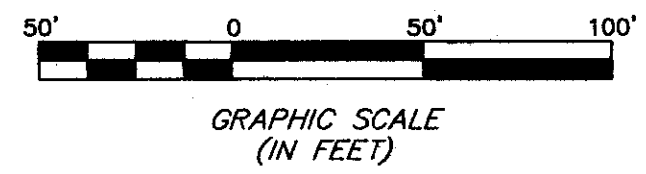
Note:
 This survey was prepared using documents of record,
 prior plats of survey, and observable field evidence.

- = STONE FND.
 - = MON. FND.
 - = I.P. FND.
 - = I.P. SET
 - = MAG. NAIL FND.
 - = MAG. NAIL SET
 - ▲ = R.R. SPK. FND.
 - △ = R.R. SPK. SET
 - = P.K. NAIL FND.
- I.P. Set are 13/16" I.D. iron pipe with cap inscribed EMHT INC

RECEIVED
 OCT 07 2005
 Franklin County Engineer
 Dean C. Ringle, PE., PS.



By: *James M. Peadar* 10/6/05
 Professional Surveyor No. 7840



BASIS OF BEARINGS: Bearings are based on the south right-of-way line of Chambers Road being South 87° 32' 15" East as found in Official Record 2968# G09 (east adjoiners)

 ENGINEERS, SURVEYORS, PLANNERS, SCIENTISTS EVANS, MECHWART, HAMBLETON & TILTON, INC. 170 MILL STREET GAHANNA, OHIO 43230 TELEPHONE (614) 471-5150 FACSIMILE (614) 471-9286	Date: April 22, 2004	
	Scale: 1" = 50'	
	Job No: 2004-0668	
	Sheet: 1 of 1	
REVISIONS		
MARK	DATE	DESCRIPTION

\\CMHARC1\ARCHIVED\2004\20040668\DWG\40668B\DWG<18124 LANDSCAPE> - NO XREFS - LAST SAVED [6/9/2004 11:56:05 AM] - PLOTTED BY THEBB [10/6/2005 12:56:25 PM]