

# SURVEY OF ACREAGE PARCEL

## SECTION 14, QUARTER TOWNSHIP 2, TOWNSHIP 2, RANGE 16

### UNITED STATES MILITARY LANDS

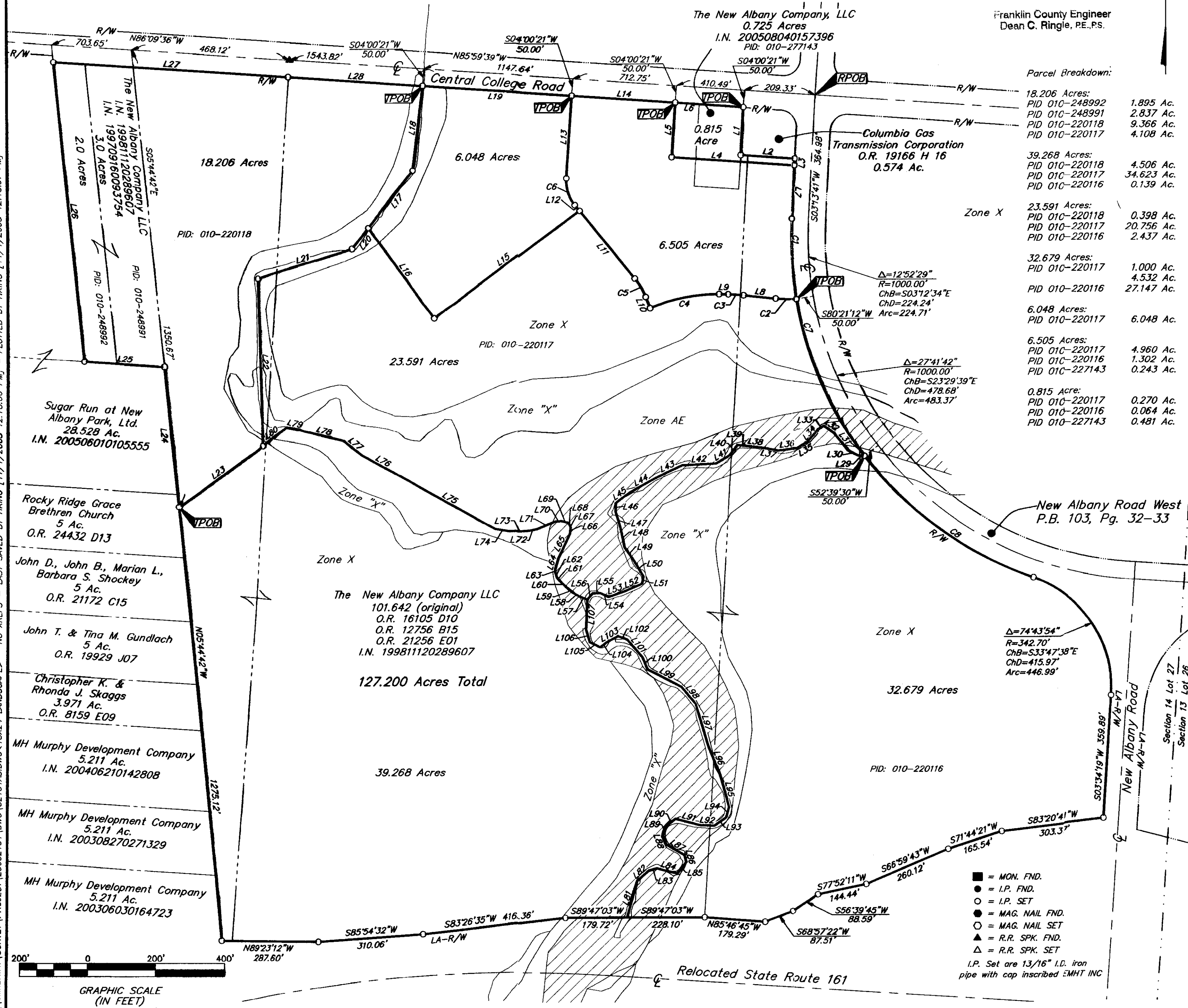
#### CITY OF COLUMBUS, FRANKLIN COUNTY, OHIO

**RECEIVED**

NOV 02 2005

Franklin County Engineer  
Dean C. Ringle, P.E., P.S.

**BASIS OF BEARINGS:** Bearings are based on the Ohio State Plane Coordinate System as per NAD83 (1986 Adjustment). Control for bearings was from coordinates of monuments Frank 5574 and Frank 5113, with Central College Road having a bearing of South 86° 09' 36" East, established by the Franklin County Engineering Department, using Global Positioning System procedures and equipment.



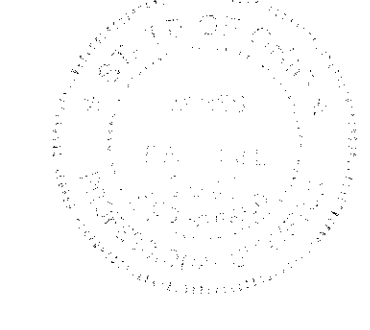
LINE TABLE		
LINE	BEARING	DISTANCE
L1	S03°13'41"W	140.00'
L2	S85°59'39"E	160.00'
L3	S03°13'41"W	20.00'
L4	S85°59'39"E	363.05'
L5	S03°54'05"W	159.98'
L6	N85°59'39"W	201.17'
L7	S03°13'41"W	155.72'
L8	N84°00'33"W	95.63'
L9	N89°12'59"W	26.72'
L10	N21°44'39"W	34.90'
L11	N38°46'01"W	254.44'
L12	S38°46'01"E	22.07'
L13	N04°00'21"E	242.04'
L14	S85°59'39"E	302.25'
L15	N53°38'25"E	527.47'
L16	S36°22'03"E	325.67'
L17	N38°06'21"E	213.74'
L18	S07°03'09"W	251.19'
L19	S85°59'39"E	434.90'
L20	N38°06'21"E	77.82'
L21	S73°20'56"W	295.74'
L22	S01°56'04"E	490.64'
L23	S53°37'57"W	305.54'
L24	N05°44'42"W	413.23'
L25	N86°05'32"W	236.10'
L26	N05°42'49"W	886.36'
L27	S86°09'36"E	695.16'
L28	S85°59'39"E	396.10'
L29	S85°27'02"E	19.07'
L30	S63°22'25"E	32.58'
L31	S38°29'02"E	67.91'
L32	S55°38'48"E	36.02'
L33	N58°01'05"E	18.45'
L34	N40°15'23"E	49.25'
L35	N58°50'55"E	37.03'
L36	N83°34'24"E	55.91'
L37	S80°14'48"E	48.43'
L38	S83°40'14"E	42.51'
L39	S83°29'03"E	30.28'
L40	N37°29'55"E	38.36'
L41	N59°29'18"E	45.95'
L42	N87°06'29"E	100.64'
L43	N65°02'30"E	81.74'
L44	N60°35'29"E	90.89'
L45	N53°03'11"E	52.15'
L46	N00°00'15"W	26.09'
L47	N16°56'49"W	50.86'
L48	N11°36'29"W	56.15'
L49	N34°45'30"W	46.96'
L50	N30°29'34"W	55.64'
L51	N09°47'04"E	20.75'
L52	N66°25'42"E	54.67'
L53	N70°50'01"E	51.55'
L54	S63°27'44"E	25.25'

LINE TABLE		
LINE	BEARING	DISTANCE
L55	N88°15'54"E	23.30'
L56	N41°21'57"E	23.55'
L57	S67°44'34"E	23.94'
L58	S60°16'32"E	20.59'
L59	S52°16'27"E	20.02'
L60	S46°48'09"E	37.14'
L61	S39°25'40"E	8.44'
L62	S17°44'41"E	15.75'
L63	S02°26'12"E	9.41'
L64	S15°52'39"W	34.72'
L65	S25°43'28"W	79.25'
L66	S05°04'47"W	18.07'
L67	S11°46'06"E	4.90'
L68	S33°41'24"E	10.82'
L69	S75°13'42"E	20.79'
L70	N84°43'17"E	18.48'
L71	N67°51'02"E	58.09'
L72	N79°16'08"E	25.24'
L73	N86°39'35"E	51.49'
L74	S80°29'31"E	43.04'
L75	S60°34'18"E	322.20'
L76	S61°26'57"E	127.22'
L77	S51°54'17"E	67.65'
L78	S75°46'16"E	129.00'
L79	S78°41'48"E	44.01'
L80	N53°37'57"E	90.91'
L81	N15°05'42"E	111.30'
L82	N48°40'23"E	46.99'
L83	N75°32'33"E	22.60'
L84	S76°17'41"E	62.48'
L85	N38°13'54"E	42.19'
L86	N15°26'27"W	21.22'
L87	N59°57'32"W	61.97'
L88	N20°07'01"W	30.79'
L89	N23°58'47"E	27.79'
L90	N50°59'05"E	33.61'
L91	S75°43'01"E	74.29'
L92	S87°14'05"E	43.81'
L93	N53°49'11"E	41.40'
L94	N17°12'53"E	31.00'
L95	N15°44'20"W	98.90'
L96	N22°14'49"W	91.82'
L97	N17°03'06"W	127.60'
L98	N40°05'37"W	65.99'
L99	N62°39'16"W	112.34'
L100	N23°13'20"W	37.60'
L101	N40°30'18"W	69.55'
L102	N69°47'50"W	28.58'
L103	S61°04'01"W	37.90'
L104	S51°21'42"W	22.59'
L105	N64°30'35"W	34.41'
L106	N16°48'55"W	39.04'
L107	N02°13'01"E	85.67'

**Parcel Breakdown:**

18.206 Acres:	1.895 Ac.
PID 010-248992	2.837 Ac.
PID 010-248991	9.366 Ac.
PID 010-220118	4.108 Ac.
PID 010-220117	
39.268 Acres:	4.506 Ac.
PID 010-220118	34.623 Ac.
PID 010-220117	0.139 Ac.
PID 010-220116	
23.591 Acres:	0.398 Ac.
PID 010-220118	20.756 Ac.
PID 010-220117	2.437 Ac.
PID 010-220116	
32.679 Acres:	1.000 Ac.
PID 010-220117	4.532 Ac.
PID 010-220116	27.147 Ac.
PID 010-220116	
6.048 Acres:	6.048 Ac.
PID 010-220117	
6.505 Acres:	4.960 Ac.
PID 010-220117	1.302 Ac.
PID 010-220116	0.243 Ac.
PID 010-227143	
0.815 Acre:	0.270 Ac.
PID 010-220117	0.064 Ac.
PID 010-220116	0.481 Ac.
PID 010-227143	

CURVE TABLE					
CURVE	DELTA	RADIUS	ARC	CH BRG	CH
C1	12°52'29"	1050.00'	235.94'	S03°12'34"E	235.45'
C2	06°46'22"	521.16'	61.61'	S88°21'09"E	61.57'
C3	05°12'26"	500.00'	45.44'	N86°36'46"W	45.43'
C4	23°54'10"	500.00'	208.59'	S78°49'56"W	207.08'
C5	17°01'22"	213.00'	63.28'	N30°15'20"W	63.05'
C6	42°46'22"	112.00'	83.61'	S17°22'50"E	81.68'
C7	27°41'42"	1050.00'	507.54'	S23°29'39"E	502.61'
C8	33°49'05"	1050.00'	619.75'	S54°15'03"E	610.79'



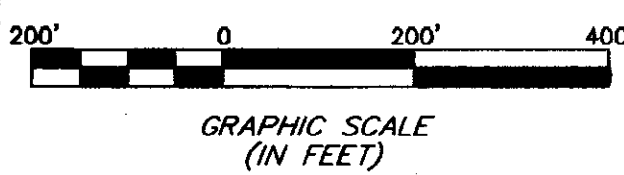
By: *James M. Pearson* 11/1/05  
Professional Surveyor No. 7840

**EMHT**  
Evans, Mechwart, Hambleton & Tilton, Inc.  
Engineers • Surveyors • Planners • Scientists  
5500 New Albany Road, Columbus, OH 43054  
Phone: 614.775.4500 Fax: 614.775.4800

Date: November 1, 2005  
Scale: 1" = 200'  
Job No: 2005-2131  
Sheet: 1 of 1

REVISIONS		
MARK	DATE	DESCRIPTION

I:\CHDATA\PROJECT\20052131\DWG\52131AS.DWG<18X24 LANDSCAPE> - NO XREFS - LAST SAVED BY HKING [11/1/2005 12:18:06 PM] - PLOTTED BY HKING [11/1/2005 12:18:07 PM]



- = MON. FND.
- = I.P. FND.
- = I.P. SET
- = MAG. NAIL FND.
- = MAG. NAIL SET
- ▲ = R.R. SPK. FND.
- △ = R.R. SPK. SET
- I.P. Set are 13/16" I.D. iron pipe with cap inscribed EMHT INC