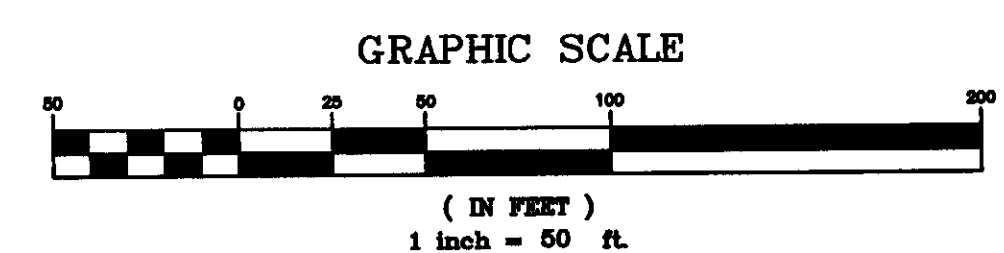
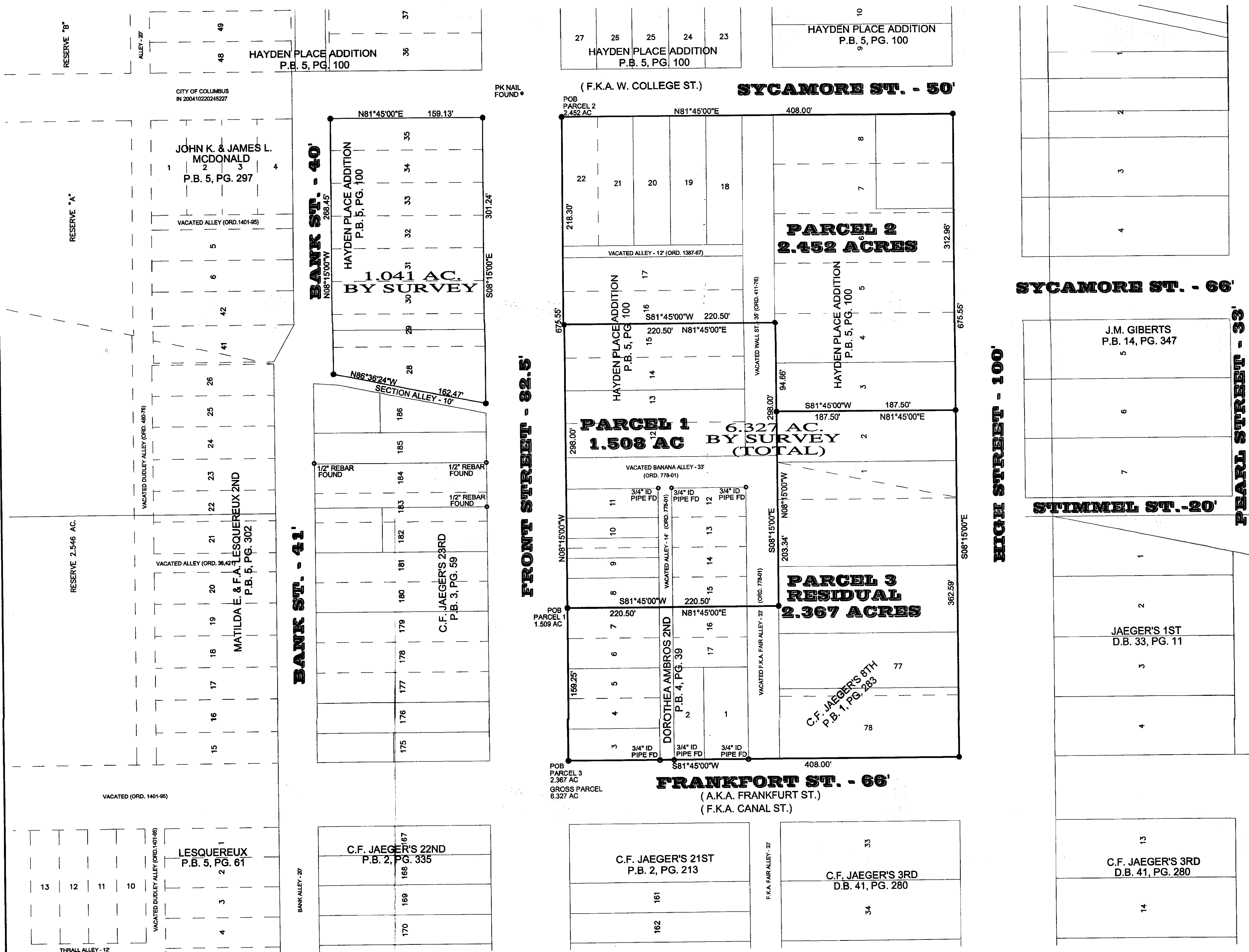


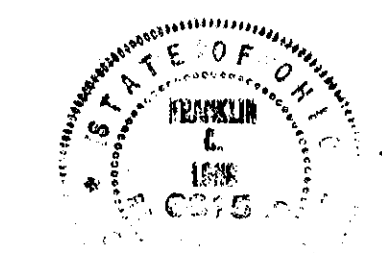
GRANGE MUTUAL INSURANCE

SITUATE IN THE STATE OF OHIO, COUNTY OF FRANKLIN, CITY OF COLUMBUS,
IN HALF SECTION 27, TOWNSHIP 5, RANGE 2, REFUGEE LANDS



SOURCE OF TITLE
GRANGE MUTUAL CASUALTY COMPANY
IN 200510180219849

HOCKADEN AND ASSOCIATES, INC.
CONSULTING ENGINEERS AND SURVEYORS



Frank C. Long
FRANK C. LONG
PROFESSIONAL SURVEYOR NO. 6615

DESCRIPTION	BOUND SURVEY & LOT SPLIT(S)
LOCATION	WEST OF HIGH ST. SOUTH OF W. COLLEGE ST. EAST OF BANK ST.
CLIENT	GRANGE MUTUAL INSURANCE
PREPARED BY	HOCKADEN AND ASSOCIATES, INC. Consulting Engineers & Surveyors 825 North Cassady Avenue Columbus, Ohio 43215 Telephone: (614) 292-0883 Fax: (614) 292-0444
DRAWN BY	FCL
CHECKED BY	FCL
DATE	NOV, 2005
ORDER No.	42437/10.1
AREA No.	36-7
SHEET	1 OF 2

LEGEND
● 3/4" ID PIPE SET

BEARING ARE BASED ON AN ASSUMED MERIDIAN AND ARE INTENDED TO DENOTE ANGLES ONLY. THE EASTERLY RIGHT OF WAY OF FRONT STREET BEARING NORTH 81°5'00" WEST.