

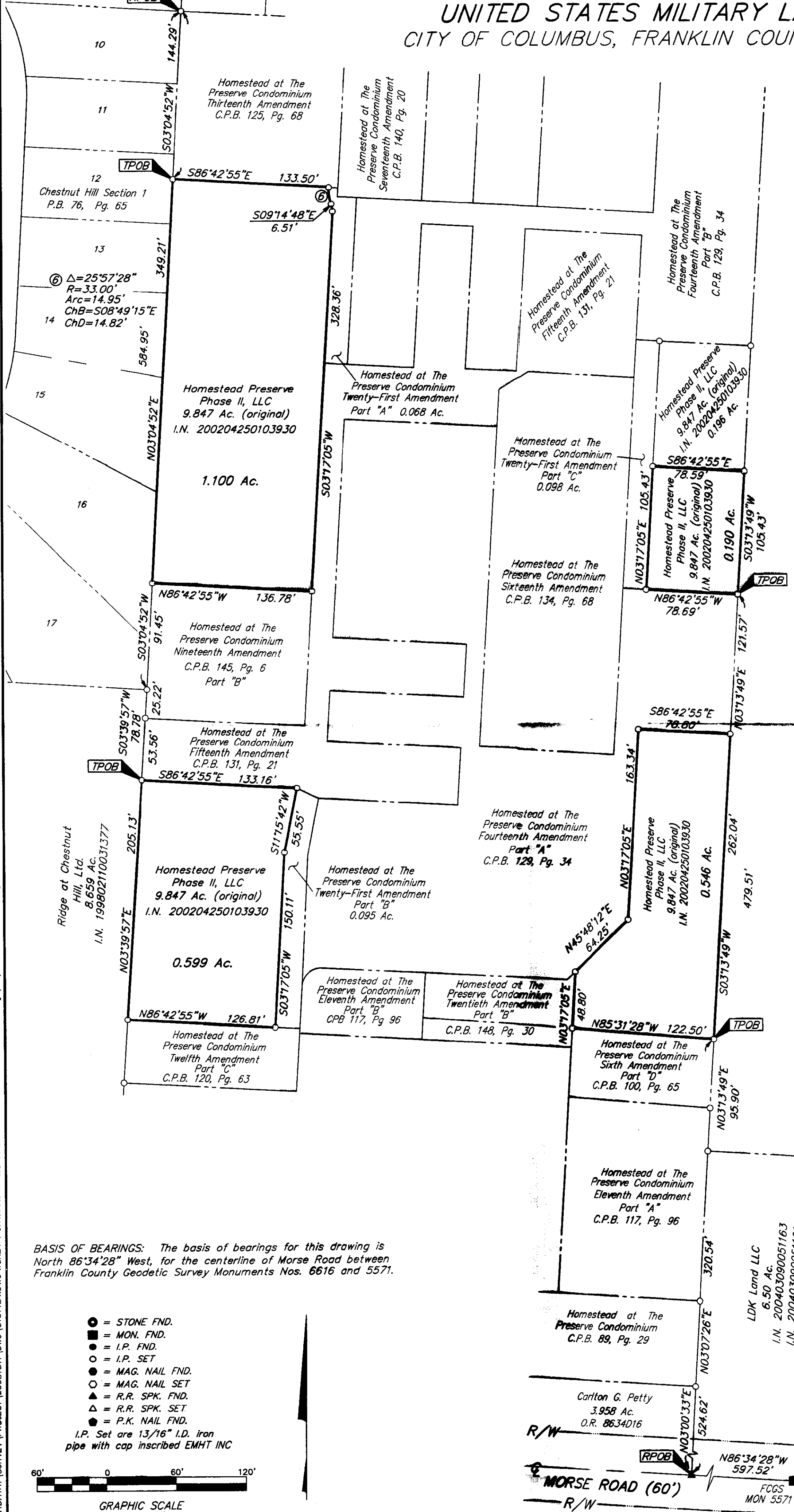
SURVEY OF ACREAGE PARCELS

QUARTER TOWNSHIP 3, TOWNSHIP 2, RANGE 16

UNITED STATES MILITARY LANDS

CITY OF COLUMBUS, FRANKLIN COUNTY, OHIO

Ronn L. Kolbash and
Catherine L. Kolbash
I.N. 200306040166671



RECEIVED
AUG 08 2005
Franklin County Engineer
Dean C. Ringle, P.E., P.S.

BASIS OF BEARINGS: The basis of bearings for this drawing is North 86°34'28" West, for the centerline of Morse Road between Franklin County Geodetic Survey Monuments Nos. 6616 and 5571.

- = STONE FND.
 - = MON. FND.
 - = I.P. FND.
 - = I.P. SET
 - = MAG. NAIL FND.
 - = MAG. NAIL SET
 - ▲ = R.R. SPK. FND.
 - ▲ = R.R. SPK. SET
 - = P.K. NAIL FND.
- I.P. Set are 1 3/16" I.D. Iron pipe with cap inscribed EMHT INC



By: Professional Surveyor No. 8250

EMHT INC. ENGINEERS, SURVEYORS, PLANNERS, SCIENTISTS		Date: August 4, 2005
EVANS, MECHWART, HAMBLETON & TILTON, INC. 170 MILL STREET GAHANNA, OHIO 43230 TELEPHONE (614) 471-5150 FACSIMILE (614) 471-9286		Scale: 1" = 60'
		Job No: 2005-1511
		Sheet: 1 of 1
REVISIONS		
MARK	DATE	DESCRIPTION

I:\CHDATA\PROJECT\20051511\DWG\51511B.DWG-18x24 PORTRAIT - LAST SAVED BY TBAXTER [7/15/2005 11:53:10 AM] - PLOTTED BY TBAXTER [7/15/2005 12:42:32 PM] - NO XREFS -