



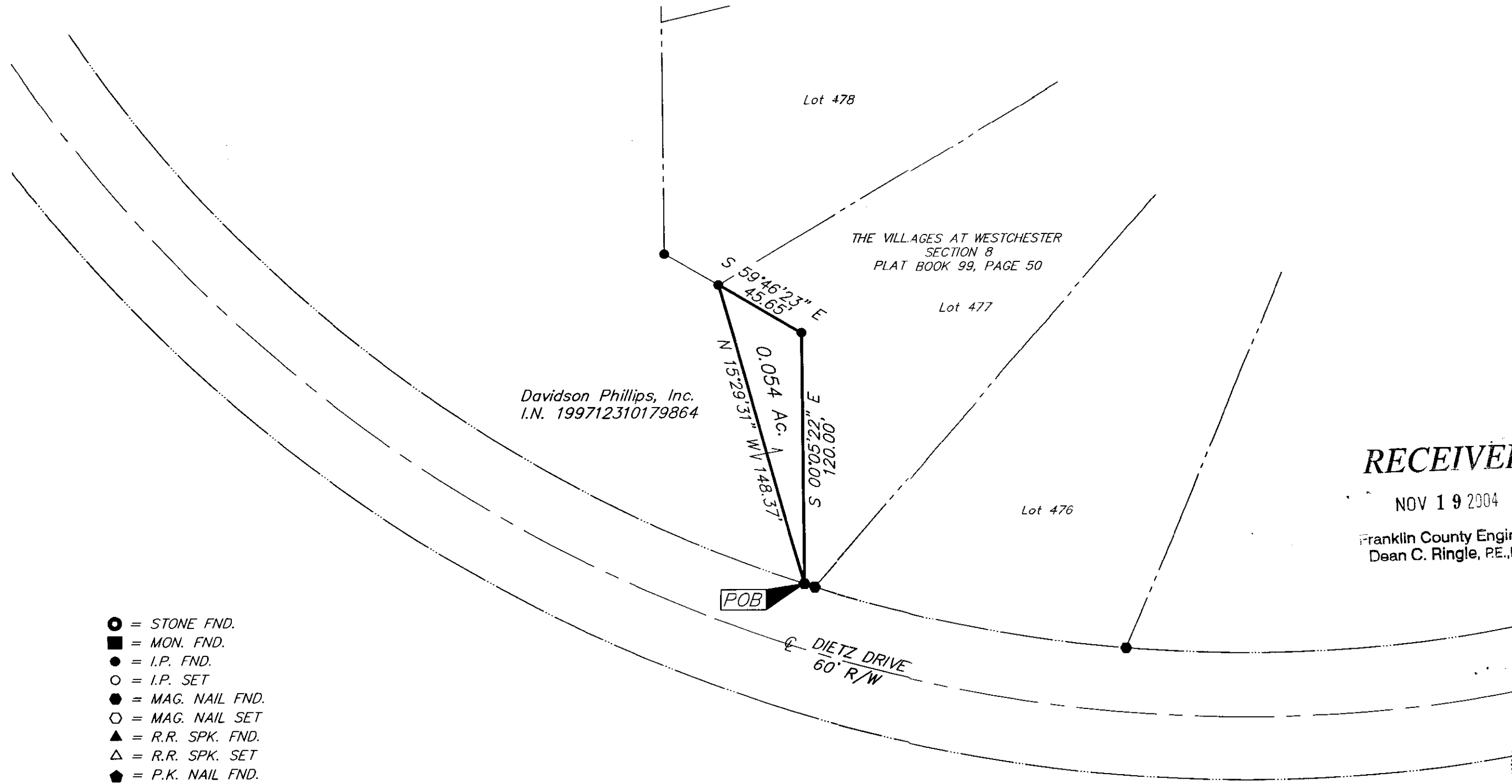
EVANS, MECHWART, HAMBLETON & TILTON, INC.
 170 MILL STREET, GAHANNA, OHIO 43230
 TELEPHONE (614) 471-5150 - FACSIMILE (614) 471-9286

SURVEY OF ACREAGE PARCEL
SECTION 31, TOWNSHIP 15, RANGE 20
CONGRESS LANDS
VILLAGE OF CANAL WINCHESTER, FRANKLIN COUNTY, OHIO

Date: September 27, 2004

Scale: 1" = 50'

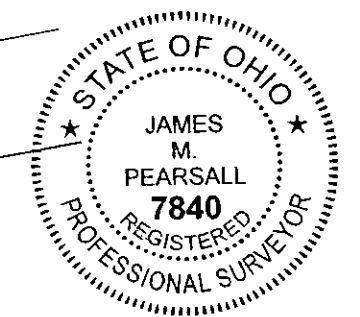
Job No: 2004-1667



RECEIVED

NOV 19 2004

Franklin County Engineer
 Dean C. Ringle, P.E., P.S.



By James M. Pearsall 9/27/04
 Professional Surveyor No. 7840

- = STONE FND.
- = MON. FND.
- = I.P. FND.
- = I.P. SET
- = MAG. NAIL FND.
- = MAG. NAIL SET
- ▲ = R.R. SPK. FND.
- △ = R.R. SPK. SET
- ◆ = P.K. NAIL FND.

I.P. Set are 13/16" I.D. iron pipe with cap inscribed EMHT INC



GRAPHIC SCALE
 (IN FEET)

Basis of Bearings:
 The bearing shown hereon are based on the bearing of South 00° 05' 22" East for the westerly line of Lot No. 477 as delineated on the plat for "The Villages at West Chester - Section 8" of record in Plat Book 99, Page 50.

L:\CADD\DATA\1\SURVEY\PROJECT\20041667\DWG\141667BY.DWG<1117 LAND HP5000 - DIETZ DRIVE> - NO XREFS - PLOTTED BY: JPEARSALL - MONDAY, SEP 27 2004 - 10:55:53 AM