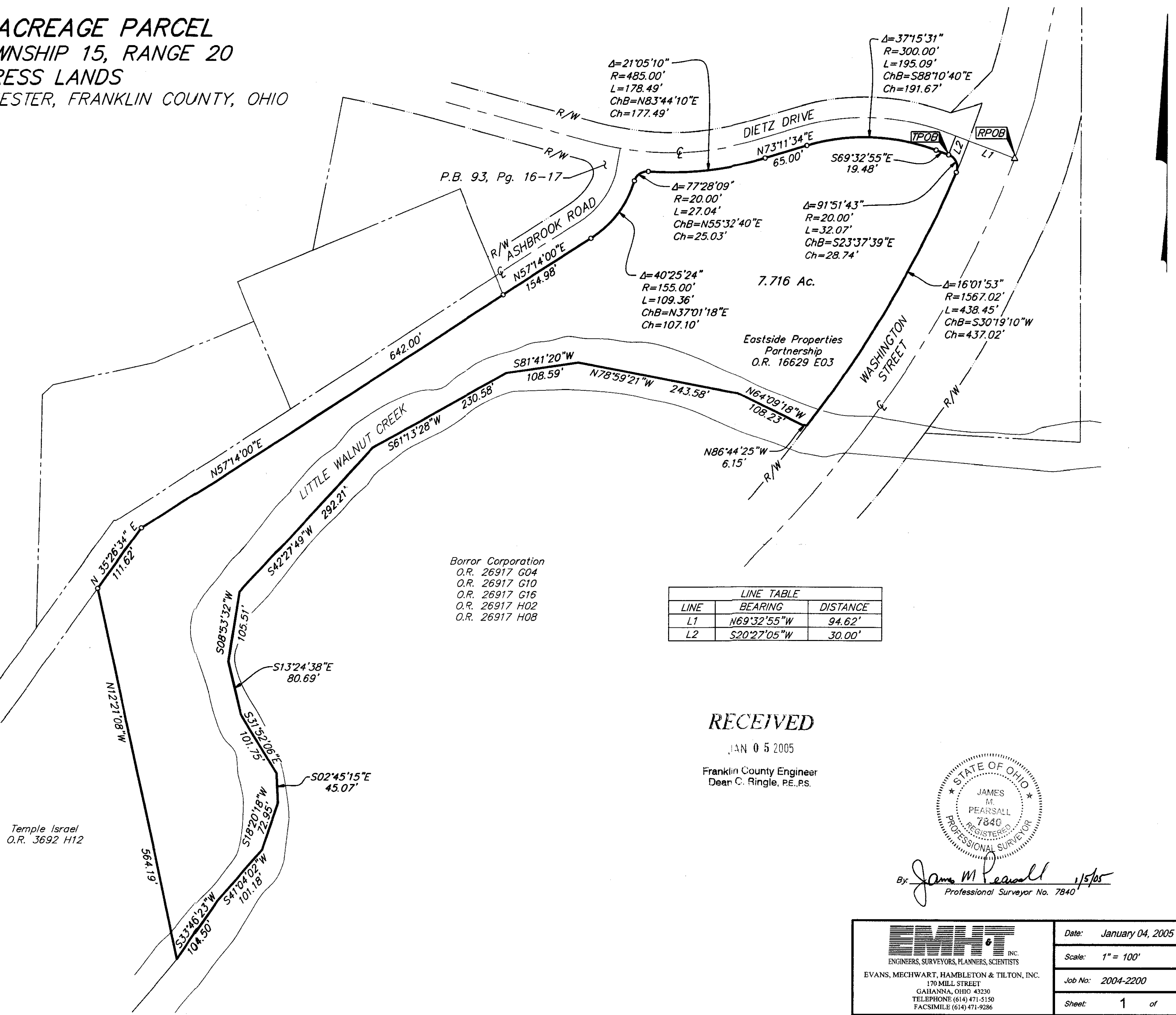


SURVEY OF ACREAGE PARCEL
SECTION 31, TOWNSHIP 15, RANGE 20
CONGRESS LANDS
 VILLAGE OF CANAL WINCHESTER, FRANKLIN COUNTY, OHIO

I:\CH\DATA\1\SURVEY\PROJECT\20042200\DWG\42200B\2.DWG<42200B\2> -- NO XREFS -- PLOTTED BY: TWEBB -- TUESDAY, JAN 4 2005 -- 4:32:02 PM



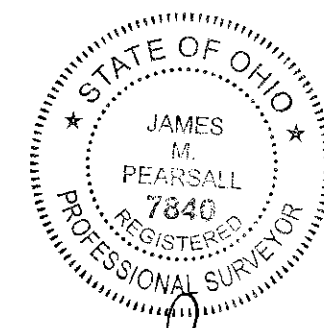
Borror Corporation
 O.R. 26917 G04
 O.R. 26917 G10
 O.R. 26917 G16
 O.R. 26917 H02
 O.R. 26917 H08

LINE	BEARING	DISTANCE
L1	N69°32'55"W	94.62'
L2	S20°27'05"W	30.00'

RECEIVED

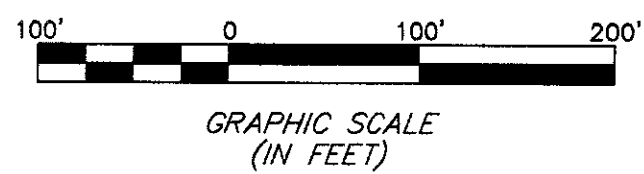
JAN 05 2005

Franklin County Engineer
 Dean C. Ringle, P.E., P.S.



By: *James M. Pearsall* 1/5/05
 Professional Surveyor No. 7840

- = STONE FND.
 - = MON. FND.
 - = I.P. FND.
 - = I.P. SET
 - = MAG. NAIL FND.
 - = MAG. NAIL SET
 - ▲ = R.R. SPK. FND.
 - △ = R.R. SPK. SET
 - = P.K. NAIL FND.
- I.P. Set are 13/16" I.D. iron pipe with cap inscribed EMHT INC



BASIS OF BEARINGS: The Bearings shown on this drawing are based on the same meridian as a portion of the centerline of Gender Road, having a bearing of N00°37'53"W, as shown on the recorded plat entitled "The Villages At Westchester Section 1, Phase 1, of record in Plat Book 75, Pages 28 and 29, Recorder's Office, Franklin County, Ohio

 ENGINEERS, SURVEYORS, PLANNERS, SCIENTISTS EVANS, MECHWART, HAMBLETON & TILTON, INC. 170 MILL STREET GAHANNA, OHIO 43230 TELEPHONE: (614) 471-5150 FACSIMILE: (614) 471-9286	Date: January 04, 2005
	Scale: 1" = 100'
	Job No: 2004-2200
	Sheet: 1 of 1
REVISIONS	
MARK	DATE DESCRIPTION