



ENGINEERS, SURVEYORS, PLANNERS, SCIENTISTS
 EVANS, MECHWART, HAMBLETON & TILTON, INC.
 170 MILL STREET, GAHANNA, OHIO 43230
 TELEPHONE (614) 471-5150 - FACSIMILE (614) 471-9286

SURVEY OF ACREAGE PARCEL SECTION 25, TOWNSHIP 11, RANGE 21 CONGRESS LANDS

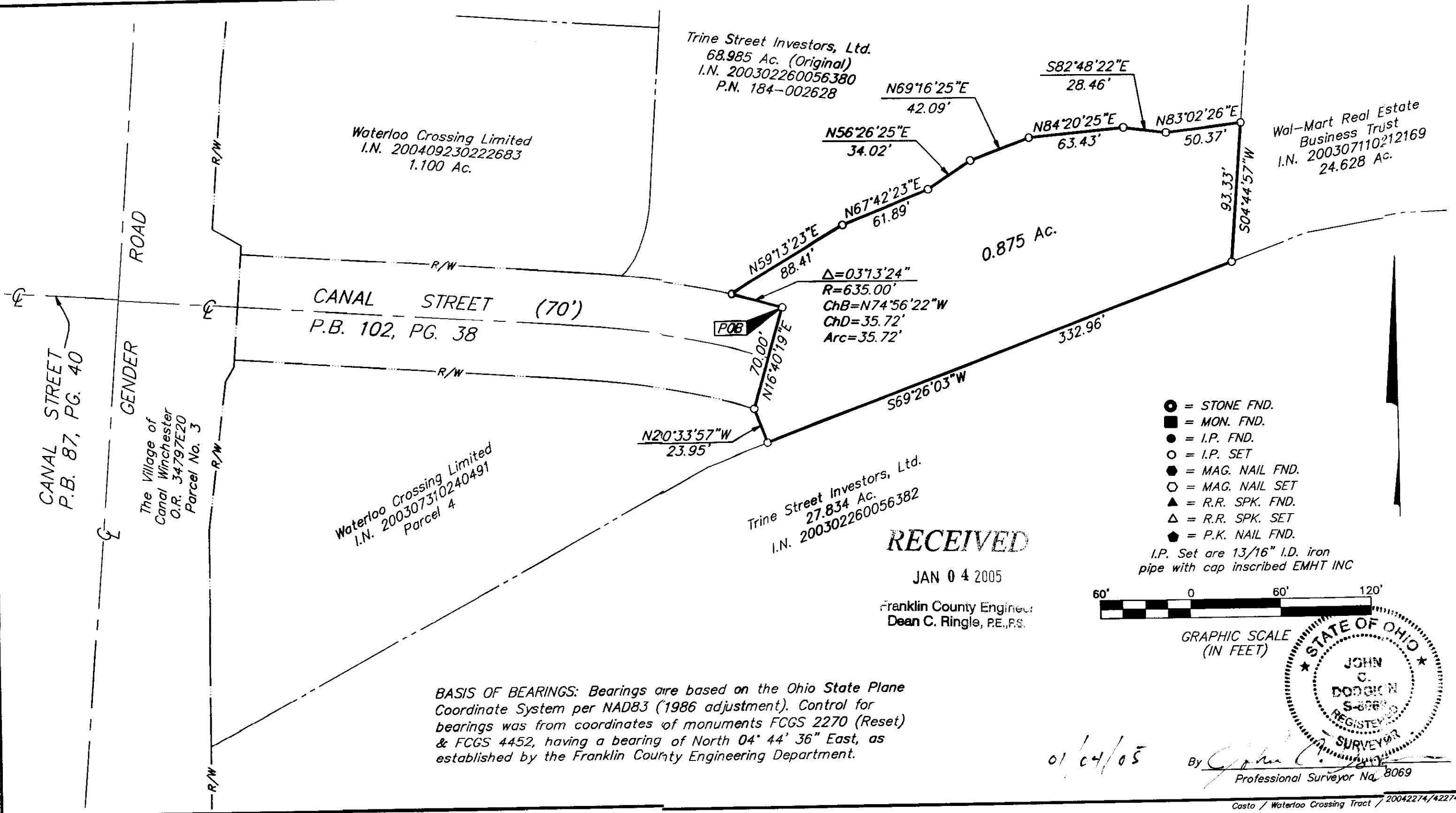
VILLAGE OF CANAL WINCHESTER, FRANKLIN COUNTY, OHIO

Date: January 4, 2005

Scale: 1" = 60'

Job No: 2004-2274

\COMHDAT\1\SURVEY\PROJ\20042274\DWG\42274B3.DWG:42274B3.DWG:11/17/04 10:30:18 AM
 - NO XREFS - PLOTTED BY: JBUISHBY - TUESDAY, JAN 4 2005 - 10:30:18 AM



BASIS OF BEARINGS: Bearings are based on the Ohio State Plane Coordinate System per NAD83 (1986 adjustment). Control for bearings was from coordinates of monuments FCGS 2270 (Reset) & FCGS 4452, having a bearing of North 04° 44' 36" East, as established by the Franklin County Engineering Department.