

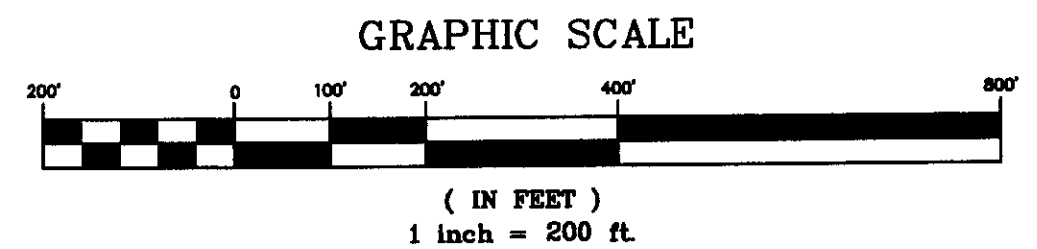
**SURVEY OF ACREAGE PARCEL
LOCATED IN
SECTION 13, TOWNSHIP 11, RANGE 21
CONGRESS LANDS
CITY OF COLUMBUS, FRANKLIN COUNTY, OHIO**

LEGEND

- Iron Pin Found ○ Iron Pin Set W/Cap
- ✕ PK Nail Found ✕ PK Nail Set
- ▲ RR Spike Found △ RR Spike Set
- Ⓜ Monument Box Ⓜ Monument

All iron pins set are 3/4" diameter, 30" long with plastic cap inscribed "Advanced 7661".

The Basis of Bearings shown hereon was transferred from a GPS survey of Franklin County Monuments FCGS 2251, FCGS 9957, FCGS 9936, 10-693 and FCGS 9947 performed by the Franklin County Engineer's Office in 1991, and is based upon the NAD83 Ohio State Plane Coordinate System, South Zone, and determines the centerline of Gender Road as N 04° 06' 56" W south of Section 13.



Clark E. White
CLARK E. WHITE
 P.S. NO. 7868 DATE: _____

**BOUNDARY
SURVEY
FOR
WHITE OAK
DEVELOPMENT**

PLAN PREPARED BY:

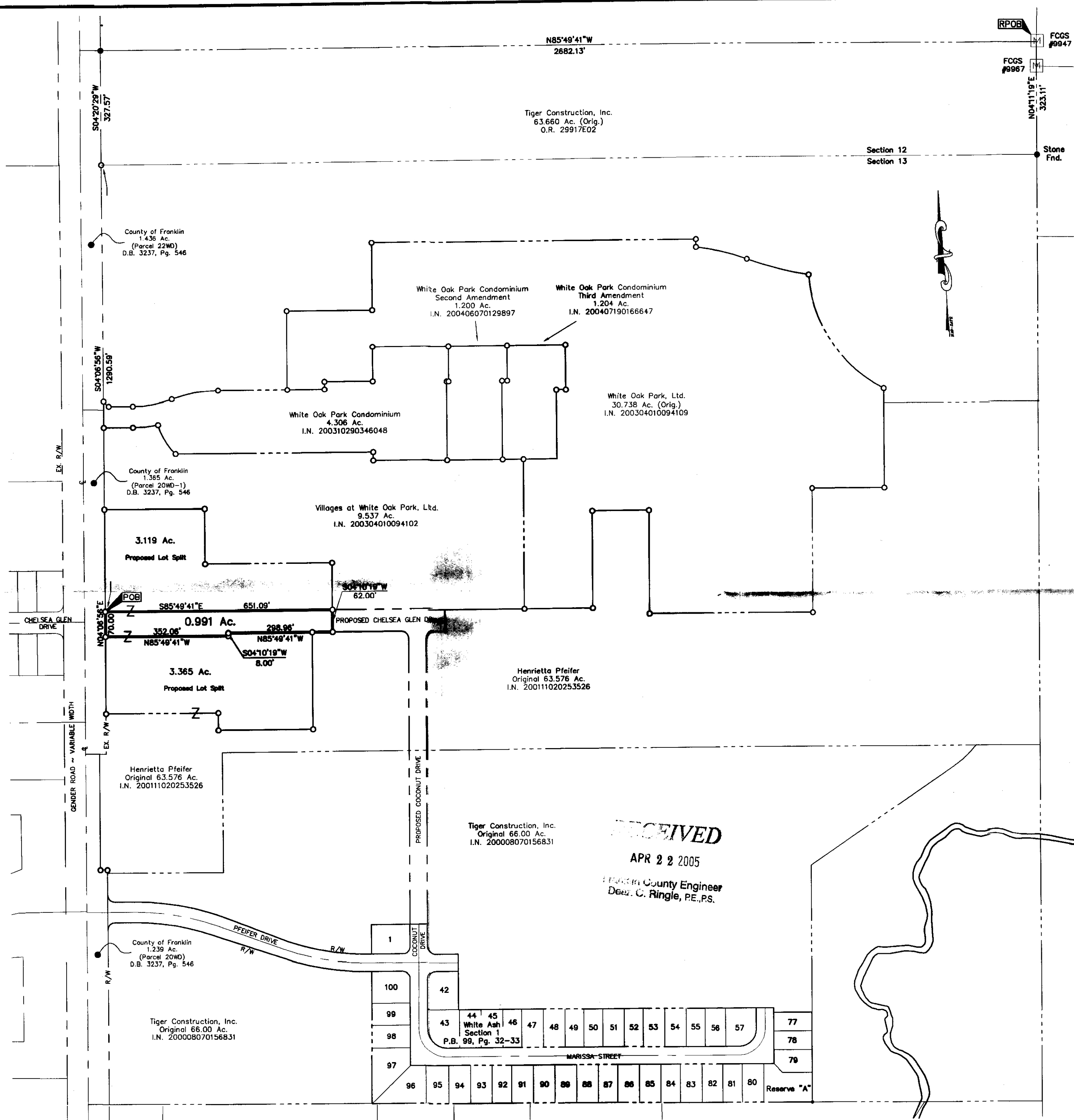
**ADVANCED
CIVIL DESIGN**
 ENGINEERS SURVEYORS

4605 Morse Road
 Suite 101
 Columbus, Ohio 43230
 ph 614.428.7750
 fax 614.428.7755

SCALE: 1" = 200'
 DATE: 04/20/2005

SHEET 1 / 1

Z:\04-0006-13\DWG\0006-13-BOUND3.dwg sheet 1 Apr 21, 2005 4:42:15pm cwhite



RECEIVED
 APR 22 2005
 Franklin County Engineer
 Dea. C. Ringle, P.E., P.S.