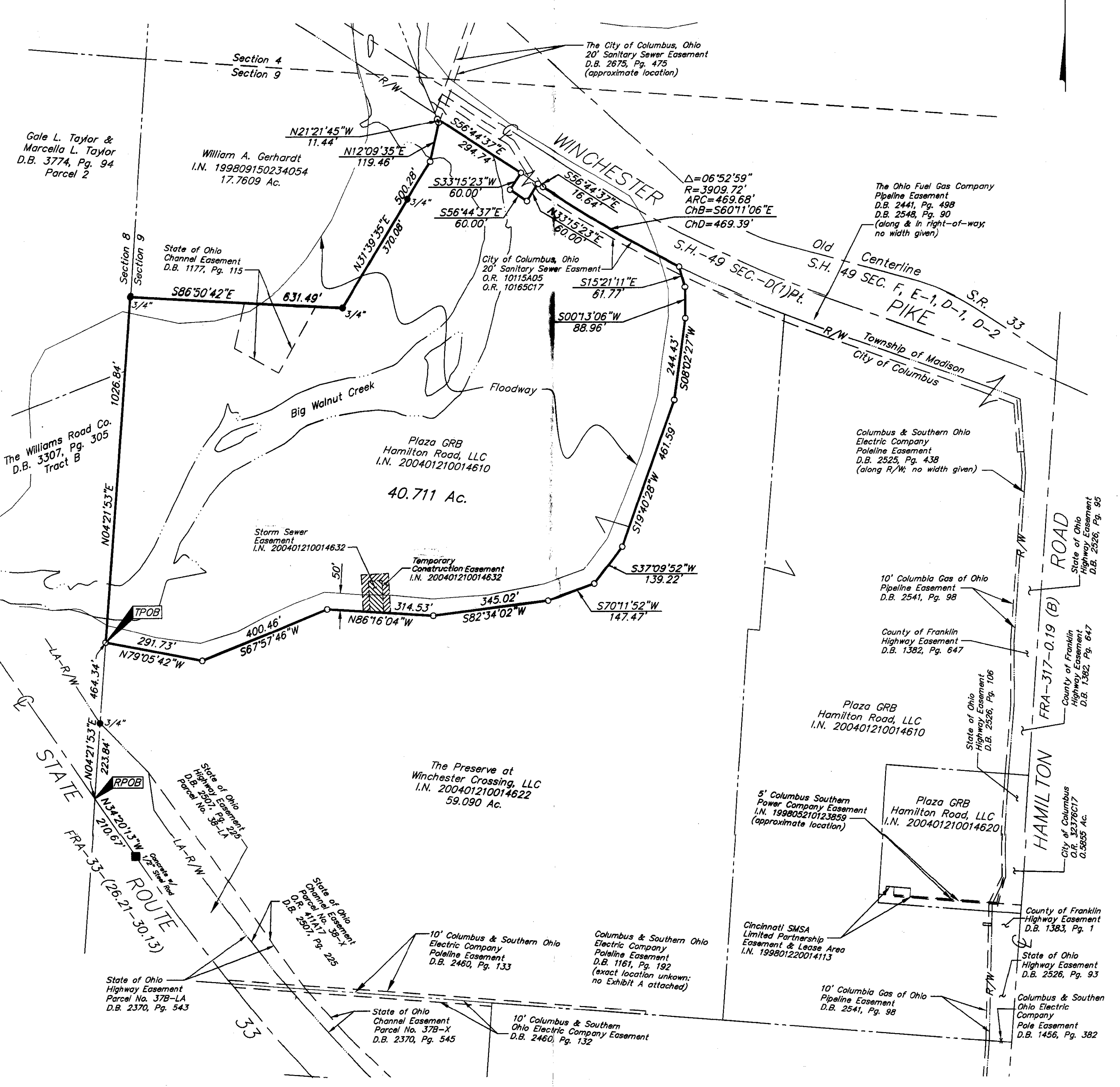


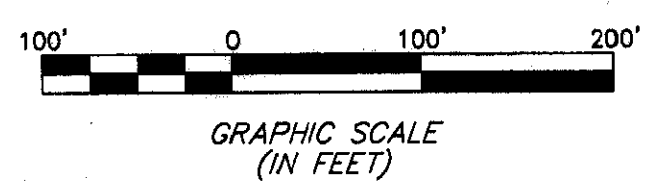
# SURVEY OF ACREAGE PARCEL SECTION 9, TOWNSHIP 11, RANGE 21 CONGRESS LANDS CITY OF COLUMBUS, FRANKLIN COUNTY, OHIO



**BASIS OF BEARINGS:** Bearings are based on N 57° 12' 05" W between monuments FRANK 132 & FRANK 32, per the Ohio State Plane Coordinate System NAD83, South Zone.

**Note:**  
This survey was updated in August 2004 to reflect changes in property ownership.

- = STONE FND.
  - = MON. FND.
  - = I.P. SET
  - = I.P. SET
  - = MAG. NAIL FND.
  - ▲ = R.R. SPK. FND.
  - ▲ = R.R. SPK. SET
  - ◆ = P.K. NAIL FND.
- I.P. Set are 13/16" I.D. iron pipe with cap inscribed EMHT INC



 ENGINEERS, SURVEYORS, PLANNERS, SCIENTISTS EVANS, MECHWART, HABLETON & TILTON, INC. 170 MILL STREET GAHANNA, OHIO 43230 TELEPHONE (614) 471-5150 FACSIMILE (614) 471-9286		Date: September 17, 2003
		Scale: 1" = 200'
		Job No: 20031300
		Sheet: 1 of 1
REVISIONS		
MARK	DATE	DESCRIPTION
JCD	1-16-04	Update Changes
JCD	1-27-04	Update Changes
JCD	8-12-04	Update Ownership

By: \_\_\_\_\_  
Professional Surveyor No. 8069