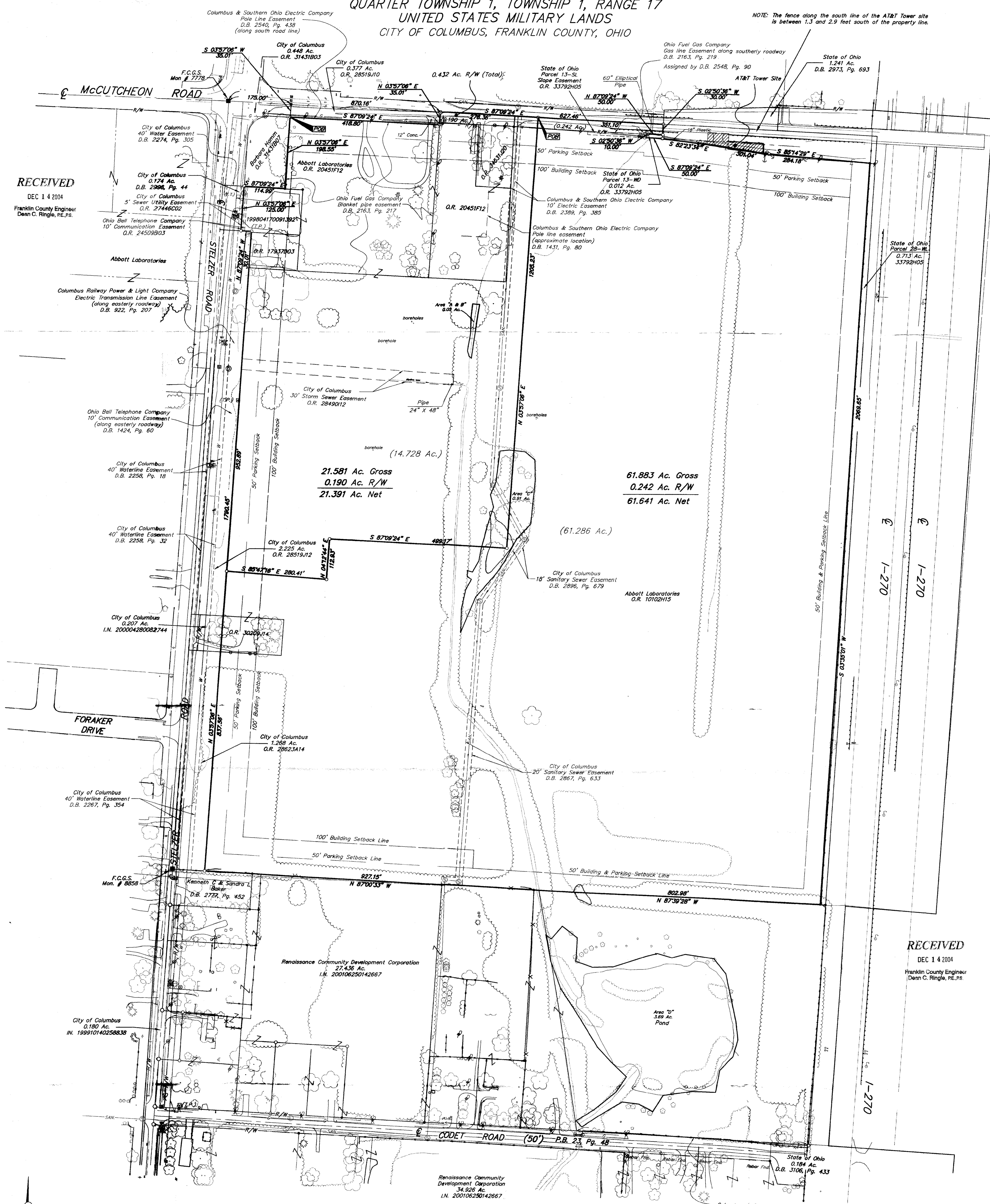


SURVEY OF ACREAGE PARCEL
QUARTER TOWNSHIP 1, TOWNSHIP 17, RANGE 17
UNITED STATES MILITARY LANDS
CITY OF COLUMBUS, FRANKLIN COUNTY, OHIO

NOTE: The fence along the south line of the AT&T Tower site is between 1.3 and 2.9 feet south of the property line.

RECEIVED
 DEC 14 2004
 Franklin County Engineer
 Dean C. Ringle, P.E., P.S.

RECEIVED
 DEC 14 2004
 Franklin County Engineer
 Dean C. Ringle, P.E., P.S.



21.581 Ac. Gross
 0.190 Ac. R/W
 21.391 Ac. Net

61.883 Ac. Gross
 0.242 Ac. R/W
 61.641 Ac. Net

UTILITY STATEMENT:
 The underground utilities shown hereon have been located from field survey information and existing drawings. The surveyor makes no guarantee that the underground utilities shown comprise all such utilities in the area, either in service or abandoned. The surveyor further does not warrant that the underground utilities shown are in the exact location indicated although he does certify that they are located as accurately as possible from information available.

Note: All topographic information shown hereon is from aerial photography.

LEGEND

— = Guy Wire	— W — = Water Line
⊙ = Utility Pole	— G — = Gas Line
⊙ = Power Pole	— STM — = Storm Line
⊙ = Telephone Pole	⊙ = Storm Manhole
⊙ = Gas Marker	⊙ = Sanitary Manhole
⊙ = Gas Meter	⊙ = Sanitary Line
(E.T.) = Electric Transformer	— USE — = Underground Electric
(T.P.) = Telephone Pedestal	— DHE — = Overhead Electric
w = Water Well	— UST — = Underground Telephone
⊙ = Fire Hydrant	— T — = Overhead Telephone
⊙ = Water Valve	— CATV — = Cable TV
⊙ = Catch Basin	— C — = Centerline
— = Fence	— R/W — = Right of Way Line
⊙ = Light pole	— EOL — = Edge of Cop

BASES OF BEARINGS: Bearings are based on the Ohio State Plane Coordinate System as per HAD023 Control for bearings was from coordinates of monuments 7778 & 8855, having a bearing of South 03°57'06" West, established by the Franklin County Engineering Department, using Global Positioning System procedures and equipment.

LEGEND

— = Guy Wire	— W — = Water Line
⊙ = Utility Pole	— G — = Gas Line
⊙ = Power Pole	— STM — = Storm Line
⊙ = Telephone Pole	⊙ = Storm Manhole
⊙ = Gas Marker	⊙ = Sanitary Manhole
⊙ = Gas Meter	⊙ = Sanitary Line
(E.T.) = Electric Transformer	— USE — = Underground Electric
(T.P.) = Telephone Pedestal	— DHE — = Overhead Electric
w = Water Well	— UST — = Underground Telephone
⊙ = Fire Hydrant	— T — = Overhead Telephone
⊙ = Water Valve	— CATV — = Cable TV
⊙ = Catch Basin	— C — = Centerline
— = Fence	— R/W — = Right of Way Line
⊙ = Light pole	— EOL — = Edge of Cop

The following items from Title Commitment No. 23160558 COM could not be positively located from the description provided:
 D.B. 946, Pg. 145
 D.B. 2122, Pg. 218

The following items from Title Commitment No. 23160558 COM are not located on the subject parcel:
 D.B. 43, Pg. 70
 D.B. 2267, Pg. 354
 D.B. 23, Pg. 54
 D.B. 1304, Pg. 260
 D.B. 2267, Pg. 354
 D.B. 2258, Pg. 32
 D.B. 2250, Pg. 18
 D.B. 1424, Pg. 60
 D.B. 922, Pg. 207
 D.B. 1424, Pg. 60
 D.B. 2793, Pg. 549 (expired)
 O.R. 17398805

Building setback lines & utility easements within the plot of record in P.B. 43, Pg. 70 and P.B. 23, Pg. 54 are not located within the subject parcel.

CERTIFICATION: (Commitment No. 23160558 COM)
 To: M/I Homes of Central Ohio, LLC, & Chicago Title Insurance Company
 This is to certify, to the best of my knowledge, information and belief, that this map and the survey on which it is based were made in accordance with "Minimum Standard Detail Requirements for ALTA/ACSM and NSPS in 1999," and included items 1, 3, 4, 5, 6, 8, 11, & 13 of Table A "Optional Survey Responsibilities & Specification" thereof, and pursuant to the Accuracy Standards as adopted by ALTA, ACSM & NSPS in effect on the date of this certification. The survey measurements were made in accordance with the "Minimum Angle, Distance, and Closure Requirements for Survey Measurements which Control Land Boundaries for ALTA/ACSM Land Title Surveys."

By: *Jeffrey Miller*
 Registered Professional Surveyor No. 7211
 STATE OF OHIO
 REGISTERED PROFESSIONAL SURVEYOR

SCALE: AS SHOWN
 DATE: JUNE 6, 2000
 REVISION: JUNE 26, 2000
 REVISION: APRIL 28, 2003
 REVISION: NOVEMBER 21, 2003
 REVISION: FEBRUARY 9, 2004
 REVISION: MARCH 6, 2004

According to the Federal Emergency Management Agency's Flood Insurance Rate Map (dated August 2, 1995), the subject parcel shown hereon lies within Zone X (areas determined to be outside 500-year flood plain). Community Panel Nos. 39049C0170C, 39049C0169C and 39049C0167C.

G:\PROJECTS\2003\783\DWG\17782871 - March 4, 2004 - 10:10 AM

