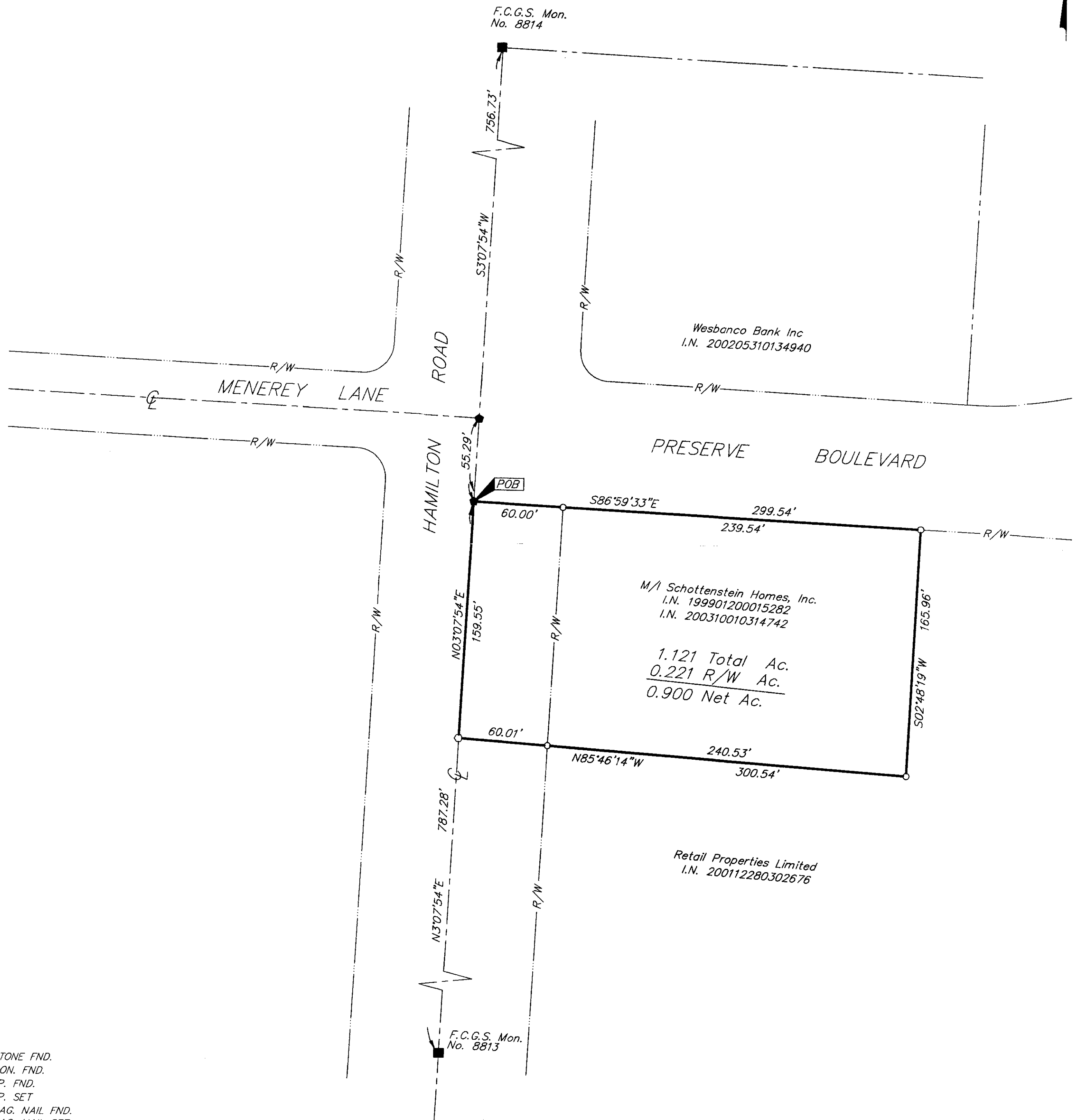


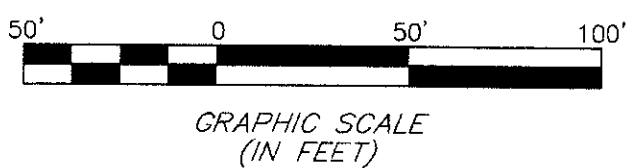
SURVEY OF ACREAGE PARCEL
QUARTER TOWNSHIP 3, TOWNSHIP 2, RANGE 16
UNITED STATES MILITARY LANDS
CITY OF COLUMBUS, FRANKLIN COUNTY, OHIO



- = STONE FND.
- = MON. FND.
- = I.P. FND.
- = I.P. SET
- = MAG. NAIL FND.
- = MAG. NAIL SET
- ▲ = R.R. SPK. FND.
- △ = R.R. SPK. SET
- ◆ = P.K. NAIL FND.

I.P. Set are 13/16" I.D. iron pipe with cap inscribed EMHT INC

The basis of bearing for this drawing is North $3^{\circ}07'54''$ East for the centerline of Hamilton Road between Franklin County Geodetic Survey Monument Numbers 8814 and 8813.



By: *Jeffrey A. Miller* 1-11-05
Professional Surveyor No. 7211



 EMHT INC. ENGINEERS, SURVEYORS, PLANNERS, SCIENTISTS EVANS, MECHWART, HAMBLETON & TILTON, INC. 170 MILL STREET GAHANNA, OHIO 43230 TELEPHONE (614) 471-5150 FACSIMILE (614) 471-9286		Date: JANUARY 10, 2005
		Scale: 1" = 50'
		Job No: 2003-1330
		Sheet: 1 of 1
REVISIONS		
MARK	DATE	DESCRIPTION

I:\CMHDATA\1\SURVEY\PROJECT\20031330\DWG\31330BV6.DWG<18X24 PORTRAIT> -- NO XREFS -- PLOTTED BY: JMACLEAN -- MONDAY, JAN 10 2005 -- 2:10:21 PM