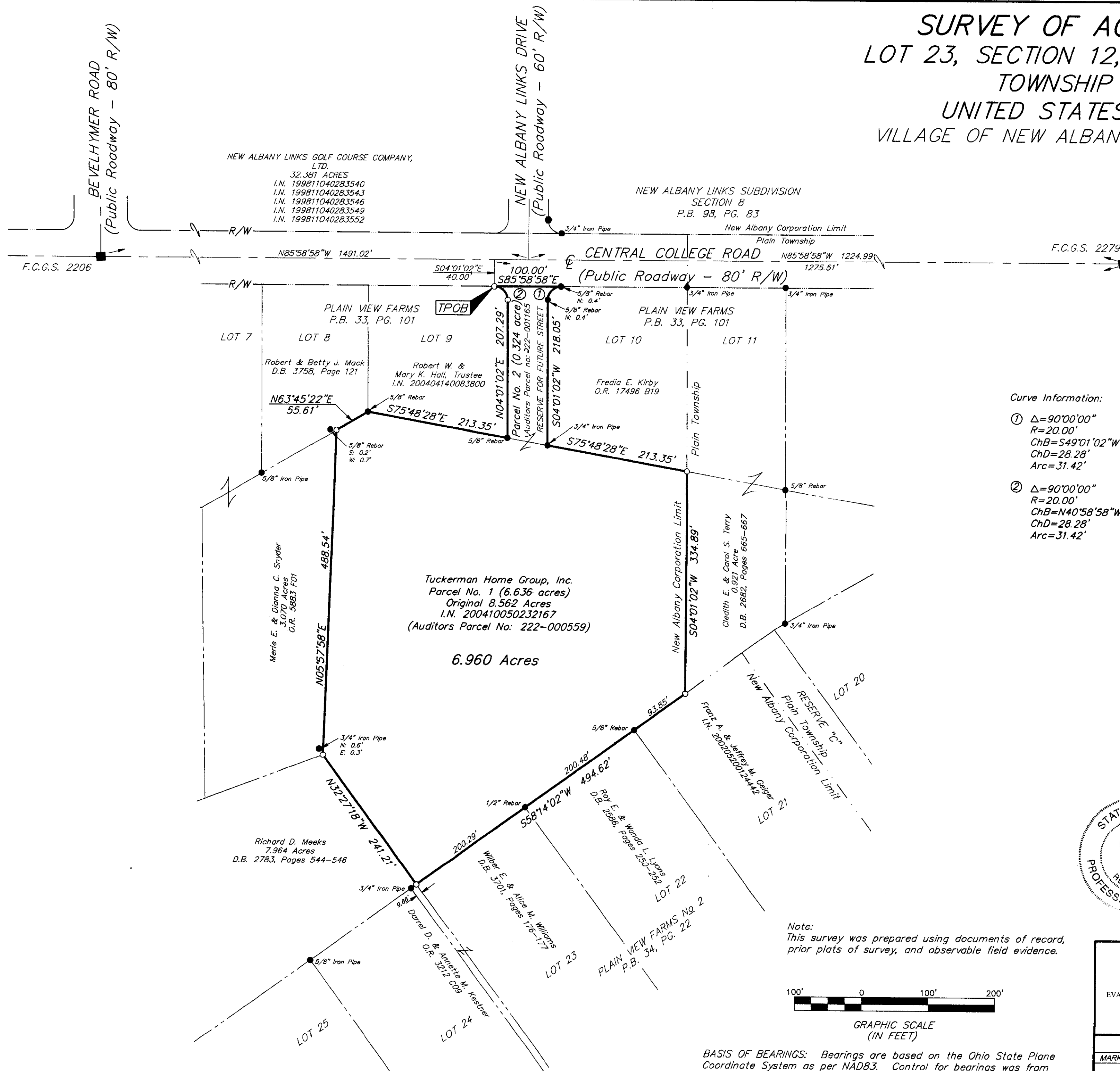


SURVEY OF ACREAGE PARCELS
LOT 23, SECTION 12, QUARTER TOWNSHIP 1,
TOWNSHIP 2, RANGE 16
UNITED STATES MILITARY LANDS
VILLAGE OF NEW ALBANY, FRANKLIN COUNTY, OHIO



Curve Information:

① $\Delta=90^{\circ}00'00''$
 $R=20.00'$
 $ChB=S49^{\circ}01'02''W$
 $ChD=28.28'$
 $Arc=31.42'$

② $\Delta=90^{\circ}00'00''$
 $R=20.00'$
 $ChB=N40^{\circ}58'58''W$
 $ChD=28.28'$
 $Arc=31.42'$

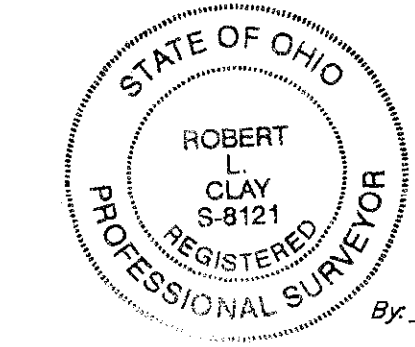
- = Landmark
 - = STONE FND.
 - = MON. FND.
 - = I.P. FND.
 - = I.P. SET
 - = MAG. NAIL FND.
 - = MAG. NAIL SET
 - = R.R. SPK. FND.
 - = R.R. SPK. SET
 - = P.K. NAIL FND.
- I.P. Set are 13/16" I.D. iron pipe with cap inscribed EMHT INC

RECEIVED

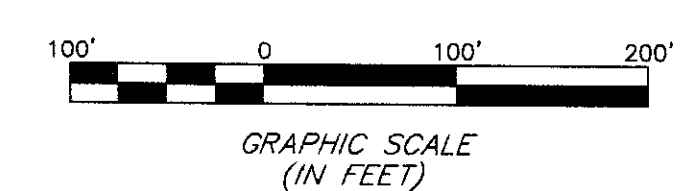
JAN 24 2005

Franklin County Engineer
 Dean G. Bingle, P.E., P.S.

By: *Robert L. Clay* January 21, 2005
 Professional Surveyor No. 8121



Note:
 This survey was prepared using documents of record, prior plats of survey, and observable field evidence.



BASIS OF BEARINGS: Bearings are based on the Ohio State Plane Coordinate System as per NAD83. Control for bearings was from coordinates of monuments 2206 & 2207, having a bearing of North $03^{\circ}23'06''$ East, between said monuments, established by the Franklin County Engineering Department, using Global Positioning System procedures and equipment.

 ENGINEERS, SURVEYORS, PLANNERS, SCIENTISTS EVANS, MECHWART, HAMBLETON & TILTON, INC. 170 MILL STREET GAHANNA, OHIO 43230 TELEPHONE (614) 471-5150 FACSIMILE (614) 471-9286		Date:	January 12, 2005
		Scale:	1" = 100'
		Job No:	2004-2161
		Sheet:	1 of 1
REVISIONS			
MARK	DATE	DESCRIPTION	

I:\OHIO\TA1\SURVEY\PROJECT\20042161\DWG\42161BV.DWG - 1:53:44 PM
 PLOTTED BY: JPLANTZ - FRIDAY, JAN 21 2005 - NO XREFS - LANDSCAPE - NO XREFS