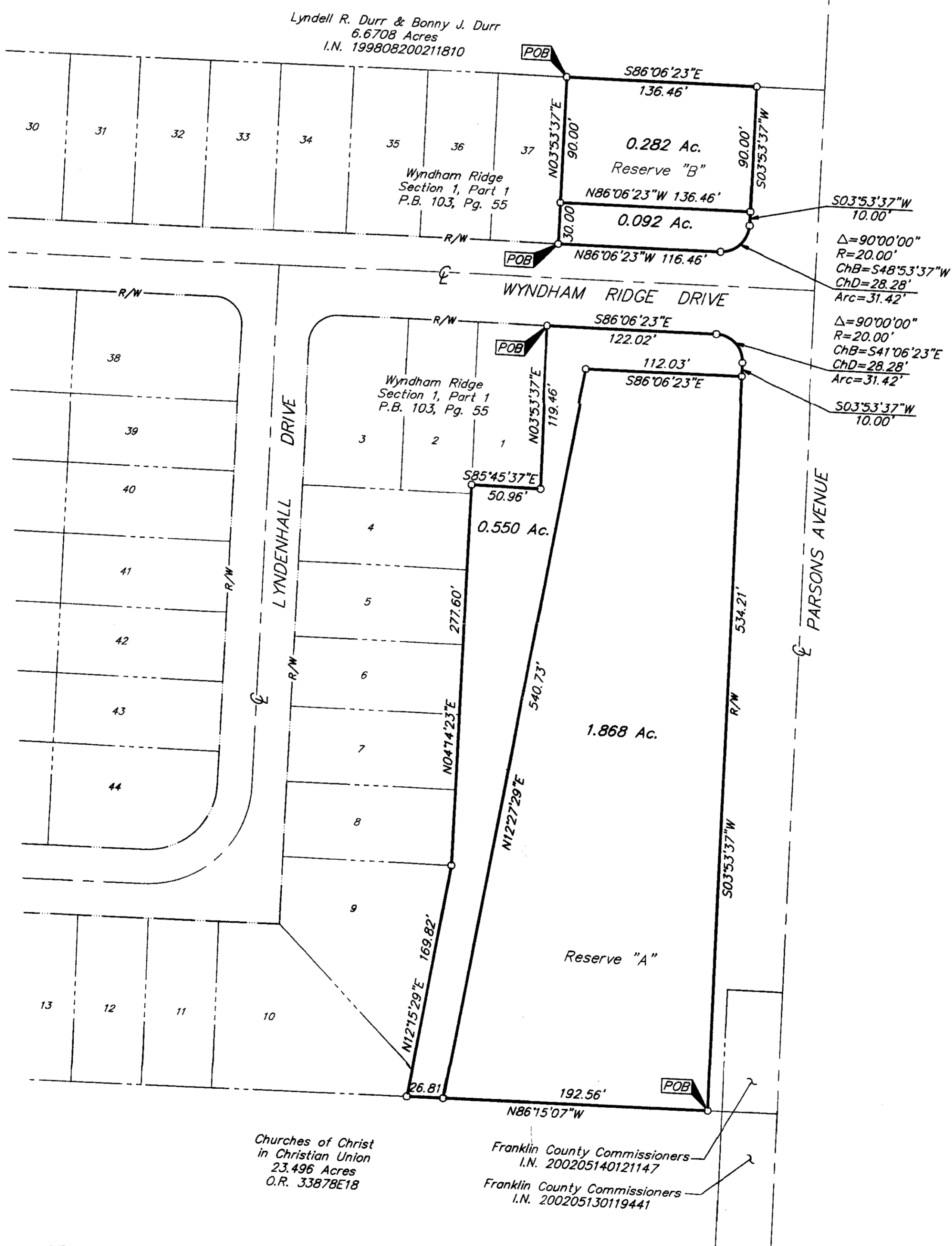
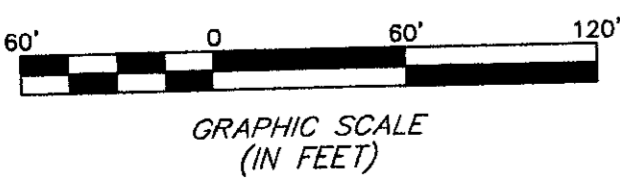


SURVEY OF ACREAGE PARCELS
SECTION 21, TOWNSHIP 4, RANGE 22
CONGRESS LANDS
 CITY OF COLUMBUS, FRANKLIN COUNTY, OHIO



RECEIVED
 DEC 03 2004
 Franklin County Engineer
 Dean C. Ringle, P.E., P.S.

- = STONE FND.
 - = MON. FND.
 - = I.P. FND.
 - = I.P. SET
 - = MAG. NAIL FND.
 - = MAG. NAIL SET
 - ▲ = R.R. SPK. FND.
 - △ = R.R. SPK. SET
 - = P.K. NAIL FND.
- I.P. Set are 1 3/16" I.D. iron pipe with cap inscribed EMHT INC



By: *[Signature]*
 Professional Surveyor No. 8250

ENGINEERS SURVEYORS PLANNERS SCIENTISTS EVANS, MECHWART, HAMBLETON & TILTON, INC. 170 MILL STREET GAHANNA, OHIO 43230 TELEPHONE (614) 471-5150 FACSIMILE (614) 471-9286		Date: November 30, 2004
		Scale: 1" = 60'
		Job No: 2004-2053
		Sheet: 1 of 1
REVISIONS		
MARK	DATE	DESCRIPTION

BASIS OF BEARINGS: Bearings are based on the plot of "Wyndham Ridge Section 1 Part 1", a subdivision of record in Plot Book 103, Page 55, with the centerline of Wyndham Ridge Drive being North 86° 06' 23" West as delineated thereon.

\\CMHDATA1\SURVEY\PROJECT\20042053\DWG\42053B\DWG\1824_PDF\PRINT7 - NO XREFS - PLOTTED BY: BSMITH - TUESDAY, NOV 30 2004 - 3:59:34 PM