

SURVEY OF LOTS 90, 91 AND PART OF LOT 89
COLUMBUS TERRACE
Village of Obetz, Franklin County, Ohio

Date: December 29th, 2003

Scale 1" = 20'

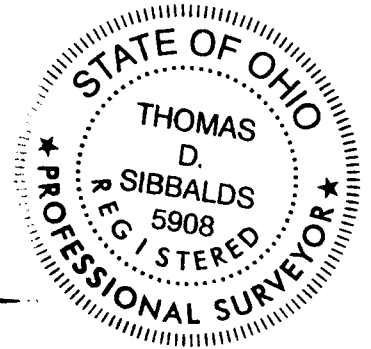
○ = Iron Pin Set

● = Iron Pin Found

Village of Obetz
Lot Split
APPROVED

SEP 28 2005

Obetz, Ohio
By: *John W. Oble*
Village Engineer

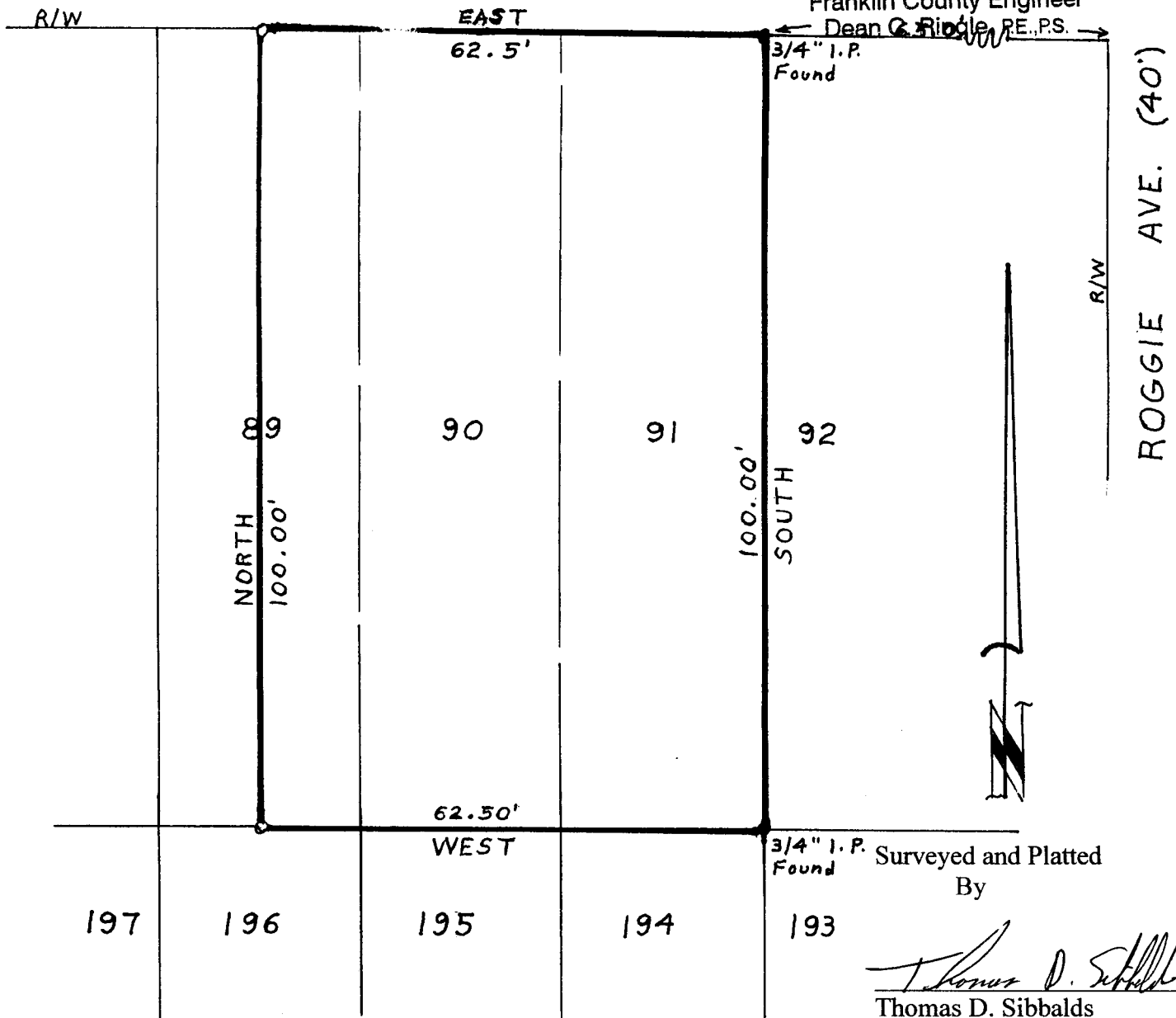


OBETZ AVE. (50')

RECEIVED

OCT 28 2005

Franklin County Engineer
Dean G. Riddle, RE., P.S.



BASIS OF BEARINGS

Bearings shown hereon are based on the bearing of Obetz Ave. being assumed as WEST. All other Bearings are relative thereto.

3/4" I.P. Found
Surveyed and Platted
By

Thomas D. Sibbalds
Thomas D. Sibbalds
Registered Surveyor No. 5908
7353 Coonpath Road
Carroll, Ohio 43112-9694
740-756-7370