

EMH&T

Evans, Mechwart, Hambleton & Tilton, Inc.
 Engineers • Surveyors • Planners • Scientists
 5500 New Albany Road, Columbus, OH 43054
 Phone: 614.775.4500 Fax: 614.775.4800

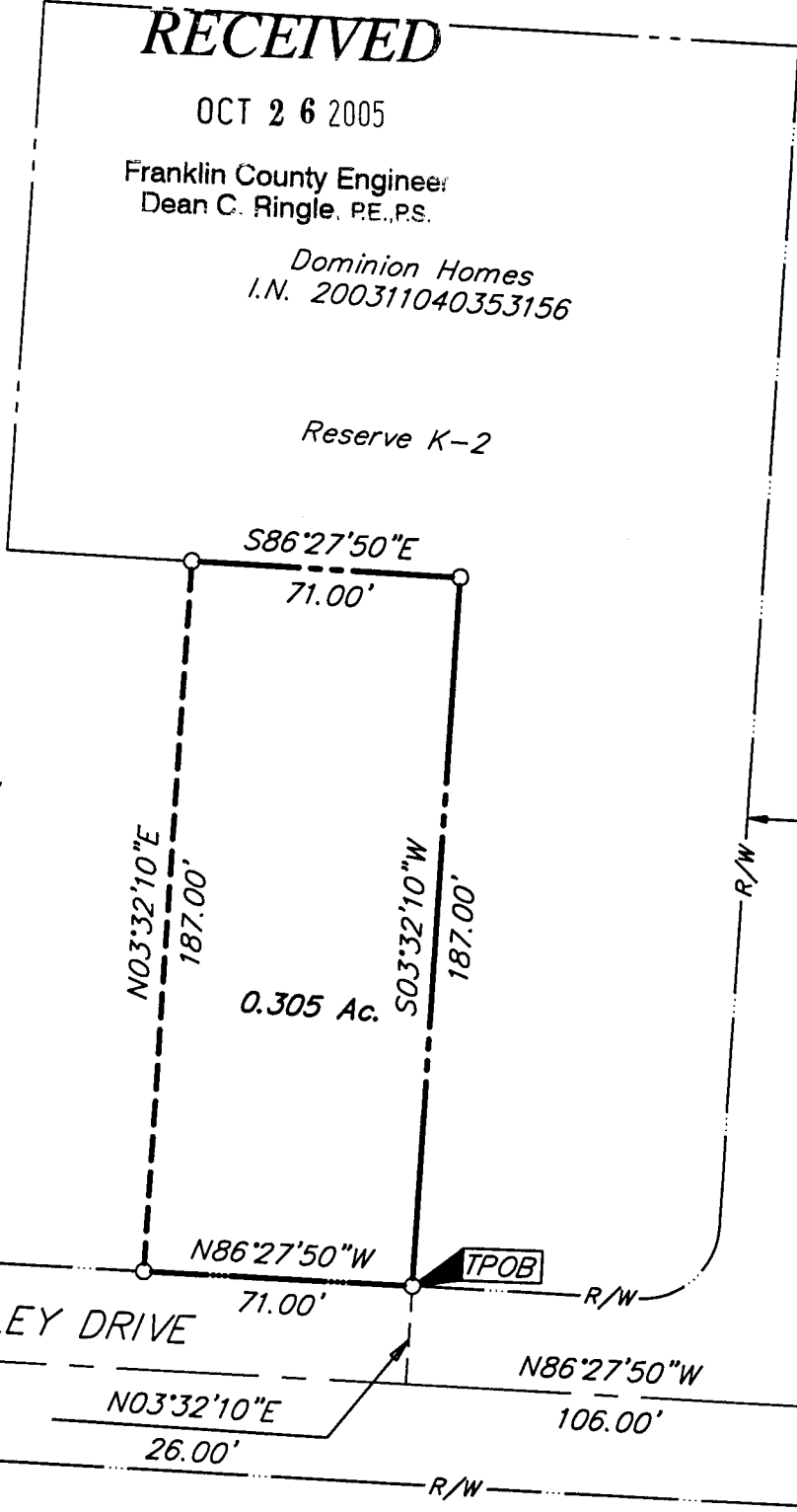
SURVEY OF ACREAGE PARCEL SECTION 15, TOWNSHIP 2, RANGE 16 UNITED STATES MILITARY DISTRICT CITY OF COLUMBUS, FRANKLIN COUNTY, OHIO

Date: October 24, 2005

Job No. 2005-2272

Scale: 1" = 50'

M C M X X V I



- = STONE FND.
- = MON. FND.
- = I.P. FND.
- = I.P. SET
- = MAG. NAIL FND.
- = MAG. NAIL SET
- ▲ = R.R. SPK. FND.
- △ = R.R. SPK. SET
- ◆ = P.K. NAIL FND.

I.P. Set are 13/16" I.D. iron pipe with cap inscribed EMHT INC

BASIS OF BEARINGS: Bearings are based on the Ohio State Plane Coordinate System per NAD83, (1986 adjustment). Control for bearings was from coordinates of monuments FCGS 8824 and FCGS 8825, having a calculated bearing of North 86° 29' 28" West, established by the Franklin County Engineering Department.



GRAPHIC SCALE (IN FEET)

By *John C. Duff*
 Professional Surveyor No. 8069



\\CMHDATA1\SURVEY\PROJECT\20052272\DWG\52272B1.DWG - LAST SAVED BY JDOOGON [10/25/2005 2:34:30 PM] - PLOTTED BY JDOOGON [10/25/2005 2:44:00 PM]