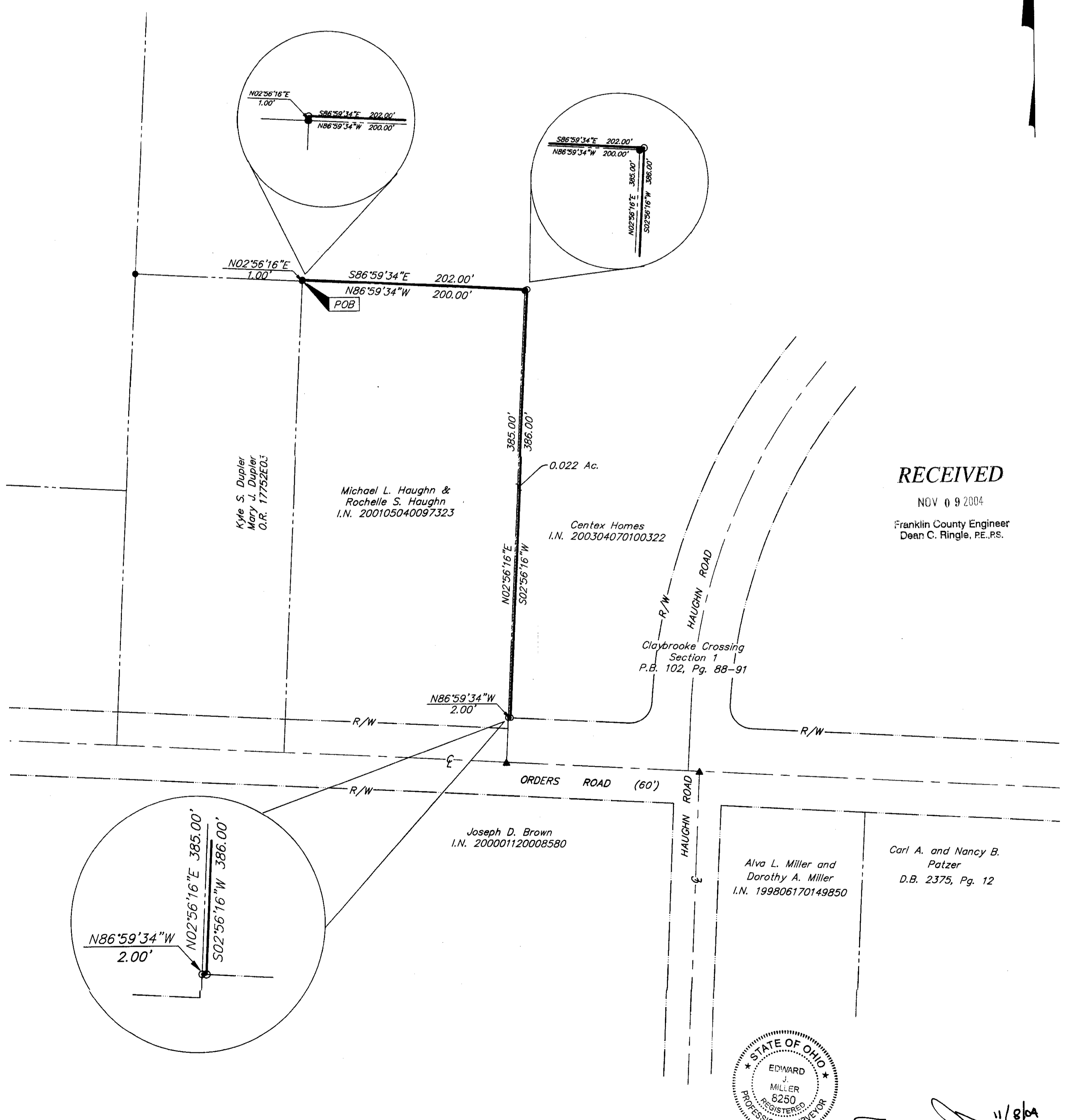
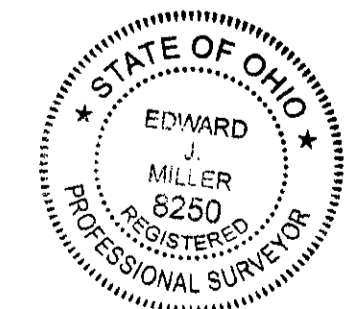


**SURVEY OF ACREAGE PARCEL
LOCATED IN
VIRGINIA MILITARY SURVEY NO. 1383
CITY OF GROVE CITY, FRANKLIN COUNTY, OHIO**



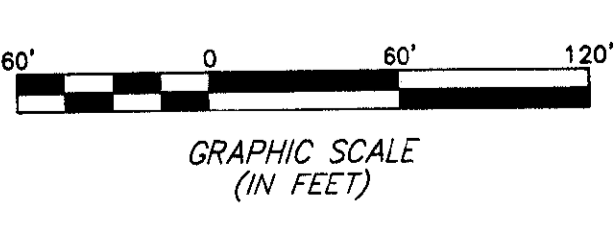
RECEIVED
NOV 09 2004
Franklin County Engineer
Dean C. Ringle, PE., PS.



By: *[Signature]*
Professional Surveyor No. 8250

- = STONE FND.
 - = MON. FND.
 - = I.P. FND.
 - = I.P. SET
 - = MAG. NAIL FND.
 - = MAG. NAIL SET
 - ▲ = R.R. SPK. FND.
 - △ = R.R. SPK. SET
 - = P.K. NAIL FND.
- I.P. Set are 13/16" I.D. Iron pipe with cap inscribed EMHT INC

BASIS OF BEARINGS: The bearings shown on this plot are based on a field traverse originating and tying to Franklin County survey control monuments, including Frank 25 and Frank 125 and are based on the Ohio State Plane Coordinate System, South Zone as per NAD 83.



		Date: September 10, 2003
EVANS, MECHWART, HAMBLETON & TILTON, INC. 170 MILL STREET GAHANNA, OHIO 43230 TELEPHONE (614) 471-5150 FACSIMILE (614) 471-9286		Scale: 1" = 60'
		Job No: 2004-00930
		Sheet: 1 of 1
REVISIONS		
MARK	DATE	DESCRIPTION
7B	11/3/04	markup

I:\CHANDATA\SURVEY\PROJECT\20020930\DWG\20930BVI.DWG<18X24 PORTRAT> - NO XREFS - PLOTTED BY: TBAXTER - WEDNESDAY, NOV 3 2004 - 9:13:19 AM