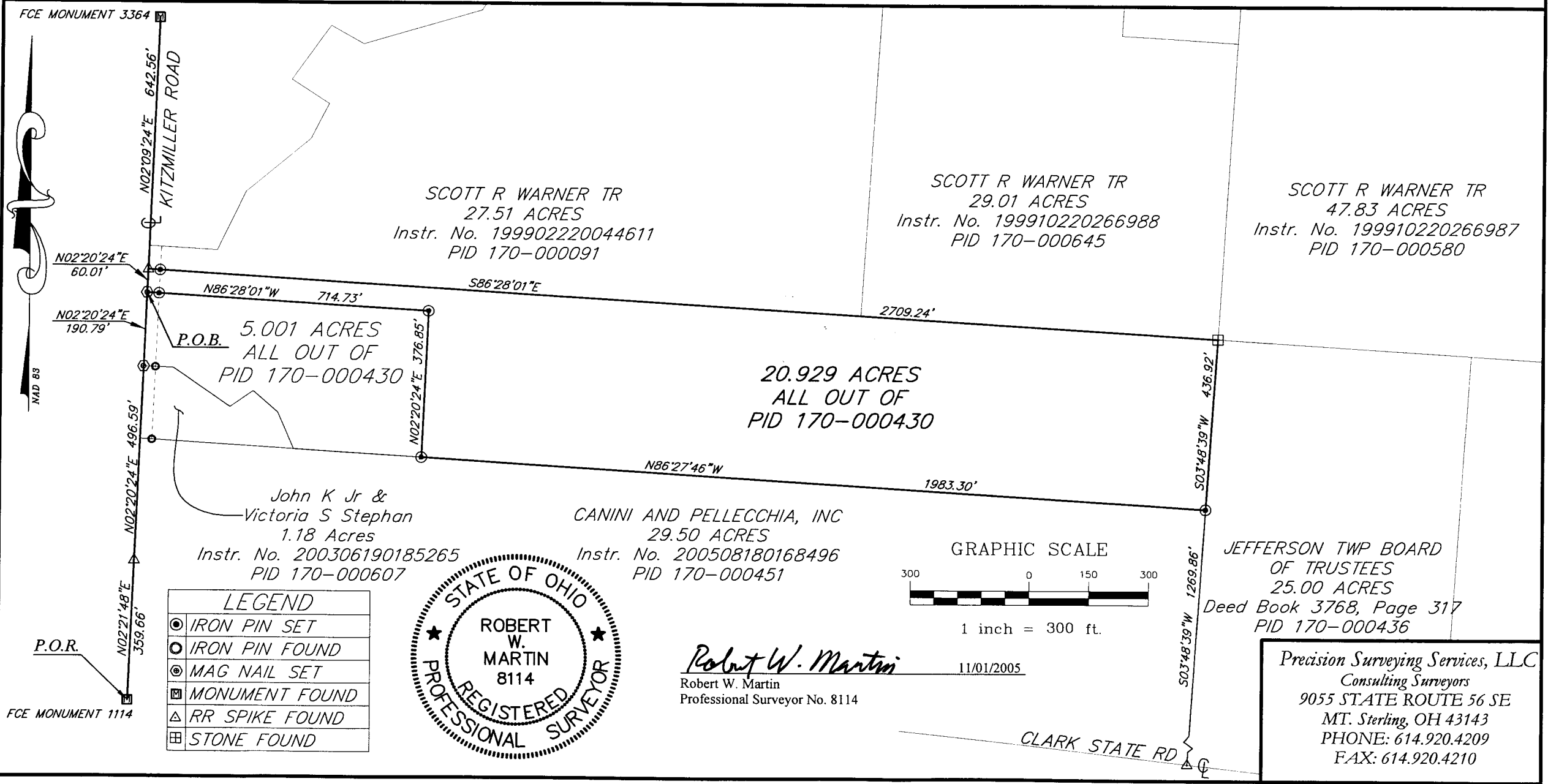


**EXHIBIT OF A 20.929 ACRE PARCEL**  
 State of Ohio, County of Franklin, Township of Jefferson  
 Part of Lot 31, Quarter Township 1, Township 1, Range 16, United States Military Lands



SCOTT R WARNER TR  
 27.51 ACRES  
 Instr. No. 199902220044611  
 PID 170-000091

SCOTT R WARNER TR  
 29.01 ACRES  
 Instr. No. 199910220266988  
 PID 170-000645

SCOTT R WARNER TR  
 47.83 ACRES  
 Instr. No. 199910220266987  
 PID 170-000580

P.O.B. 5.001 ACRES  
 ALL OUT OF  
 PID 170-000430

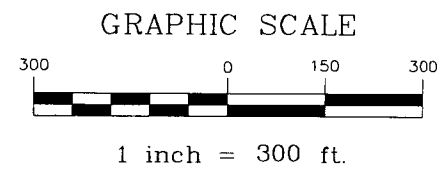
20.929 ACRES  
 ALL OUT OF  
 PID 170-000430

John K Jr &  
 Victoria S Stephan  
 1.18 Acres  
 Instr. No. 200306190185265  
 PID 170-000607

CANINI AND PELLECCIA, INC  
 29.50 ACRES  
 Instr. No. 200508180168496  
 PID 170-000451

JEFFERSON TWP BOARD  
 OF TRUSTEES  
 25.00 ACRES  
 Deed Book 3768, Page 317  
 PID 170-000436

LEGEND	
⊙	IRON PIN SET
⊚	IRON PIN FOUND
⊗	MAG NAIL SET
⊠	MONUMENT FOUND
△	RR SPIKE FOUND
⊞	STONE FOUND



*Robert W. Martin*  
 Robert W. Martin  
 Professional Surveyor No. 8114  
 11/01/2005

Precision Surveying Services, LLC  
 Consulting Surveyors  
 9055 STATE ROUTE 56 SE  
 MT. Sterling, OH 43143  
 PHONE: 614.920.4209  
 FAX: 614.920.4210

FCE MONUMENT 3364

FCE MONUMENT 1114

P.O.R.

NAD 83

NAD 83

NAD 83