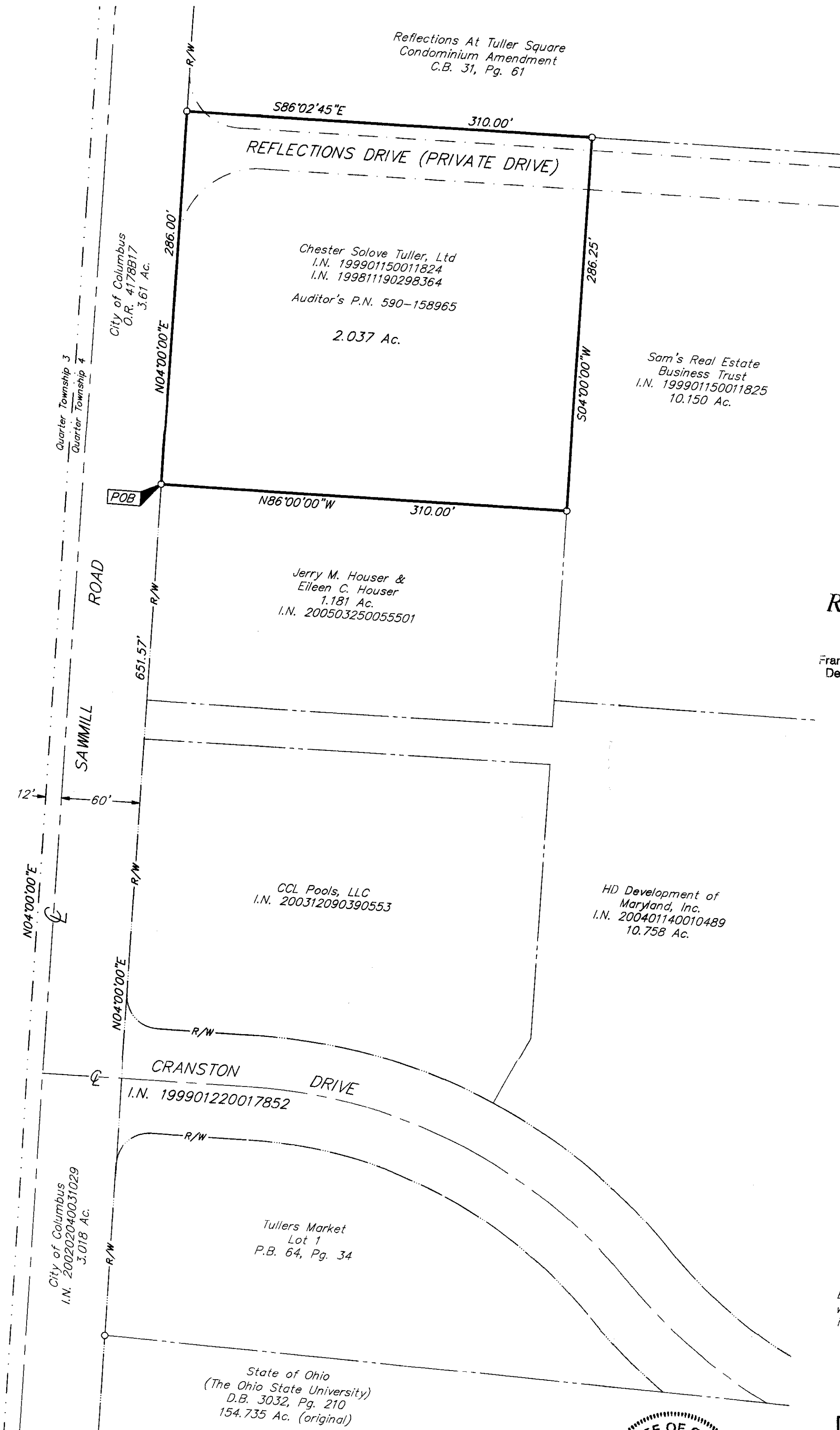


SURVEY OF ACREAGE PARCEL
QUARTER TOWNSHIP 4, TOWNSHIP 2, RANGE 19
UNITED STATES MILITARY LANDS
CITY OF COLUMBUS, FRANKLIN COUNTY, OHIO

*Reflections At Tuller Square
 Condominium Amendment
 C.B. 31, Pg. 61*



RECEIVED

JUN 28 2005

Franklin County Engineer
 Dean C. Ringle, P.E., P.S.

- = STONE FND.
 - = MON. FND.
 - = I.P. FND.
 - = I.P. SET
 - = MAG. NAIL FND.
 - = MAG. NAIL SET
 - ▲ = R.R. SPK. FND.
 - △ = R.R. SPK. SET
 - ◆ = P.K. NAIL FND.
- I.P. Set are 13/16" I.D. iron pipe with cap inscribed EMHT INC



GRAPHIC SCALE
(IN FEET)

BASIS OF BEARINGS: Bearings shown hereon are based on the west line of Quarter Township 4 (North 04° 00' 00" East) as shown in O.R. 1956G13.



By *John C. Dodgion*
 Professional Surveyor No. 8069

06/28/05

 ENGINEERS, SURVEYORS, PLANNERS, SCIENTISTS EVANS, MECHWART, HAMBLETON & TILTON, INC. 170 MILL STREET GAHANNA, OHIO 43230 TELEPHONE (614) 471-5150 FACSIMILE (614) 471-9286		Date: June 28, 2005
		Scale: 1" = 60'
		Job No: 2005-1348
		Sheet: 1 of 1
REVISIONS		
MARK	DATE	DESCRIPTION

\\CNHDATA1\SURVEY\PROJECT\20051348\DWG\51348BY.DWG (15/348BY) (6/28/2005 7:27:54 AM) - PLOTTED BY JBUSHBY [6/28/2005 7:28:57 AM]