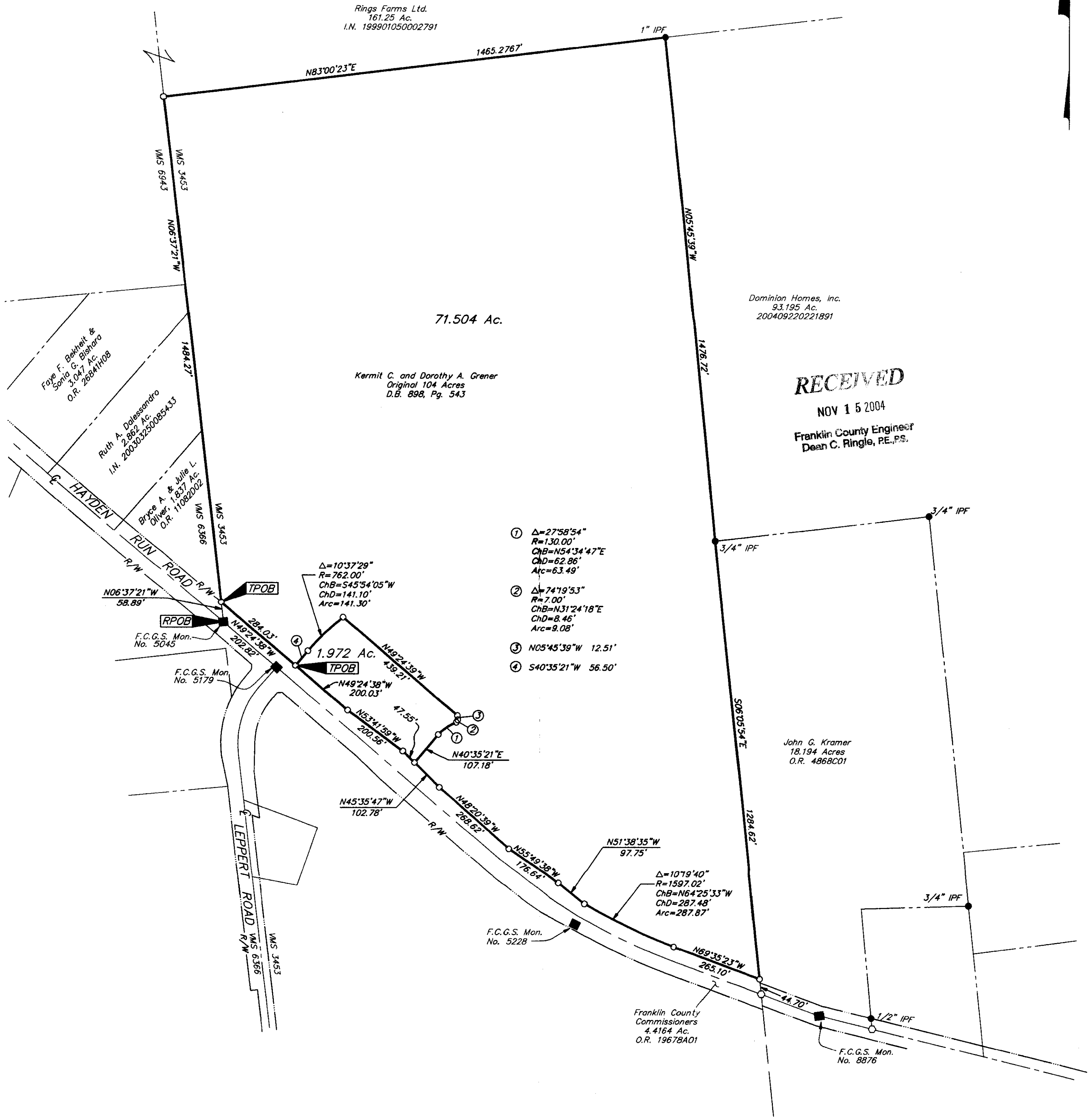


SURVEY OF ACREAGE PARCELS

VIRGINIA MILITARY SURVEY NO. 3453

CITY OF COLUMBUS, FRANKLIN COUNTY, OHIO



Rings Farms Ltd.
161.25 Ac.
I.N. 199901050002791

Dominion Homes, Inc.
93.195 Ac.
200409220221891

71.504 Ac.

Kermit C. and Dorothy A. Greer
Original 104 Acres
D.B. 898, Pg. 543

RECEIVED
NOV 15 2004
Franklin County Engineer
Dean C. Ringle, P.E., P.S.

- ① Δ=27°58'54"
R=130.00'
ChB=N54°34'47"E
ChD=62.86'
Arc=63.49'
- ② Δ=74°19'53"
R=7.00'
ChB=N31°24'18"E
ChD=8.46'
Arc=9.08'
- ③ N05°45'39"W 12.51'
- ④ S40°35'21"W 56.50'

John G. Kramer
18.194 Acres
O.R. 4868C01

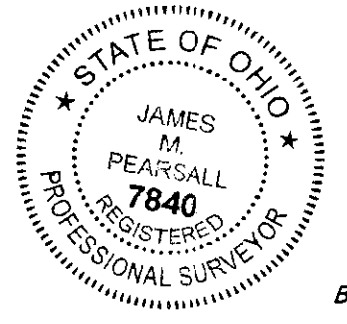
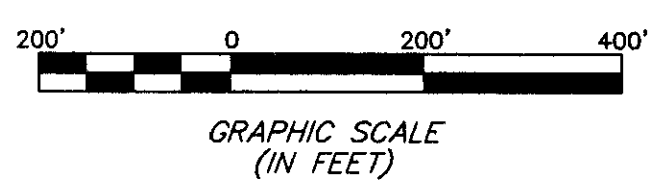
F.C.G.S. Mon.
No. 5228

Franklin County
Commissioners
4.4164 Ac.
O.R. 19678A01

F.C.G.S. Mon.
No. 8876

- = STONE FND.
 - = MON. FND.
 - = I.P. FND.
 - = I.P. SET
 - = MAG. NAIL FND.
 - = MAG. NAIL SET
 - ▲ = R.R. SPK. FND.
 - △ = R.R. SPK. SET
 - ◆ = P.K. NAIL FND.
- I.P. Set are 13/16" I.D. iron pipe with cap inscribed EMHT INC

BASIS OF BEARINGS: Bearings are based on the Ohio State Plane Coordinate System - South Zone NAD83. Control for bearings was derived from coordinates of monuments FCGS 8876 and FCGS 2221, having a bearing of North 88°53'20" East between them, as established by the Franklin County Engineering Department.



By *James M. Pearsall* 11/15/04
Professional Surveyor No. 7840

EMHT INC. ENGINEERS, SURVEYORS, PLANNERS, SCIENTISTS EVANS, MECHWART, HAMBLETON & TILTON, INC. 170 MILL STREET GAHANNA, OHIO 43230 TELEPHONE (614) 471-5150 FACSIMILE (614) 471-9286		Date: November 15, 2004
		Scale: 1" = 200'
		Job No: 2004-1732
		Sheet: 1 of 1
REVISIONS		
MARK	DATE	DESCRIPTION

I:\OHDATA1\PROJECT\20041732\DWG\41732BV3.DWG<41732BV3> - NO XREFS - PLOTTED BY: HKING - MONDAY, NOV 15 2004 - 1:11:01 PM