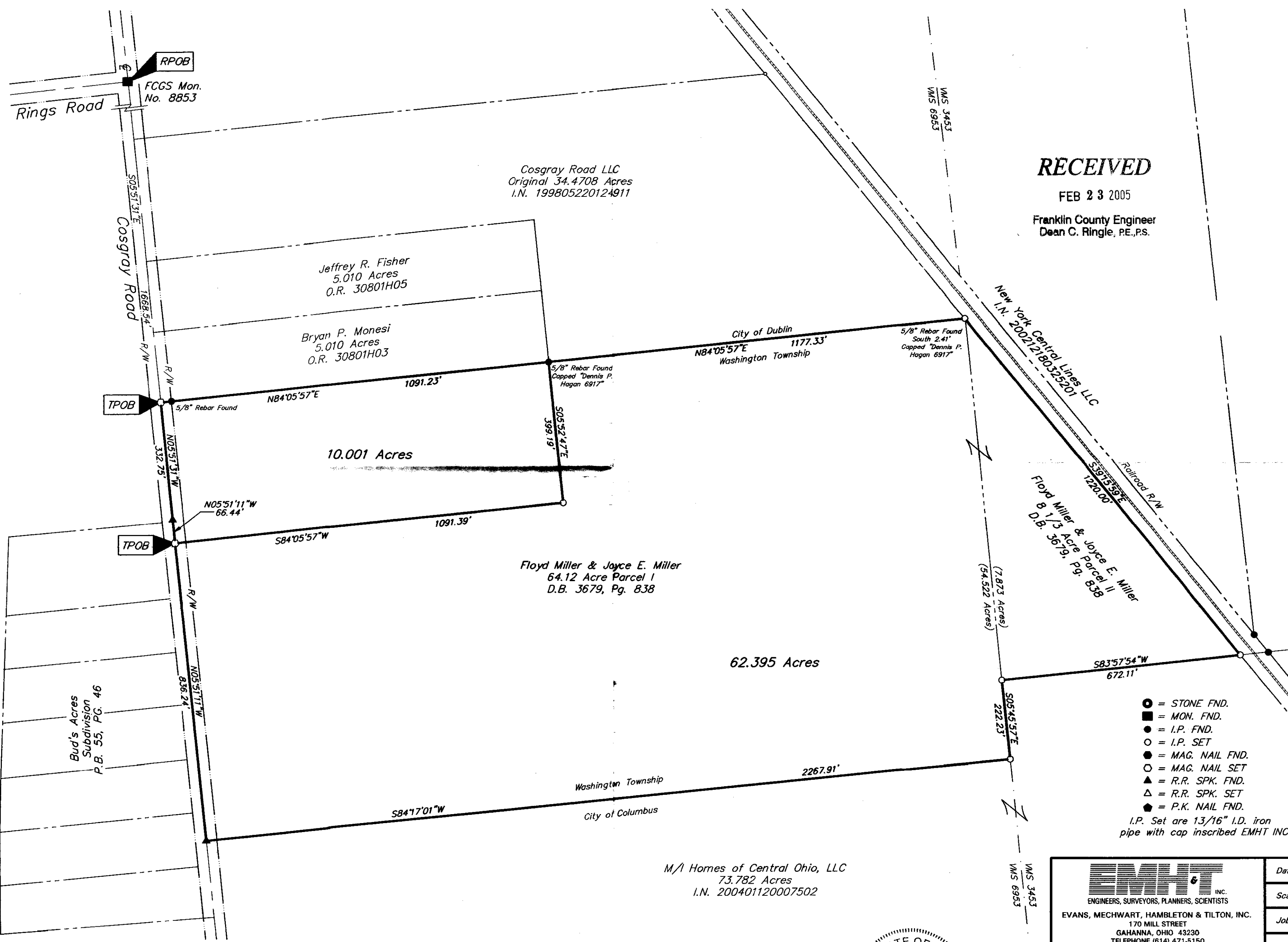


# SURVEY OF ACREAGE PARCEL

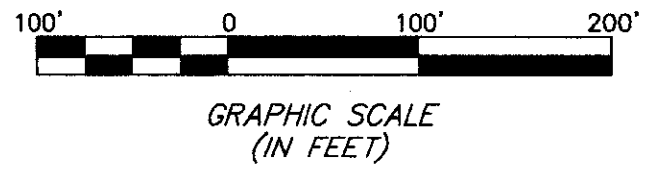
## VIRGINIA MILITARY SURVEY NO. 6953 & NO. 3453

### TOWNSHIP OF WASHINGTON, FRANKLIN COUNTY, OHIO



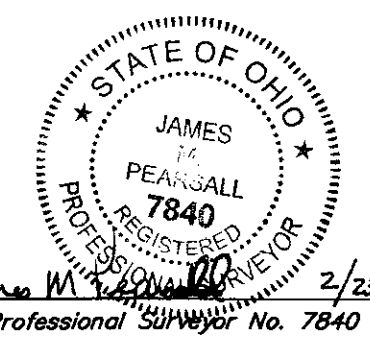
**RECEIVED**  
 FEB 23 2005  
 Franklin County Engineer  
 Dean C. Ringle, PE, PS.

- = STONE FND.
  - = MON. FND.
  - = I.P. FND.
  - = I.P. SET
  - = MAG. NAIL FND.
  - = MAG. NAIL SET
  - ▲ = R.R. SPK. FND.
  - △ = R.R. SPK. SET
  - ◆ = P.K. NAIL FND.
- I.P. Set are 13/16" I.D. iron pipe with cap inscribed EMHT INC



**BASIS OF BEARINGS:** Bearings are based on the Ohio State Plane Coordinate System as per NAD83. Control for bearings was from coordinates of monuments FCGA 8876 & FCGS 2221, having a bearing of North 88° 53' 20" East, established by the Franklin County Engineering Department, using Global Positioning System procedures and equipment.

M/I Homes of Central Ohio, LLC  
 73.782 Acres  
 I.N. 200401120007502



<b>EMHT</b> INC. ENGINEERS, SURVEYORS, PLANNERS, SCIENTISTS		Date: February 21, 2005
EVANS, MECHWART, HAMBLETON & TILTON, INC. 170 MILL STREET GAHANNA, OHIO 43230 TELEPHONE (614) 471-5150 FACSIMILE (614) 471-9286		Scale: 1" = 200'
		Job No: 2005-0343
		Sheet: 1 of 1
REVISIONS		
MARK	DATE	DESCRIPTION

I:\CADD\DATA\1\SURVEY\PROJECT\20050343\DWG\50343BV.DWG<LAYOUT2-18X24 LANDSCAPE> - NO XREFS - PLOTTED BY: H KING - MONDAY, FEB 21 2005 - 2:01:54 PM