



EVANS, MECHWART, HAMBLETON & TILTON, INC.  
170 MILL STREET, GAHANNA, OHIO 43230  
TELEPHONE (614) 471-5150 - FACSIMILE (614) 471-9286

**SURVEY OF ACREAGE PARCEL**  
**SECTION 24, TOWNSHIP 11, RANGE 21**  
**CONGRESS LANDS**

VILLAGE OF CANAL WINCHESTER, FRANKLIN COUNTY, OHIO

Date: January 14, 2004

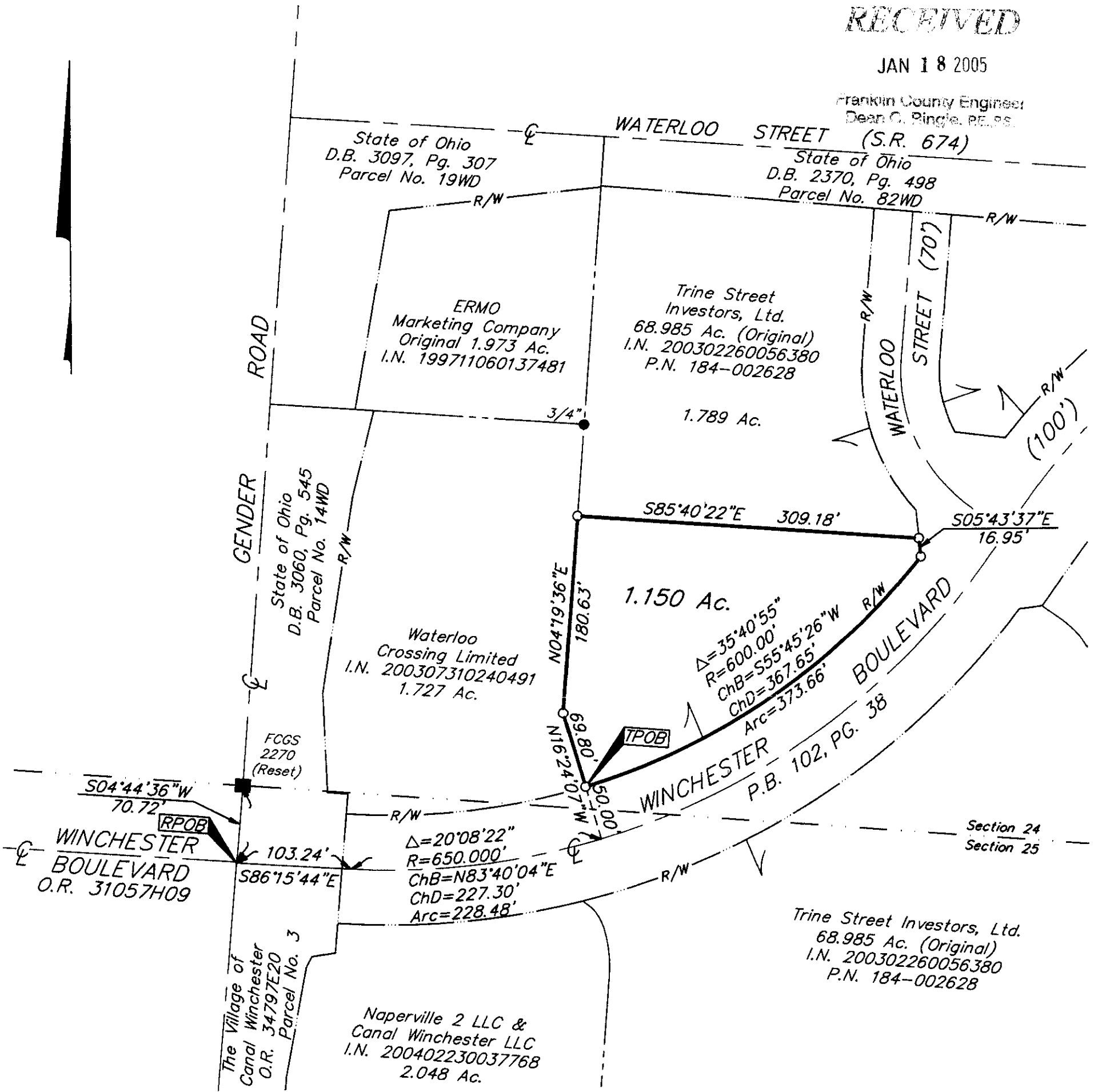
Scale: 1" = 100'

Job No: 2005-0091

RECEIVED

JAN 18 2005

Franklin County Engineer  
Dean C. Ringle, P.E., P.S.



Section 24  
Section 25

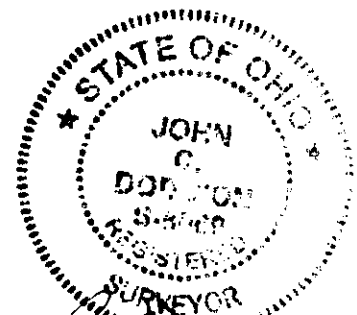
**BASIS OF BEARINGS:** Bearings are based on the Ohio State Plane Coordinate System per NAD83 (1986 adjustment). Control for bearings was from coordinates of monuments FCGS 2270 (Reset) & FCGS 4452, having a bearing of North 04° 44' 36" East, as established by the Franklin County Engineering Department.

- = STONE FND.
- = MON. FND.
- = I.P. FND.
- = I.P. SET
- = MAG. NAIL FND.
- = MAG. NAIL SET
- ▲ = R.R. SPK. FND.
- △ = R.R. SPK. SET
- ◆ = P.K. NAIL FND.

I.P. Set are 13/16" I.D. iron pipe with cap inscribed EMHT INC



GRAPHIC SCALE  
(IN FEET)



By *John C. Dodson*  
Professional Surveyor No. 8069

01/14/05