



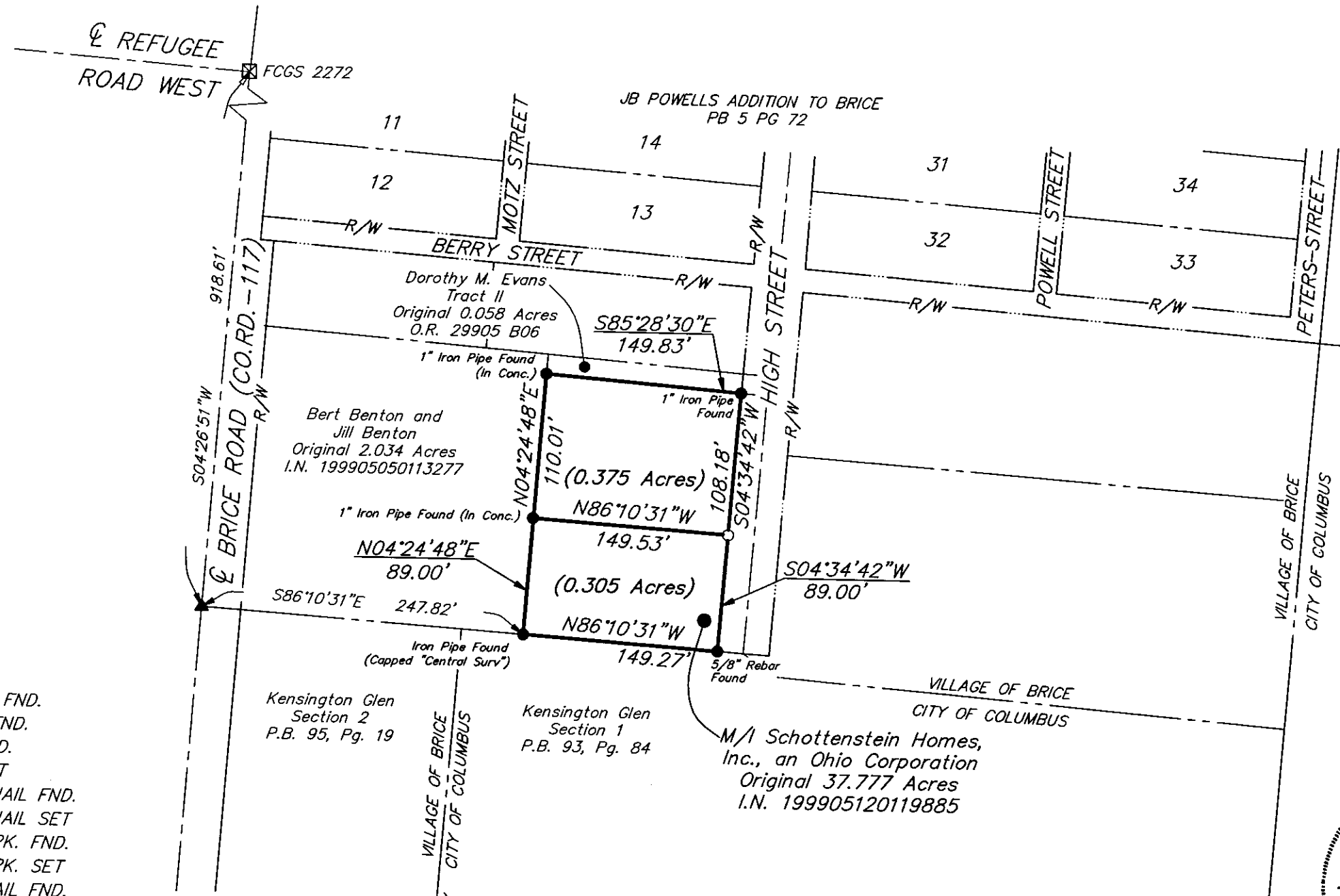
EVANS, MECHWART, HAMBLETON & TILTON, INC.  
170 MILL STREET, GAHANNA, OHIO 43230  
TELEPHONE (614) 471-5150 - FACSIMILE (614) 471-9286

**SURVEY OF ACREAGE PARCEL**  
HALF SECTION 44, SECTION 25  
TOWNSHIP 12 NORTH, RANGE 21 WEST  
UNITED STATES MILITARY LANDS  
VILLAGE OF BRICE, FRANKLIN COUNTY, OHIO

Date: October 21, 2004

Scale: 1" = 100'

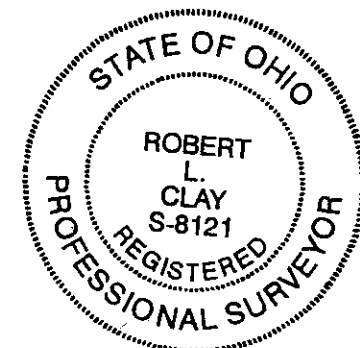
Job No: 2004-1765



RECEIVED

OCT 25 2004

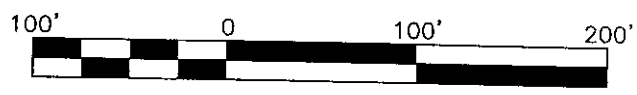
Franklin County Engineer  
Dean C. Ringle, P.E., P.S.



- = STONE FND.
- = MON. FND.
- = I.P. FND.
- = I.P. SET
- = MAG. NAIL FND.
- = MAG. NAIL SET
- ▲ = R.R. SPK. FND.
- △ = R.R. SPK. SET
- ◆ = P.K. NAIL FND.

I.P. Set are 13/16" I.D. iron pipe with cap inscribed EMHT INC

**BASIS OF BEARINGS:** The basis of bearing for this drawing is North 4°26'51" East for the centerline of Brice Road between Franklin County Geodetic Survey Monument Numbers 9918 & 2272 as shown on a Franklin County Engineer's Office Centerline Survey Plat (Drawing No. 0117-03).



GRAPHIC SCALE  
(IN FEET)

By Robert L. Clay October 25, 2004  
Professional Surveyor No. 8121

I:\COMDATA\1\SURVEY\PROJECT\2004\1765\DWG\41765B\DWG-11X17.LAND\_HPS0002 - NO. XREES - PLOTTED BY: JPOMELL - THURSDAY, OCT 21 2004 - 9:19:02 AM