



ENGINEERS, SURVEYORS, PLANNERS, SCIENTISTS

EVANS, MECHWART, HAMBLETON & TILTON, INC.
170 MILL STREET, GAHANNA, OHIO 43230
TELEPHONE (614) 471-5150 - FACSIMILE (614) 471-9286

SURVEY OF ACREAGE PARCEL

QUARTER TOWNSHIP 4, TOWNSHIP 1, RANGE 16

UNITED STATES MILITARY LANDS

CITY OF COLUMBUS, FRANKLIN COUNTY, OHIO

Date: November 11, 2004

Scale: 1" = 120'

Job No: 2004-0241

Meijer Stores Limited Partnership
I.N. 200008280172473
Original 34.259

Target Corporation
11.544 Acres
I.N. 200410210243888

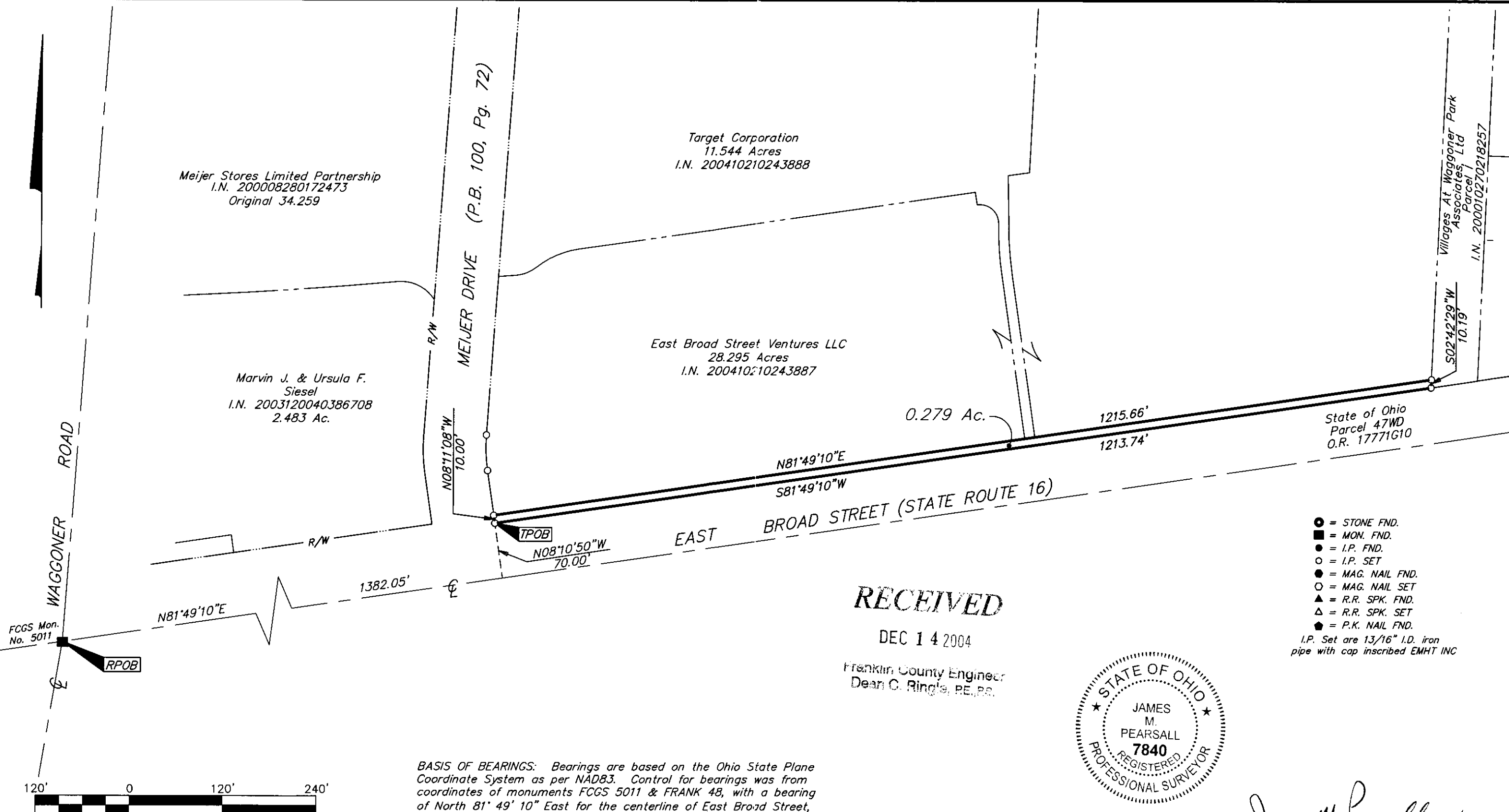
East Broad Street Ventures LLC
28.295 Acres
I.N. 200410210243887

Marvin J. & Ursula F.
Siesel
I.N. 2003120040386708
2.483 Ac.

0.279 Ac.

State of Ohio
Parcel 47WD
O.R. 17771G10

Villages At Waggoner Park
Associates, Ltd
Parcel 1
I.N. 200010270218257

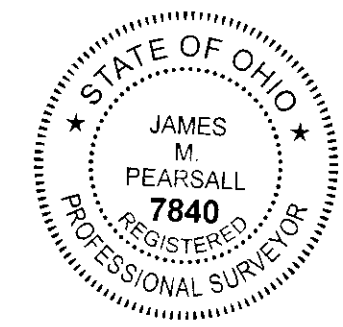


- = STONE FND.
 - = MON. FND.
 - = I.P. FND.
 - = I.P. SET
 - = MAG. NAIL FND.
 - = MAG. NAIL SET
 - ▲ = R.R. SPK. FND.
 - △ = R.R. SPK. SET
 - ◆ = P.K. NAIL FND.
- I.P. Set are 13/16" I.D. iron pipe with cap inscribed EMHT INC

RECEIVED

DEC 14 2004

Franklin County Engineer
Dean C. Ringle, PE, PS.



By James M. Pearsall 11/11/04
Professional Surveyor No. 7840

BASIS OF BEARINGS: Bearings are based on the Ohio State Plane Coordinate System as per NAD83. Control for bearings was from coordinates of monuments FCGS 5011 & FRANK 48, with a bearing of North 81° 49' 10" East for the centerline of East Broad Street, established by the Franklin County Engineering Department, using Global Positioning System procedures and equipment.



GRAPHIC SCALE
(IN FEET)

\\GMP\DATA\1\SURVEY\PROJECT\20040241\DWG\40241EVDWG-11X17 LAND HP50000 - NO XREFS - PLOTTED BY: HXING - THURSDAY, NOV 11, 2004 - 11:02:59 AM