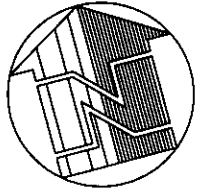


SURVEY MAP OF 0.099 ACRES



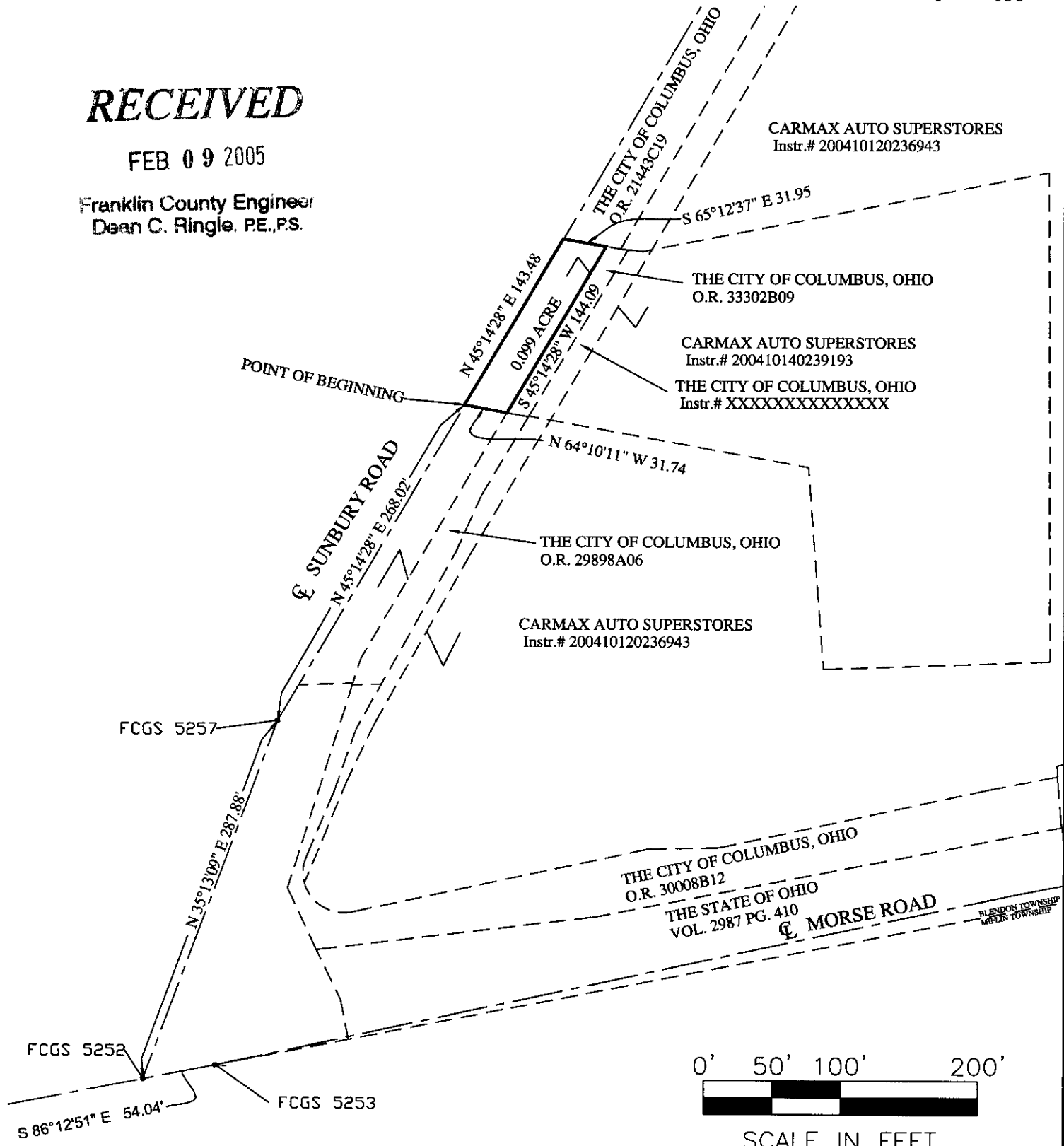
Situated in the State of Ohio, County of Franklin, City of Columbus, Quarter Township 3,
Township 2, Range 17, United States Military Lands.

1" = 100'

RECEIVED

FEB 09 2005

Franklin County Engineer
Dean C. Ringle, PE., P.S.



BASIS OF BEARINGS: Bearings are based on a bearing of S 86°12'51" E between Franklin County Monuments FCGS 5252 and FCGS 5253 as shown on Centerline Survey Plat FRA-MORSE RD. of record in Plat Book 82 Page 27, Franklin County Records.



RESOURCE INTERNATIONAL INC.
6350 PRESIDENTIAL GATEWAY
COLUMBUS, OHIO 43231
(614) 823-4949

I hereby state that the above map was prepared from record information and field measurements conducted by Resource International, Inc. in January of 2003 and August of 2004.



Mark S. Ward
Mark S. Ward
P.S. S-7514
DATE
2-2-05