



EVANS, MECHWART, HAMBLETON & TILTON, INC.
170 MILL STREET, GAHANNA, OHIO 43230
TELEPHONE (614) 471-5150 - FACSIMILE (614) 471-9286

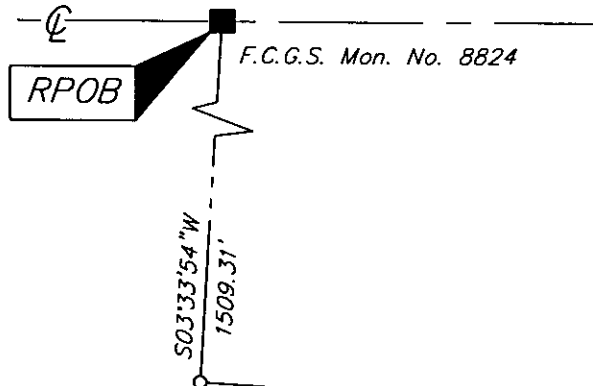
SURVEY OF ACREAGE PARCEL
SECTION 15, QUARTER TOWNSHIP 2, TOWNSHIP 2, RANGE 16
UNITED STATES MILITARY LANDS
CITY OF COLUMBUS, FRANKLIN COUNTY, OHIO

Date: September 29, 2004

Scale: 1" = 60'

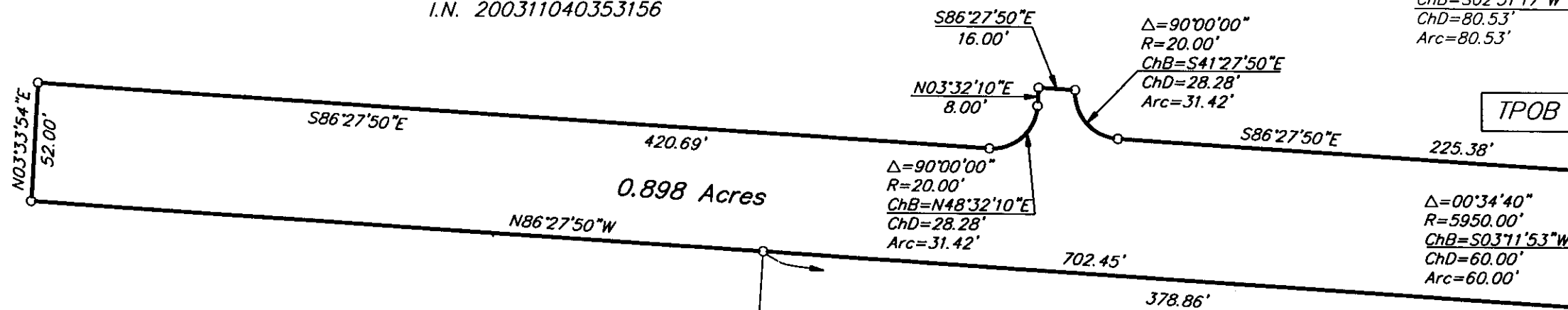
Job No: 2004-0480

Central College Road



Townsend Construction Company,
an Ohio corporation
Remainder 24.416 Acres
I.N. 200311040353155

Dominion Homes, Inc.
60.492 Acres
I.N. 200311040353156



- = STONE FND.
- = MON. FND.
- = I.P. FND.
- = I.P. SET
- = MAG. NAIL FND.
- = MAG. NAIL SET
- ▲ = R.R. SPK. FND.
- △ = R.R. SPK. SET
- = P.K. NAIL FND.

I.P. Set are 13/16" I.D. iron pipe with cap inscribed EMHT INC



GRAPHIC SCALE
(IN FEET)

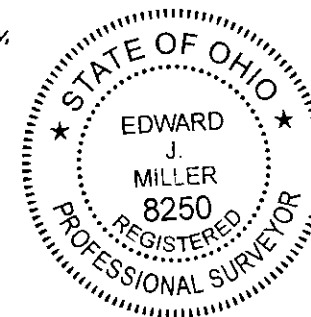
BASIS OF BEARINGS: Bearings are based on the Ohio State Plane Coordinate System as per NAD83. Control for bearings was from monuments 8824 & 8825, having a bearing of North 86° 29' 28" West, established by the Franklin County Engineering Department, using Global Positioning System procedures and equipment.


Townsend Construction Company,
an Ohio corporation
Remainder 24.416 Acres
I.N. 200311040353155

RECEIVED

DEC 22 2004

Franklin County Engineer
Dear C. Ringle, PE, PS.



By  10/1/04
Professional Surveyor No. 8250

I:\CH\DATA\1\SURVEY\1\PROJECT\2004\0480\DWG\40480RW.DWG - PLOTTED BY: BSMITH - WEDNESDAY, SEP 29, 2004 - 3:01:54 PM