

SURVEY OF ACREAGE PARCEL
SECTION 4, QUARTER TOWNSHIP 2, TOWNSHIP 2, RANGE 16
UNITED STATES MILITARY LANDS
TOWNSHIP OF PLAIN, FRANKLIN COUNTY, OHIO

Date: December 13, 2004

Scale: 1" = 100'

Job No: 2004-2221

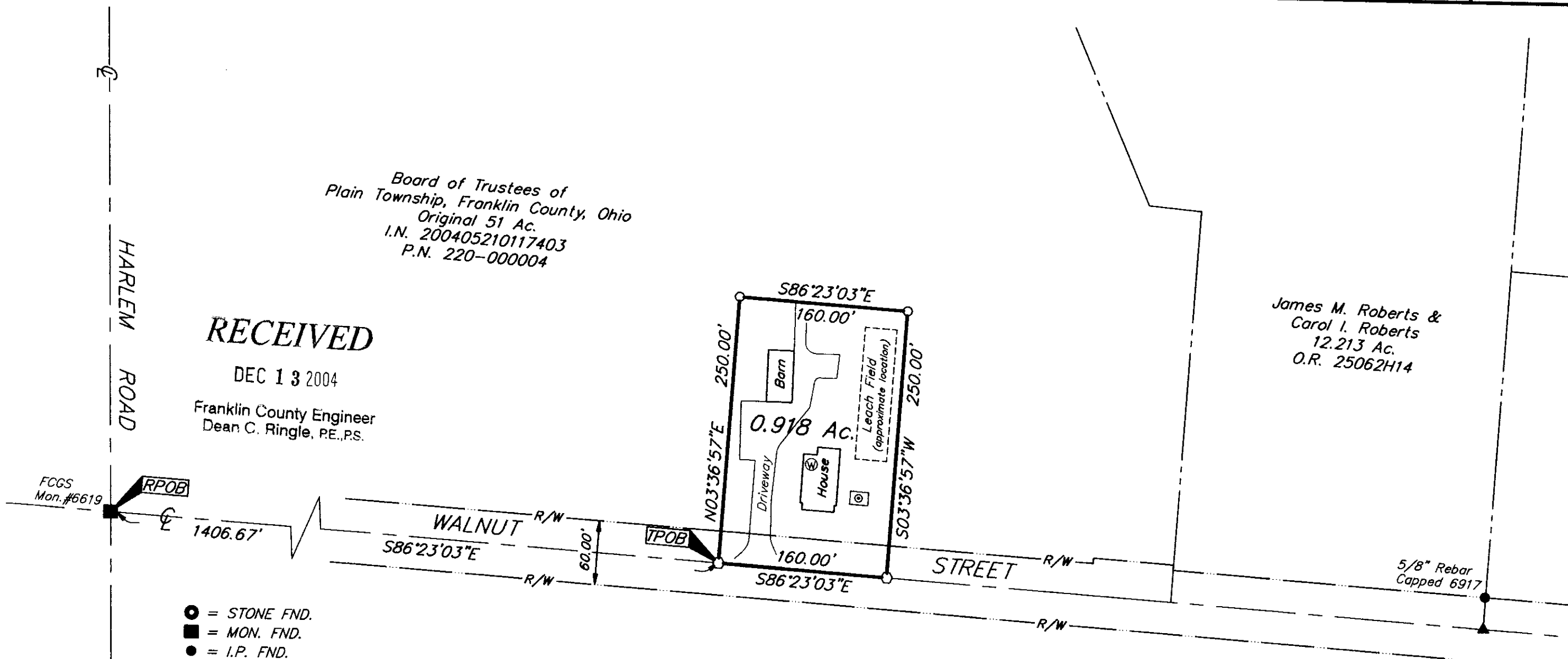
RECEIVED

DEC 13 2004

Franklin County Engineer
Dean C. Ringle, P.E., P.S.

Board of Trustees of
Plain Township, Franklin County, Ohio
Original 51 Ac.
I.N. 200405210117403
P.N. 220-000004

James M. Roberts &
Carol I. Roberts
12.213 Ac.
O.R. 25062H14



- = STONE FND.
- = MON. FND.
- = I.P. FND.
- = I.P. SET
- = MAG. NAIL FND.
- = MAG. NAIL SET
- ▲ = R.R. SPK. FND.
- △ = R.R. SPK. SET
- ◆ = P.K. NAIL FND.

I.P. Set are 13/16" I.D. iron pipe with cap inscribed EMHT INC



GRAPHIC SCALE
(IN FEET)

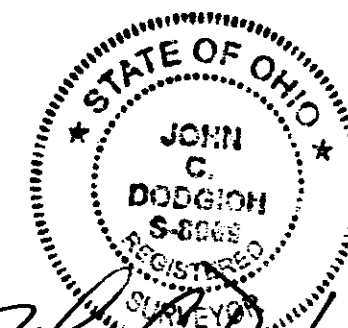
Note:

Water Well under porch. Septic Tank and Leach Field shown are based on a Plain Township Trustee's knowledge of location.

UTILITY LEGEND

- ⊙ = Water Well (approximate location)
- ⊕ = Septic Tank (approximate location)

BASIS OF BEARINGS: Bearings are based on South 86° 14' 20" East, for the centerline of Walnut Street as shown in Plat Book 102, Page 11 (Upper Albany Section 2).



By *John C. Dodgion*
Professional Surveyor No. 8069

12/13/04

L:\COMPUTER\PROJECTS\2004\2221\DWG\42221R\DWG-STIXT.LAND HP5000 - NO XREFS - PLOTTED BY: BUSHBY - MONDAY, DEC 13 2004 - 6:55:24 AM