

# MS CONSULTANTS, INC.

(614) 898-7100

2221 SCHROCK ROAD, COLUMBUS, OH 43229

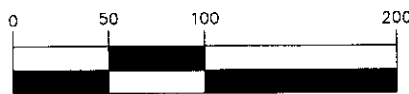
FAX (614) 898-7570

SITUATED IN THE STATE OF OHIO, COUNTY OF FRANKLIN, CITY OF COLUMBUS, IN HALF SECTION 27, TOWNSHIP 5, RANGE 22, REFUGEE LANDS, BEING A 2.882 ACRE TRACT OF LAND ALL OUT OF THAT 6.729 ACRE TRACT AS DESCRIBED IN A DEED TO LIBERTY PLACE, LLC, OF RECORD IN INSTRUMENT NUMBER 200111060267193, ON FILE IN THE RECORDER'S OFFICE, FRANKLIN COUNTY, OHIO.

**RECEIVED**

OCT 14 2004

GRAPHIC SCALE



1 inch = 100 ft.

Franklin County Engineer  
DUBLTON STREET (49.5')

**LEGEND**

- IRON PIN FOUND  
REFERENCE AS PER CAP  
AND TYPE NOTED ON SURVEY
- IRON PIN SET- 5/8" REBAR  
30" LONG WITH YELLOW CAP  
STAMPED "MS CONS, COLUM"
- DRILL HOLE FOUND
- ▲ RAILROAD SPIKE SET
- ⊗ COTTON GIN SPINDLE  
SPIKE SET
- △ RAILROAD SPIKE FOUND

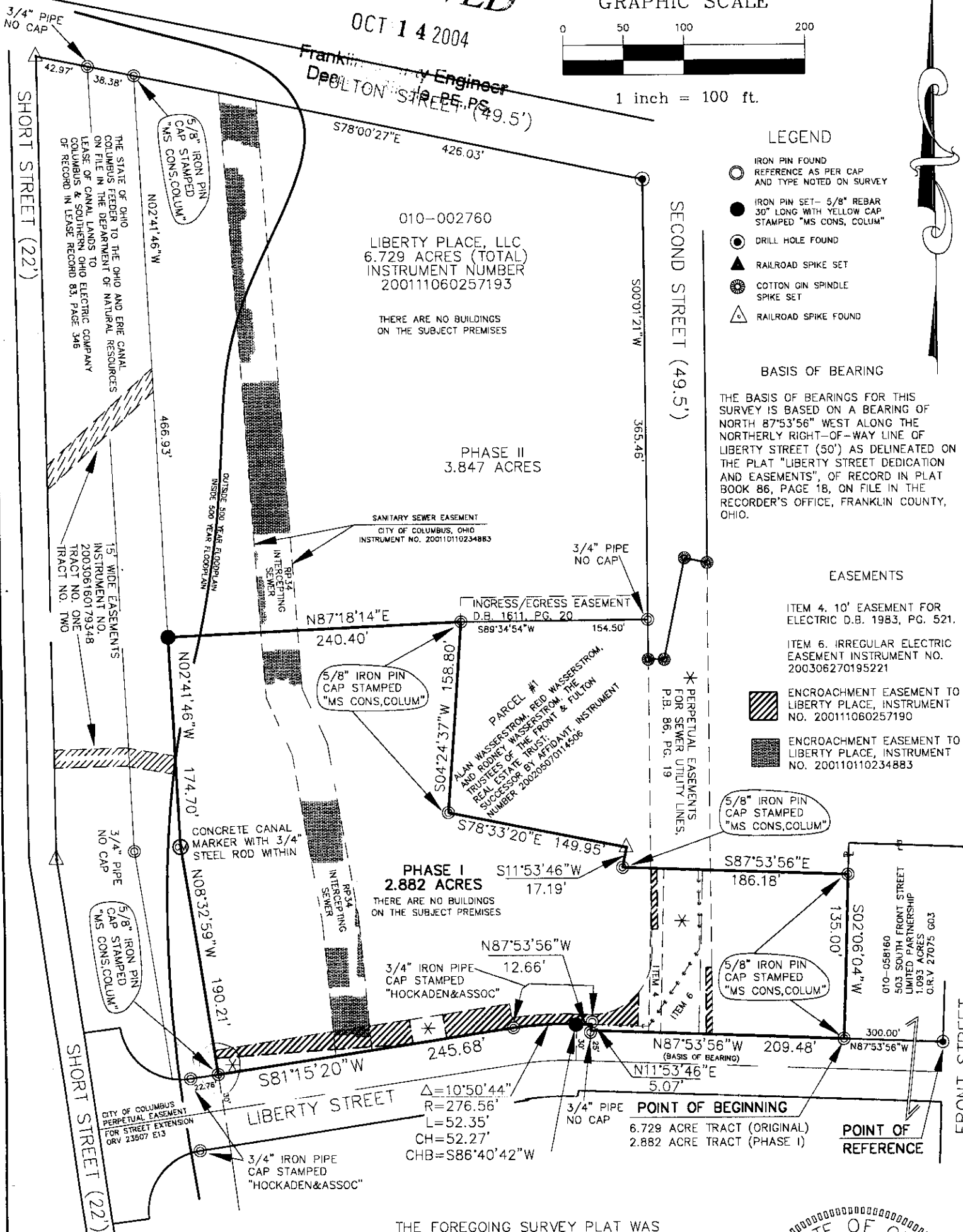
**BASIS OF BEARING**

THE BASIS OF BEARINGS FOR THIS SURVEY IS BASED ON A BEARING OF NORTH 87°53'56" WEST ALONG THE NORTHERLY RIGHT-OF-WAY LINE OF LIBERTY STREET (50') AS DELINEATED ON THE PLAT "LIBERTY STREET DEDICATION AND EASEMENTS", OF RECORD IN PLAT BOOK 86, PAGE 18, ON FILE IN THE RECORDER'S OFFICE, FRANKLIN COUNTY, OHIO.

**EASEMENTS**

- ITEM 4. 10' EASEMENT FOR ELECTRIC D.B. 1983, PG. 521.
- ITEM 6. IRREGULAR ELECTRIC EASEMENT INSTRUMENT NO. 200306270195221

- ENCROACHMENT EASEMENT TO LIBERTY PLACE, INSTRUMENT NO. 200111060257190
- ENCROACHMENT EASEMENT TO LIBERTY PLACE, INSTRUMENT NO. 200110110234883



THE FOREGOING SURVEY PLAT WAS PREPARED FROM AN ACTUAL FIELD SURVEY OF THE PREMISES IN SEPTEMBER, 2000 AND OCTOBER, 2004, BY MS CONSULTANTS, INC., UNDER THE DIRECT SUPERVISION OF JOHN L. PRICE, REGISTERED PROFESSIONAL SURVEYOR NO. 7159. IRON PINS REFERENCED TO BE SET ARE 5/8" REBAR, 30" LONG WITH A YELLOW PLASTIC CAP STAMPED "MS CONS-COLUM".

*John L. Price*  
JOHN L. PRICE  
10/14/04  
PROFESSIONAL SURVEYOR NO. 7159

