

\\CMHDATA1\SURVEY\PROJECT\20050793\DWG\50793BV1.DWG<LEGAL LAND> - NO XREFS - PLOTTED BY: J.POWELL - SUNDAY, MAY 1 2005 - 11:24:36 AM



ENGINEERS, SURVEYORS, PLANNERS, SCIENTISTS  
EVANS, MECHWART, HAMBLETON & TILTON, INC.  
170 MILL STREET, GAHANNA, OHIO 43230  
TELEPHONE (614) 471-5150 - FACSIMILE (614) 471-9286

# SURVEY OF ACREAGE PARCEL

## QUARTER TOWNSHIP 2, TOWNSHIP 1, RANGE 18

### UNITED STATES MILITARY LANDS

#### CITY OF COLUMBUS, FRANKLIN COUNTY, OHIO

Date: May 2, 2005

Scale: 1" = 30'

Job No: 2005-0793

Downtown Clark LLC,  
an Ohio limited liability company  
2.334 Acres  
I.N. 200312310405862

○ = I.P. SET  
I.P. Set are 13/16" I.D. iron  
pipe with cap inscribed EMHT INC

# RECEIVED

MAY 12 2005

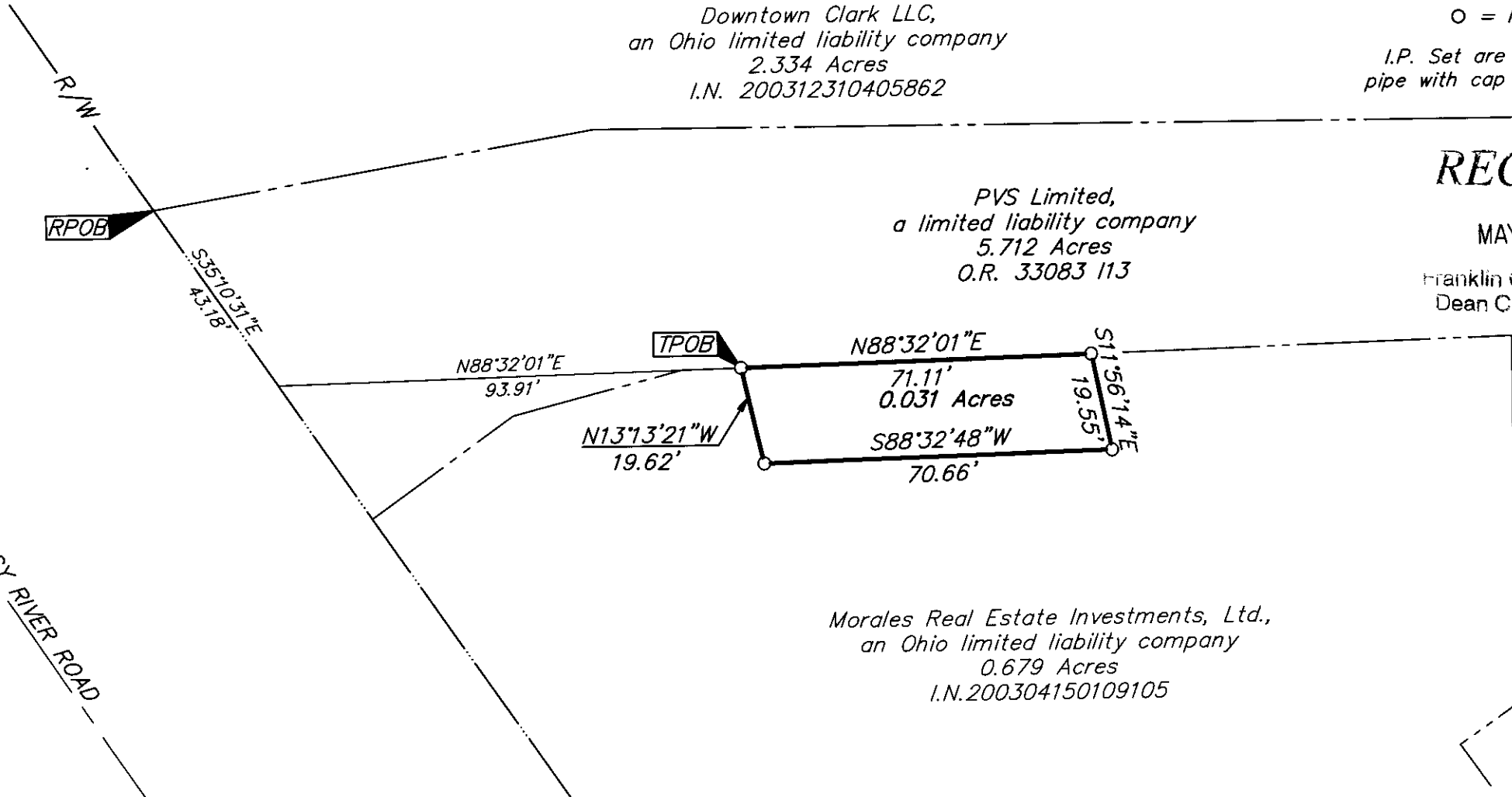
Franklin County Engineer  
Dean C. Ringle P.E., P.S.

PVS Limited,  
a limited liability company  
5.712 Acres  
O.R. 33083 113

Morales Real Estate Investments, Ltd.,  
an Ohio limited liability company  
0.679 Acres  
I.N.200304150109105

RPOB

TPOB



GRAPHIC SCALE  
(IN FEET)

**BASIS OF BEARINGS:** Bearings are based on the north line of a 5.712 acre tract of land conveyed in Official Record 33083 113 being South 89° 56' 00" East and are used to denote angles only.



By James M. Pearsall 5/12/05  
Professional Surveyor No. 7840